



**29 High Street, Hanslope, Milton Keynes,
Buckinghamshire, MK19 7LQ**

£269,950 Freehold

- Three bedroom
- End terrace victorian house
- Two reception rooms
- Single garage
- Highly desirable village of Hanslope
- Off road parking for four vehicles
- Feature fireplace
- Private rear garden
- Roll top bath
- EPC Rating TBC





GROUND FLOOR

Entrance Hall

Doors leading to:

Lounge

4.42m x 3.15m (14' 6" x 10' 4")

Dining Room

3.07m x 3.04m (10' 1" x 10' 0")

Kitchen Breakfast Room

4.19m x 3.69m (13' 9" x 12' 1")

FIRST FLOOR

Landing

Doors leading to:

Bedroom One

2.34m x 2.02m (7' 8" x 6' 8") into 2.89m x 2.70m (9' 6" x 8' 10")

Bedroom Two

3.37m x 2.41m (11' 1" x 7' 11")

Bedroom Three

2.47m x 2.31m (8' 1" x 7' 7")

Family Bathroom

Fitted to comprise three piece suite

EXTERIOR

Rear and Front Garden

Single Wooden Garage

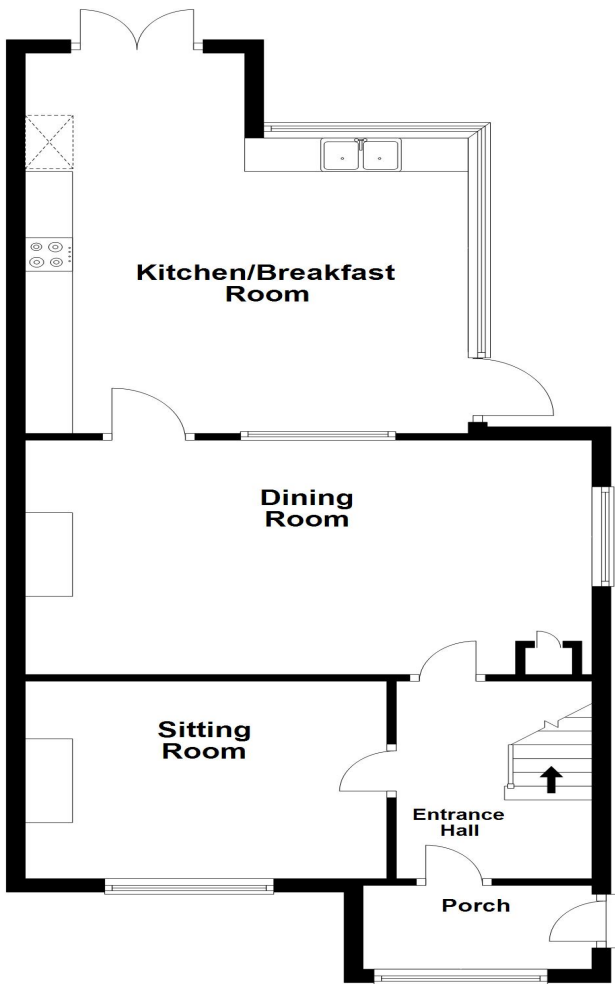
Off Road Parking

Space for four vehicles

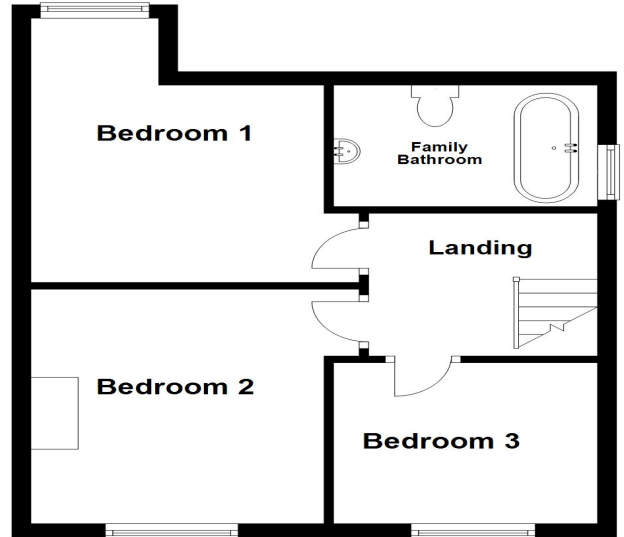
Disclaimer

Whilst we have endeavoured to prepare our sales particulars accurately none of the services, appliances or equipment have been tested. A buyer should satisfy themselves on such matters prior to purchase. Any measurements or distances mentioned in these particulars are for guide reference only. If such particulars are fundamental to a purchase, buyers should rely on their own enquiries. All enquiries should be directed to Elevation Estate Agents in the first instance.

Ground Floor



First Floor



elevation estate agents
Plan produced using PlanUp.