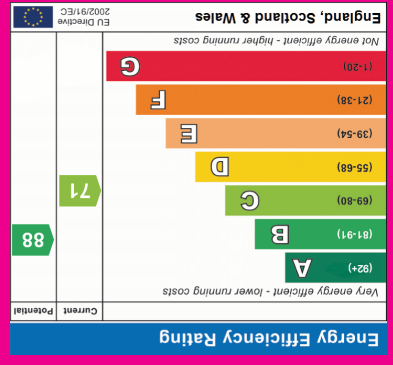
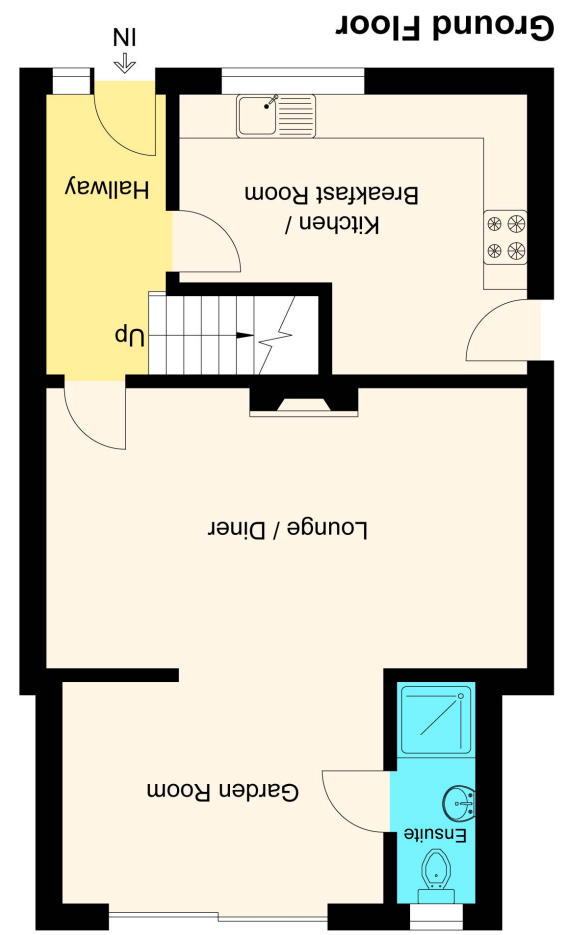
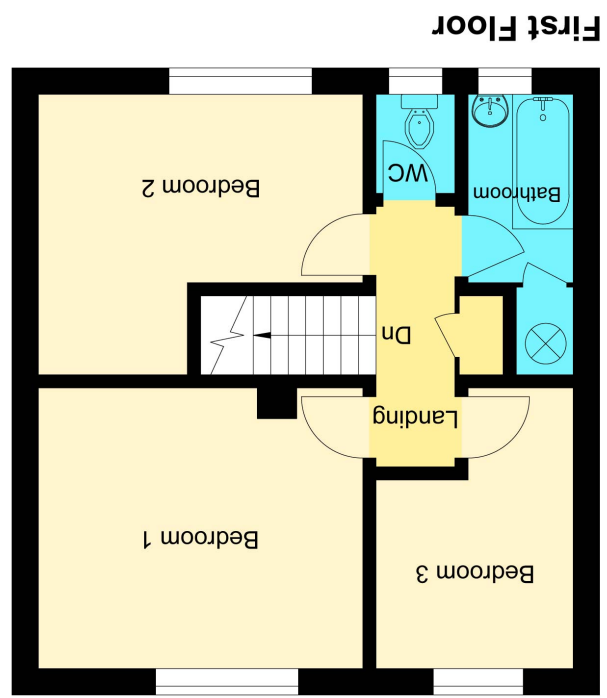


Approximate Gross Internal Floor Area : 88.70 sq m / 954.75 sq ft
Illustration for identification purposes only, measurements are approximate, not to scale.



191 Telford Avenue, Stevenage, Hertfordshire SG2 0AW

£325,000 Freehold

Tel: 01438 367753

www.own-homes.com

Email: sales@own-homes.com



Description

GUIDE PRICE £325,000-£350,000



CHAIN FREE and beautifully extended to the rear, this charming 3-bedroom terraced house offers spacious and versatile living in a sought-after location, fronting onto peaceful greenland. Perfect for families or professionals seeking a blend of comfort and convenience, this home boasts a generous size lounge/diner, a modern kitchen/breakfast room, and a downstairs shower room, making everyday living effortless. With two bathrooms and a mindful layout, this property is ready to welcome its new owners without delay.

On entering the home, you are greeted by a light and airy hallway leading into the generous lounge and dining area. This spacious room is perfect for both relaxing evenings and entertaining guests. The large windows allow an abundance of natural light, enhancing the welcoming and homely atmosphere. Adjacent to the lounge is the kitchen/breakfast room, thoughtfully extended to maximize space and functionality. Here, you will find ample work surfaces, modern cabinetry, and space for casual dining, creating the heart of the home where family and friends can easily gather.



Complementing the ground floor is a practical downstairs shower room, ideal for busy mornings and for use by guests, adding convenience and enhancing the property's appeal. Upstairs, the three well-proportioned bedrooms offer flexible accommodation. The master bedroom benefits from its peaceful outlook over the greenland, while the additional bedrooms can comfortably serve as children's rooms, guest rooms, or a home office.

The family bathroom completes the first floor and is fitted with contemporary fixtures and provides a relaxing space to unwind. The property's charming terraced frontage overlooks lush greenland, creating a serene and picturesque setting that enhances the overall character of the home.



This terraced house is a fantastic opportunity to acquire a move-in ready home in a highly desirable location. The rear extension, multiple bathrooms, and generous living space make it a perfect choice for those looking for comfort, practicality, and a touch of character. Being offered CHAIN FREE adds to the convenience, enabling a smooth and quick purchase process. Don't miss the chance to view this inviting family home.

