

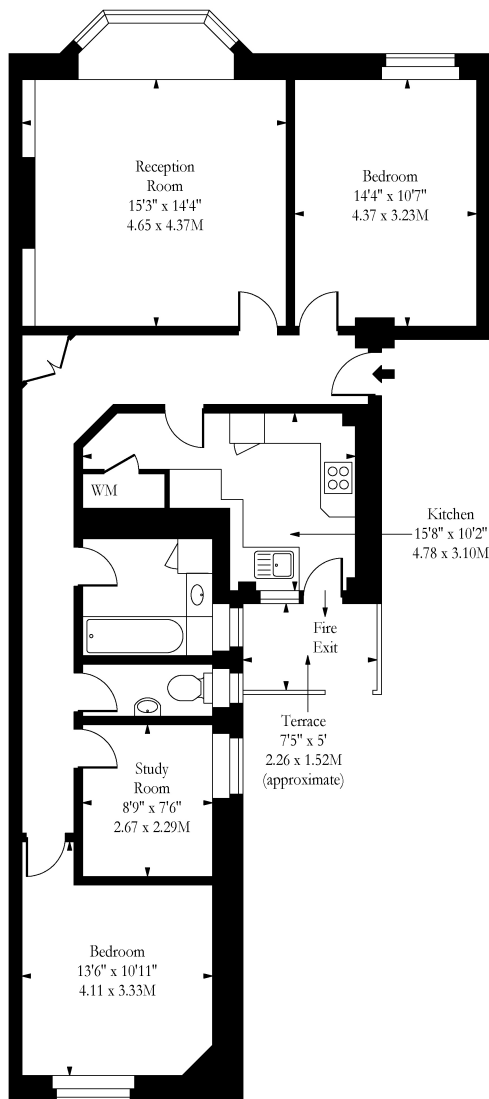


Queens Court, West End Lane, London, NW6

£2,600 pcm

- Two Double Bedroom
- Office room
- Furnished
- Bright & Airy Throughout
- Available 5th December 2023

Queens Court, NW6



Second Floor

Approx Gross Internal Area 982 Sq Ft - 91.23 Sq M

Measured in accordance with RICS guidelines. Every attempt is made to ensure accuracy

However all measurements are approximate.

The floor plan is illustrative purposes only and is not to scale

www.tomekphotography.co.uk

