



Apartment 6, Athol House, Marine Parade, Peel, Isle of Man. IM5 1PB

This one-bedroom apartment is the perfect combination of style, comfort, and convenience, making it an ideal choice for those looking for a fantastic apartment in Peel.



£149,950 Leasehold

PROPERTY DESCRIPTION

Manxmove Estate Agents is proud to present this lovely one-bedroom apartment for sale on Peel Promenade.

This well-presented apartment boasts a modern and stylish interior with high-quality finishes throughout. The open-plan living space is bright and spacious, offering plenty of room for relaxing and entertaining. The kitchen is sleek and contemporary, featuring modern appliances and ample storage space.

The bedroom is complimented by soft carpeting, built-in wardrobes, and large windows that flood the room with natural light. The shower room is finished with a modern suite including double width shower.

Located on Peel Promenade, this apartment offers stunning sea views once you step outside of the building and easy access to the beautiful beachfront. Due to the properties location you can find a variety of amenities, shops, and restaurants nearby to enjoy.

TENURE Leasehold with active management company in place, charges are set at £800 per annum if paid up front.

RATES Approximately £600 per annum

FEATURES

- Spacious One Bedroom Apartment
- Situated on Peel Promenade
- Ideal for First Time Buyers and Investors
- Open Plan Kitchen/Lounge/Diner
- Bedroom plus Modern Shower Room
- Well Run Management Company
- Plenty of Public Parking to Front
- No Onward Chain

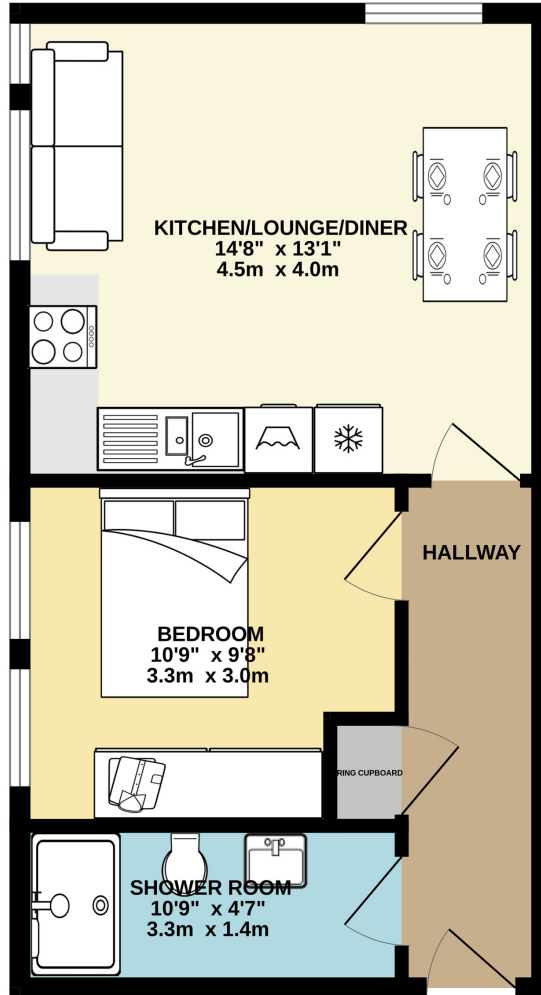


Property Images



FLOORPLAN

GROUND FLOOR
401 sq.ft. (37.3 sq.m.) approx.



TOTAL FLOOR AREA : 401 sq.ft. (37.3 sq.m.) approx.

Whilst every attempt has been made to ensure the accuracy of the floorplan contained here, measurements of doors, windows, rooms and any other items are approximate and no responsibility is taken for any error, omission or mis-statement. This plan is for illustrative purposes only and should be used as such by any prospective purchaser. The services, systems and appliances shown have not been tested and no guarantee as to their operability or efficiency can be given.
Made with Metropix ©2024

DISCLAIMER: Whilst Manxmove Ltd believe that these details are correct, neither Manxmove Ltd or their clients guarantee their accuracy in any way. Consequently, these details are not to be used to form part of any legally binding contract. Prospective purchasers or tenants are advised to visit this property to satisfy themselves as to the correctness of these details. Please note, we use wide angle camera lenses in order to show as much of each room as possible. This is not intended to mislead any prospective purchasers or tenants in any way and an honest verbal description is always available prior to viewing if required.