



THE ESTATE AGENTS  
1977



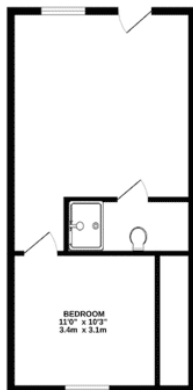


# Kingsley Gardens, Northampton NN2 7BW £500,000 - Freehold

GROUND FLOOR  
369 sq. ft. (34.1 sq.m.) approx.



1ST FLOOR  
369 sq. ft. (34.1 sq.m.) approx.



2ND FLOOR  
369 sq. ft. (34.1 sq.m.) approx.



3RD FLOOR  
302 sq. ft. (28.1 sq.m.) approx.



TOTAL FLOOR AREA : 1469 sq. ft. (136.5 sq.m.) approx.

## PROPERTY DESCRIPTION

Estate agents are pleased to introduce Kingsley Gardens—a prime investment opportunity featuring a block of three flats.

This development comprises three well-designed apartments, each offering comfortable living spaces and modern amenities. Situated in a desirable location, Kingsley Gardens promises strong rental yields and potential for capital appreciation, making it an ideal addition to any property portfolio.

Perfectly blending modern style with practical living, this exclusive residence features two spacious 1-bedroom flats and a luxurious 2-bedroom duplex.

Nestled in a sought-after location, this development provides access to landscaped communal gardens.

Property Highlights Two 1-Bedroom Flats and a two bedroom duplex:

1 bedroom Basement Flat - features a spacious open-plan kitchen and living area, leading to a comfortable double bedroom and a modern bathroom. Double doors open directly onto a private garden, providing a serene outdoor space and serving as a convenient entrance and enhancing indoor-outdoor flow.

1 bedroom Ground floor Flat - welcomes with stylish open-plan living and dining areas. Contemporary kitchen fitted with high-quality appliances. Generous double bedroom with ample natural light. Sleek, modern bathroom.

2 Bedroom Duplex - spacious layout spread over two floors for added privacy. Large open-plan living and fully equipped kitchen and modern bathroom. Two well-appointed bedrooms, including a master en-suite.

Additional Features Access to beautifully maintained communal gardens – perfect for relaxation or entertaining.

High-specification interiors with premium finishes throughout. Convenient location close to local amenities, transport links, and green spaces.

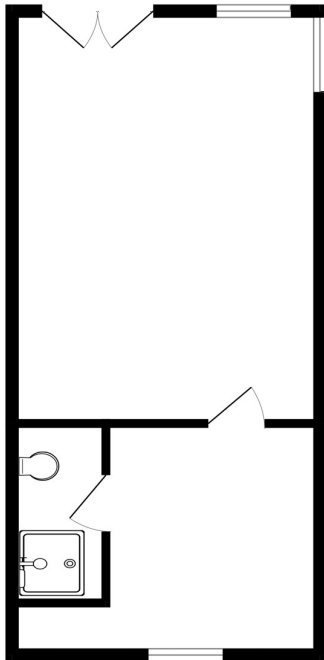
Kingsley Gardens offers a fantastic opportunity for homeowners and investors alike. Whether you're seeking a stylish new home or a lucrative investment property, these flats and duplex are designed to exceed expectations.

Arrange a viewing today to experience the charm and sophistication of Kingsley Garden

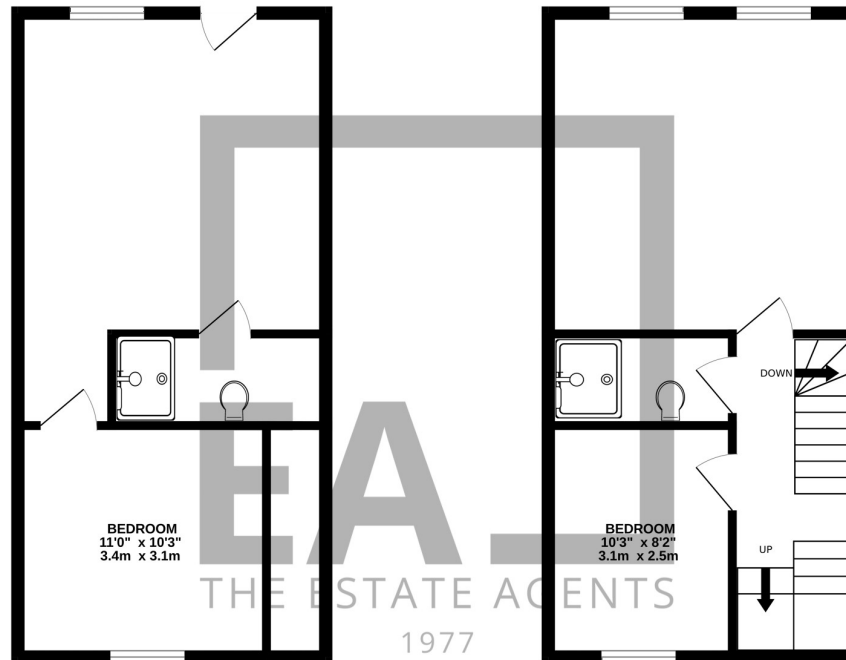
## POINTS OF INTEREST

- Stunning New Development Of Three Individual Apartments.
- 1 Bedroom Basement Flat
- 1 Bedroom Ground Floor Flat
- 2 Bedroom Duplex Apartment With En-Suite
- Spacious Open-Plan Living Areas:
- Modern Bathrooms
- Private Garden Access
- Desirable Location
- Turn Key Investment Opportunity
- Soon To Be Completed To A High Spec. & Finish.

GROUND FLOOR  
389 sq.ft. (36.1 sq.m.) approx.

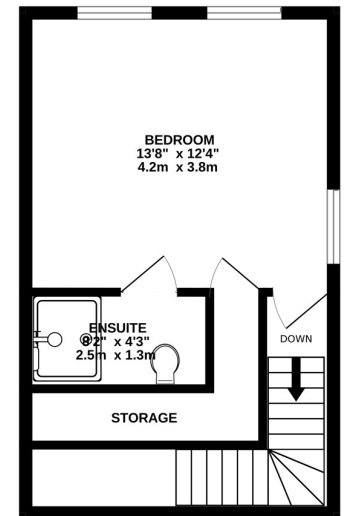


1ST FLOOR  
389 sq.ft. (36.1 sq.m.) approx.



2ND FLOOR  
389 sq.ft. (36.1 sq.m.) approx.

3RD FLOOR  
302 sq.ft. (28.1 sq.m.) approx.



TOTAL FLOOR AREA : 1469 sq.ft. (136.5 sq.m.) approx.

Whilst every attempt has been made to ensure the accuracy of the floorplan contained here, measurements of doors, windows, rooms and any other items are approximate and no responsibility is taken for any error, omission or mis-statement. This plan is for illustrative purposes only and should be used as such by any prospective purchaser. The services, systems and appliances shown have not been tested and no guarantee as to their operability or efficiency can be given.

Made with Metropix ©2024