

**5 Bedroom(s), Semi-Detached House, Freehold**

**Mile End Avenue, Hatfield, Doncaster.**



- 3D Virtual Tour Available
- Kitchen with Utility Space
- Family Bathroom
- Rear Enclosed Garden
- Popular Location

- Five Bedroom Extended Semi Detached Family Home
- Ground Floor Shower Room
- Sizeable Lounge Diner
- Spacious Driveway and Garage
- Local Amenities

**£225,000**  
**For Sale**

*Book your viewing today* Tel: 01302 247754



## Owner's View

Located in the sought-after village of Hatfield, this spacious five-bedroom semi-detached home on Mile End Avenue offers excellent family accommodation throughout. The property benefits from a driveway providing off-road parking and a private rear enclosed garden, perfect for families and entertaining. Inside, the ground floor features a welcoming lounge diner, a fitted kitchen with useful utility space, and a convenient shower room. Upstairs hosts five well-proportioned bedrooms along with a family bathroom, making this an ideal home for larger households or those needing extra space. Close to local schools, shops, and transport links, this property combines generous living space with a great location.

## Ground Floor

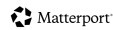
## Lounge Diner

## Floor Plan



GROSS INTERNAL AREA  
FLOOR 1: 50.1 m<sup>2</sup> FLOOR 2: 34.8 m<sup>2</sup>  
TOTAL: 84.9 m<sup>2</sup>

SIZES AND DIMENSIONS ARE APPROXIMATE, ACTUAL MAY VARY.



## Kitchen





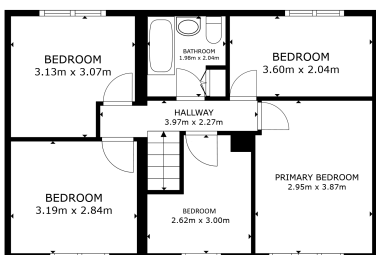
## Shower Room



## Bedroom

## First Floor

### Floor Plan



FLOOR 2

GROSS INTERNAL AREA  
FLOOR 1: 90.1 sq. m. FLOOR 2: 14.8 sq. m.  
TOTAL: 104.9 sq. m.

SIZES AND DIMENSIONS ARE APPROXIMATE, ACTUAL MAY VARY



## Master Bedroom



## Bedroom







**Bedroom**



**Bedroom**



**Bathroom**



## Externals

### Front Aspect

### Rear Garden

## Property Information

Council Tax Band - B

Utilities - Mains Gas, Mains Electricity, Mains Water

Water Meter - No

Tenure - Freehold

Solar Panels - No

Space Heating System - Gas Boiler with radiators

Approximate Heating System Installation Date -

Water Heating System - Gas boiler (Combi)

Approximate Water Heating Installation Date -

Boiler Location - Garage

Approximate Electrical System Installation Date -

Permanent Loft Ladder - No

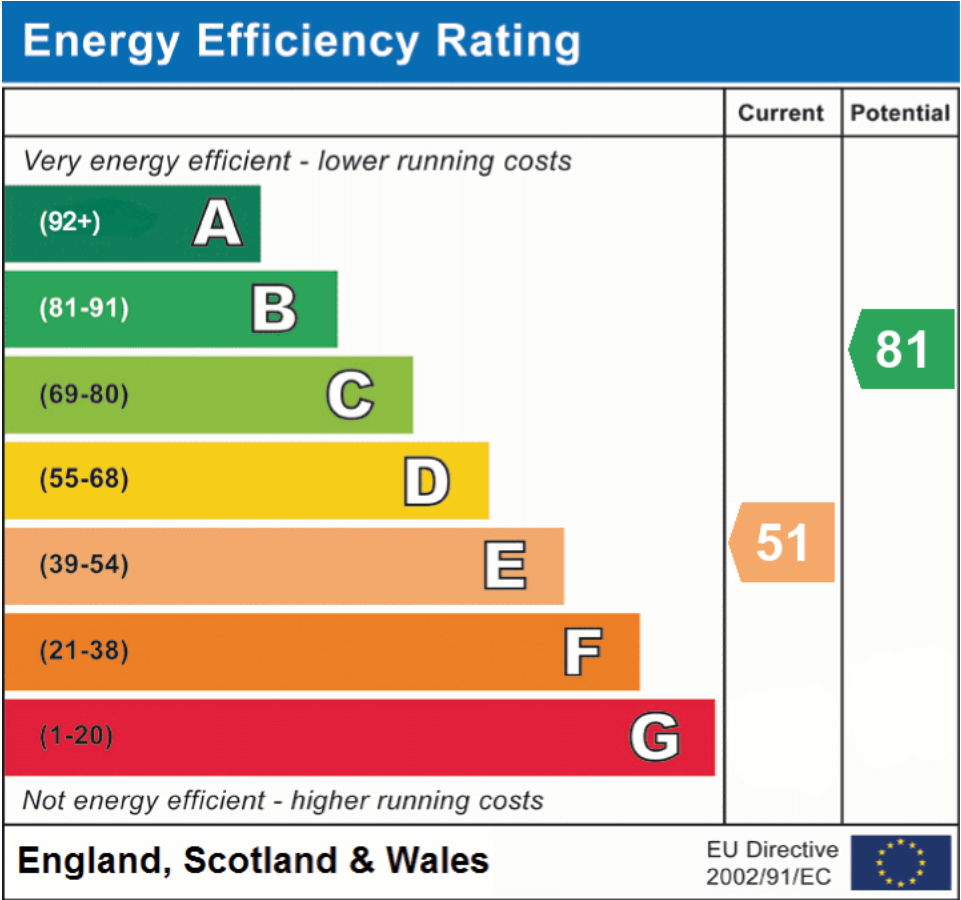
Loft Insulation - No

Loft Boarded out - No

Whilst every effort is made to ensure that the information contained in these particulars is reliable, they do not constitute or form part of an offer or any contract. The Property Hive accept no liability for the accuracy of the contents, and therefore they should be independently verified by prospective buyers or tenants before agreeing an offer. All measurements provided are approximate and should be verified before exchange of contracts. No appliances, fixtures or fittings have been tested and should be checked by the buyer before exchange of contracts to ensure they are in good working order.



## Energy Performance Certificate



All measurements provided are approximate and should be verified before exchange of contracts. No appliances have been tested and should be checked to ensure they are in good working order.