



FELLS GULLIVER
ESTATE AGENTS

023 8028 4411
www.fellsgulliver.com

Plot 4 (10 Glasshayes Way) Lyndhurst Park, Glasshayes Way, Lyndhurst, HampshireSO43 7ET

£345,000

- Two bedrooms
- 10 year warranty
- Allocated parking
- High ceilings
- Adjacent to open Forest
- First floor
- High specification
- Lift to all floors
- Double aspect
- Incentives available





2



2



1

A beautifully appointed first floor apartment extending to some 876 sq. feet. This specific property benefits from a wealth of natural light from the sash windows and super ceiling heights enhancing the natural elegance associated with Georgian style architecture.

A superb open plan living incorporating a fully fitted kitchen has super views over Lyndhurst. The principle bedroom is dual aspect and benefits from an En-suite. A further bedroom is served by an additional bathroom.

There is a lift access and staircase to all floors, all the apartments benefit from an allocated car parking spaces and communal grounds.

Phase One Lyndhurst Park is inspired architecturally by the Georgian era and comprises thirty individual apartments 70% of which are reserved. A viewing is essential to appreciate all that is on offer.

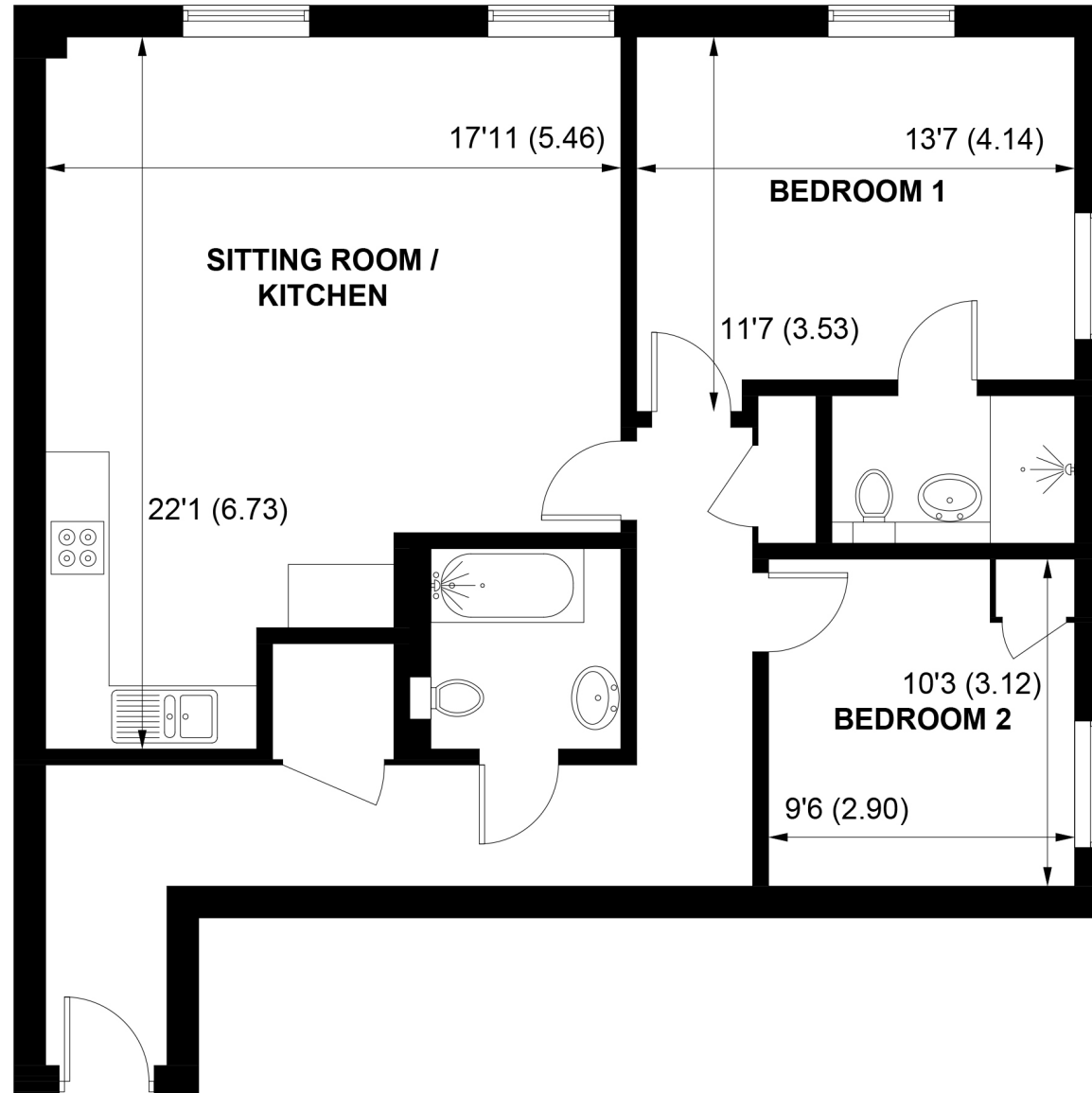


A stunning landmark new development within the capital of the New Forest. A beautiful collection of apartments and houses built by the esteemed Hoburne Developments. Further details available within brochure. Reservations now being taken.









FIRST FLOOR

APPROXIMATE GROSS INTERNAL AREA = 867 SQ FT / 80.6 SQ M

NOT TO SCALE (For illustrative purposes only as defined by RICS Code of Measuring Practice) 2025 ©
Produced by Emzo Marketing



FELLS GULLIVER
ESTATE AGENTS

023 8028 4411
www.fellsgulliver.com