



32 George Street, Staines-upon-Thames, TW18 4LB

WELL PRESENTED AND SPACIOUS ONE BEDROOM GARDEN MAISONETTE SITUATED IN THE HEART OF STAINES TOWN CENTRE IDEALLY LOCATED WITHIN MOMENTS OF HIGH STREET & STATION. The property benefits from a spacious lounge/diner, separate fitted kitchen, large double bedroom, white bathroom suite, private rear garden and a long lease. Viewings Highly Recommended!

ROOM DESCRIPTIONS

Covered Porch

With front door leading to:

Entrance Hall

Light and power points, wood-style laminate flooring, single radiator, two built-in storage cupboards. Doors to:

Lounge

Rear and side aspect UPVC double glazed windows, light and power points, two double radiators, TV point, wood-style laminate flooring, rear aspect UPVC double glazed French doors to garden.



Kitchen

Rear aspect UPVC double glazed window, range of fitted units at eye and base level, roll edged worktops, single drainer sink unit with mixer tap, space for washing machine, cooker and fridge/freezer. Wall mounted Combi-boiler, rear aspect UPVC double glazed door to garden.



Bedroom 1

Front aspect UPVC double glazed window, light and power points, double radiator, range of built-in wardrobes.



Bathroom

Panel enclosed bath with mixer tap and shower attachment over, pedestal wash hand basin with mixer tap, low level W.C, single radiator, partly tiled walls, tiled floor, light point, extractor.



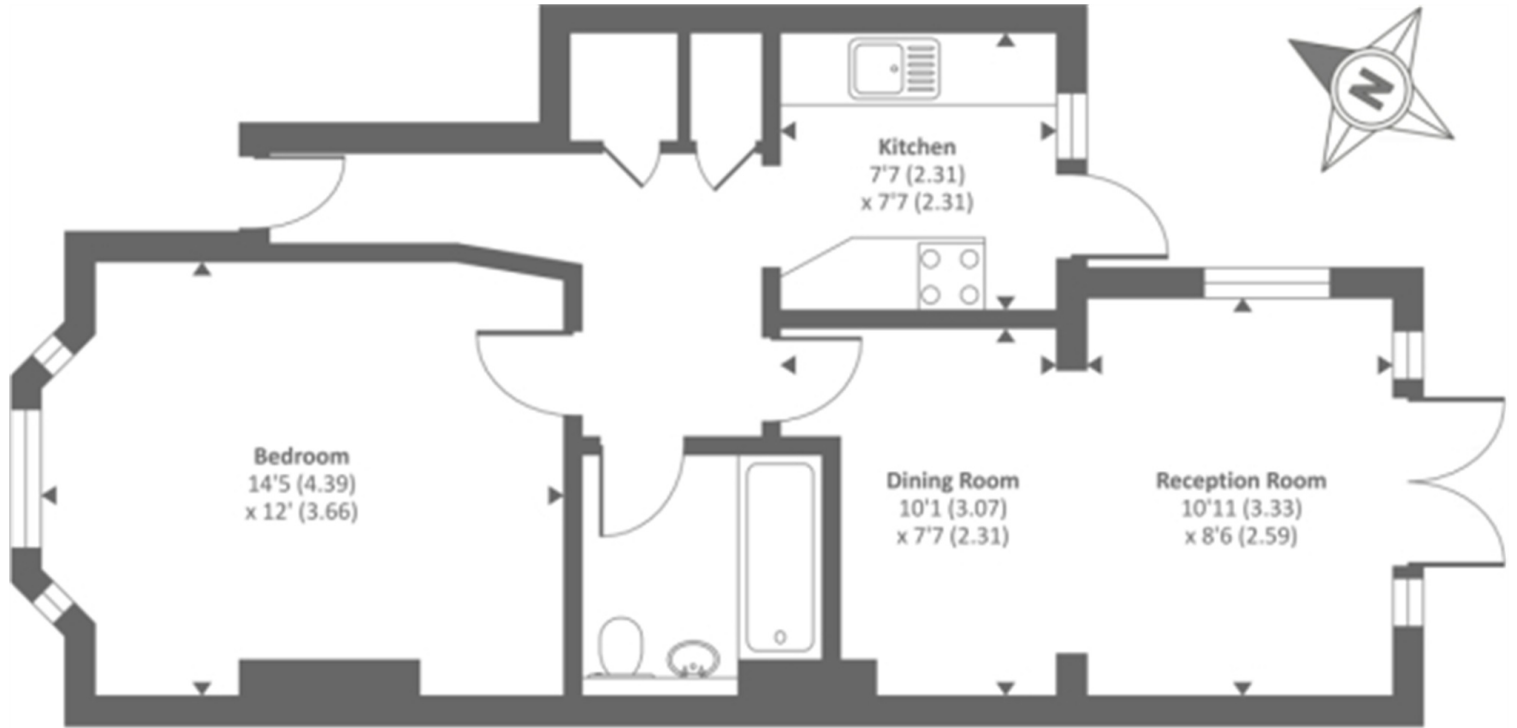
Outside

Rear Garden

Mainly laid to lawn with paved patio area, enclosed by wood-panel fencing and hedge.



FLOORPLAN



Ground floor

Approx. gross internal floor area 542 SQFT / 50.4 SQM
Approx. gross external floor area 637 SQFT / 59.2 SQM