

12 St Georges Road, Petts Wood, Orpington, Kent, BR5 1JD

**Property Images**



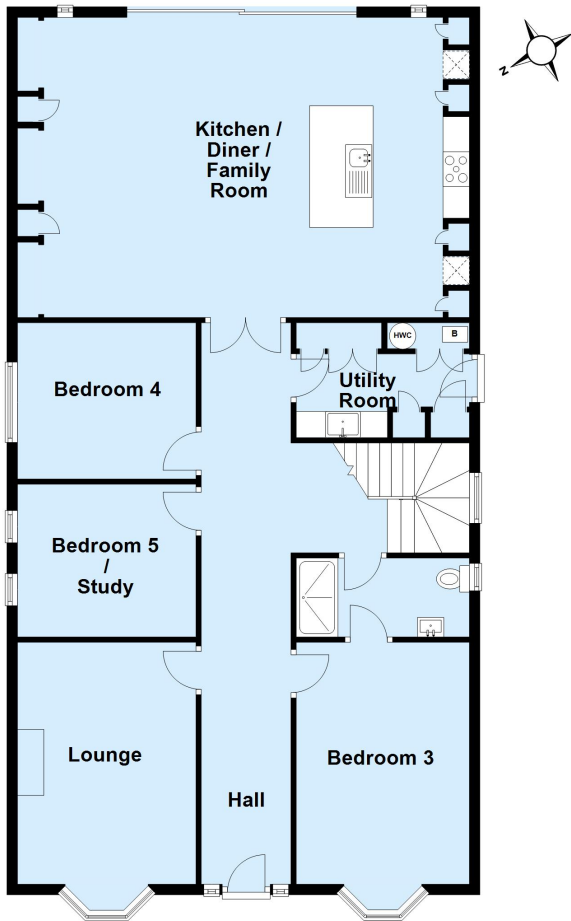






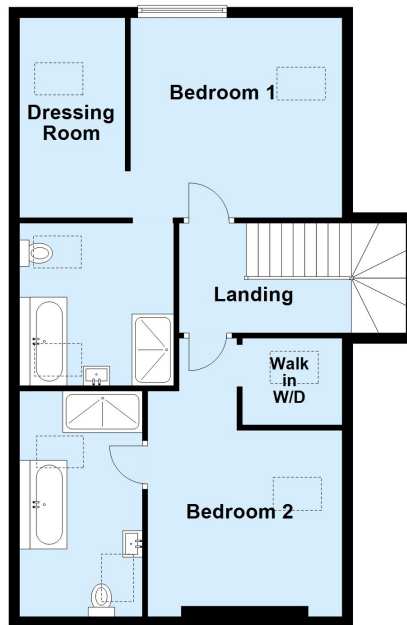
### Ground Floor

Approx. 141.3 sq. metres (1520.6 sq. feet)



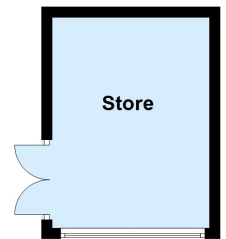
### First Floor

Approx. 72.1 sq. metres (775.9 sq. feet)



### Outbuilding

Approx. 11.9 sq. metres (128.5 sq. feet)



Total area: approx. 225.3 sq. metres (2425.1 sq. feet)

This plan is for general layout guidance and may not be to scale.  
Plan produced using PlanUp.