



Stapleton Close, Potters Bar, Hertfordshire, EN6

£1,700 pcm

- **First floor apartment**
- **Spacious living / dining room**
- **Modern bathroom**
- **Quiet residential location**
- **Two bedrooms**
- **Separate fitted kitchen**
- **Approx. 800 sq ft (74.3 sq m)**
- **Close to local amenities and transport links**

Stapleton Close, Potters Bar, Hertfordshire, . EN6

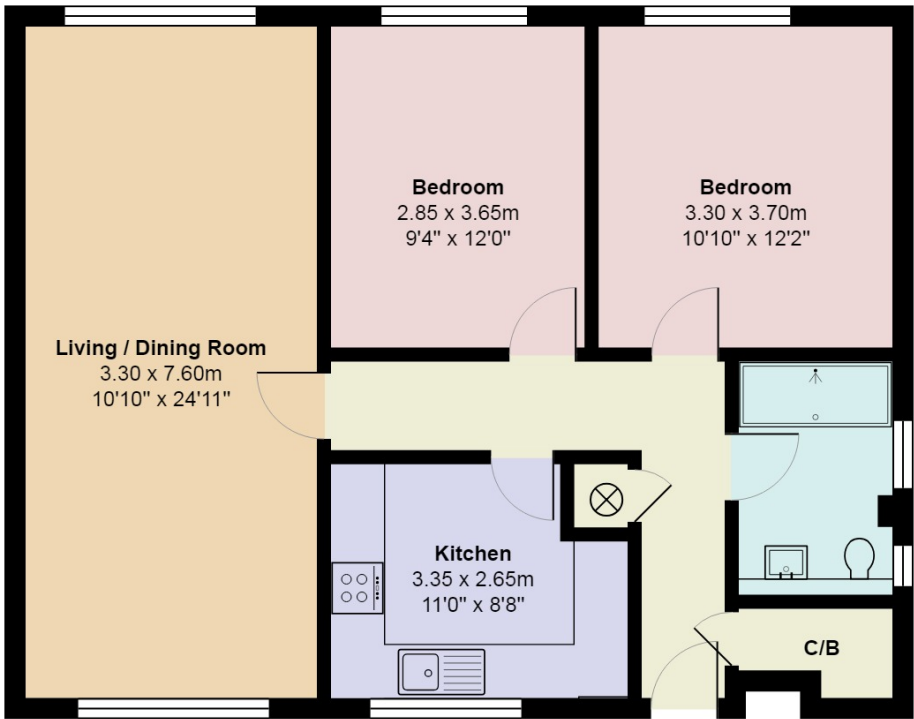
£1,700 pcm Freehold

First Floor Two-Bedroom Apartment – Stapleton Close, Potters Bar, EN6 4AF

A well-proportioned first floor apartment situated in a quiet residential development in Stapleton Close, Potters Bar. Offering approximately 800 sq ft (74.3 sq m) of accommodation, this home is ideal for professionals, couples, or a small family seeking comfortable living in a convenient location. The property features a spacious living and dining room, providing ample space for both relaxation and entertaining. The separate fitted kitchen offers good storage and worktop space, making it practical for everyday use.

There are two well-sized bedrooms, both benefiting from natural light, alongside a modern bathroom suite. The layout is complemented by a central hallway with storage and a separate cupboard, creating a practical and well-balanced living space.

Located within easy reach of local shops, amenities, and transport links, the apartment offers convenient access to Potters Bar town centre and surrounding areas while enjoying a peaceful residential setting.



Stapleton Close, Hertfordshire EN6

Total Area: 74.3 m² ... 800 ft²

All measurements are approximate and for display purposes only.

