



Beautifully renovated period cottage £420,000

1 Catherston Cottages, The Street, Charmouth, Dorset DT6 6LT

FORTNAM
SMITH & BANWELL

in brief...

Beautifully refurbished to a high standard
Character features throughout
New kitchen & bathroom
CH and DG
Stylish bathroom

3 bed period cottage
Exposed beams & woodburner
Long side garden with large patio beside a pretty river
Large living Room

*Traditional cottage
beautifully renovated
throughout*



in more detail...

A beautifully presented Period end terrace cottage in coastal Charmouth, which has had a very stylish, sympathetic, high standard total refurbishment to the whole property. The results are stunning, decorated in light neutral tones with real attention to finish & detail. Easy ten minute walk to the beach. Five minute walk to the local shops.

Entrance is via the side patio door. Very pretty Living Room (originally two small rooms) fireplace to far end with woodburner. Light stone floor tiles. Two window seats with bespoke shuttered windows. Several steps down into Kitchen/Utility. Shaker style fitted kitchen with solid wood worktops, butler sink and Range cooker. Integrated slimline Bosch Dishwasher. Space for American style fridge freezer. Concealed Worcester combi gas boiler. Integrated washing machine.

Stairs rise to first floor: Half landing with door to single bedroom. Steps down to very pretty bathroom with freestanding bath & pillar taps sink unit and WC.

Further step up to 2 double bedrooms. One has wall to wall fitted wardrobes and exposed stone feature wall.

Outside the side front door there is a large gravelled patio leading around the back of the cottage. Steps lead over a dwarf wall onto a long curved lawn bordered on one side with a stone wall and the other a pretty riverbank. At the end there is a decked area providing a picturesque al fresco seating area.

Street parking in the lane immediately opposite the property a few steps away.



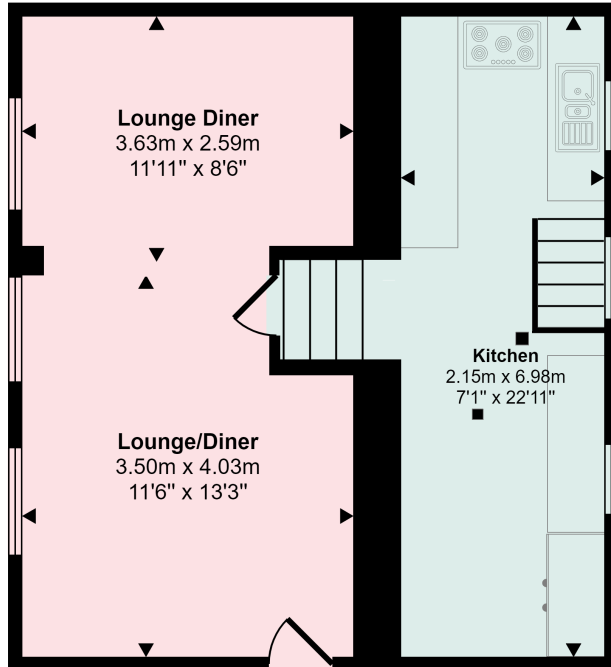
All mains services. Gas central heating. DFH 1025 EPC-D DCC-B

Directions: From the centre of the village proceed down the road passing Manor Farm on the left side. 1 Catherston Cottage is over the bridge on the right side. Park in lane opposite with easy unopposed parking on right.

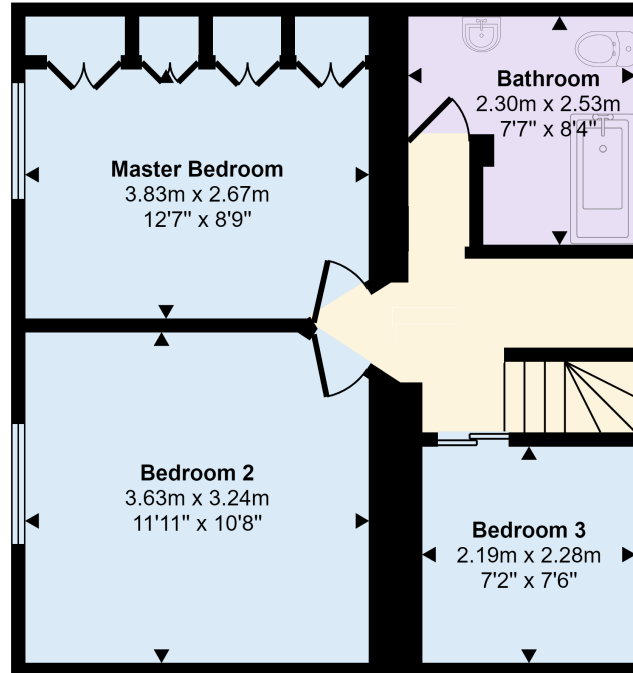
Charmouth offers a great community with lots of interests. See www.charmouth.org for more details. Lovely fossil beach & southwest coastal path on the doorstep. Good range of amenities. within easy driving distance are Lyme Regis, Axminster & Bridport. Good bus services through the village.

the location...

Approx Gross Internal Area
86 sq m / 926 sq ft



Ground Floor
Approx 43 sq m / 460 sq ft



First Floor
Approx 43 sq m / 465 sq ft

This floorplan is only for illustrative purposes and is not to scale. Measurements of rooms, doors, windows, and any items are approximate and no responsibility is taken for any error, omission or mis-statement. Icons of items such as bathroom suites are representations only and may not look like the real items. Made with Made Snappy 360.



FORTNAM
SMITH & BANWELL

The Street, Charmouth, DT6 6PU
call: 01297 560945
email: teresanoel@fsb4homes.com
web: www.fsb4homes.com

Consumer Protection from Unfair Trading Regulations 2008 We have not tested any apparatus, equipment, fixtures, fittings or services and so cannot verify that they are in working order or fit for purpose. You are advised to obtain verification from your solicitor or surveyor. References to the tenure of a property are based on information supplied by the seller. We have not had sight of the title documents and a buyer is advised to obtain verification from their solicitor. Items shown in photographs are not included unless specifically mentioned within the sales particulars, but may be available by separate negotiation. We advise you to book an appointment to view before embarking on any journey to see a property, and check its availability.