



Whernside

Kirkby Lonsdale





 lunevalley
ESTATES.



Whernside



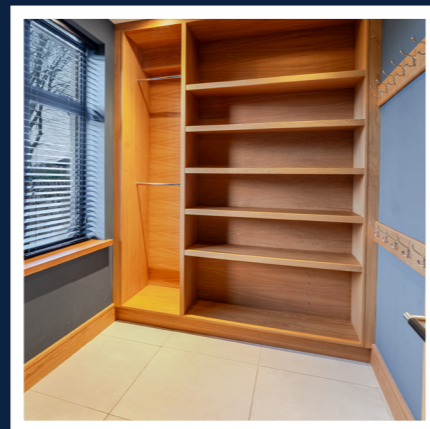
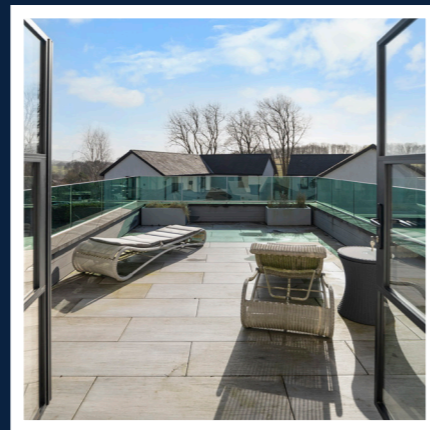
Whernside, in the heart of historic Kirkby Lonsdale epitomises luxury living and has been the subject of extensive care and renovation throughout the current proprietorship. This is more than just a house — it's a forever home, waiting to be filled with new memories.

Set in the heart of the picturesque and highly sought-after market town of Kirkby Lonsdale, Whernside is an outstanding six-bedroom family home that offers an abundance of space, style, and modern comforts.

Thoughtfully designed across three expansive floors, this impressive residence provides a perfect blend of elegant living and practical family-friendly spaces, making it an ideal choice for those looking for a luxurious yet welcoming home.

As you step through the front door, you are greeted by a bright and inviting entrance hall that immediately sets the tone for the rest of the home. The ground floor is perfectly laid out for both everyday family life and entertaining, with multiple reception areas offering flexibility for different needs.

Viewings are strictly through Lune Valley Estates. Please contact the office seven days a week for further information and to arrange appointments.



6 BEDS



5 BATHS

- To the front elevation there is a well laid out 'boot room' as well as functional and practical office space.
- A hot tub enclosure provides a luxurious retreat, perfect for unwinding after a long day.
- Gorgeous private sun terrace attached to the master suite.



Take a closer look...

Property Type:

Detached

Square Footage:

3917 sqft

Council Tax Band:

G

EPC Rating:

Tbc

Tenure:

Freehold

Why Kirkby Lonsdale?



Located in the heart of Kirkby Lonsdale, Wherside benefits from the charm and convenience of this thriving market town. With its independent shops, cafés, and award-winning restaurants, as well as excellent schools and a strong sense of community, it's easy to see why Kirkby Lonsdale is one of the most desirable places to live in the region.

The surrounding countryside, including the Yorkshire Dales and Lake District, offers endless opportunities for outdoor adventures, from scenic walks to cycling and more.

With its expansive living spaces, multiple reception rooms, luxurious bedrooms, and beautifully designed outdoor areas, Wherside is the perfect home for families who love to entertain, enjoy quality time together, and appreciate the balance of town and country living. Rarely does a home of this caliber come to the market, offering a truly special opportunity for those looking to settle in this stunning part of Cumbria.



The Garden



Stepping outside, the rear garden is designed for both relaxation and entertainment. A hot tub enclosure provides a luxurious retreat, perfect for unwinding after a long day, while the well-maintained garden offers ample space for children to play or for hosting summer barbecues with family and friends. The seamless connection between the indoor and outdoor spaces makes this home perfect for those who love entertaining.

To the front of the property, a large private driveway, secured behind electric gates, provides ample parking for multiple vehicles. The detached garage offers additional storage or potential for a home gym, workshop, or studio space.



Garage



Parking



Garden





The Bedrooms



The upper floors are thoughtfully designed to provide a private and peaceful retreat for every member of the family. The first floor is home to the stunning master suite, which boasts a spacious bedroom, a luxurious en-suite bathroom, dressing room and an incredible private sun terrace offering breathtaking views – an ideal spot to enjoy a morning coffee or unwind in the evening.

A second well-proportioned bedroom on this floor also benefits from its own en-suite, making it perfect for guests or older children who appreciate a little extra privacy.

The top floor continues to impress, offering three further spacious bedrooms, providing plenty of room for a growing family or accommodating visiting relatives and friends. With high ceilings, generous proportions, and an abundance of natural light, every bedroom in Wherside feels bright, airy, and inviting.



Kitchen & Dining Room



At the heart of the home is the breathtaking open-plan kitchen, dining, and day lounge area – a true showpiece designed for modern living. The expansive kitchen is fitted with high-end appliances, ample storage, and generous worktops, making it a dream for any home cook.

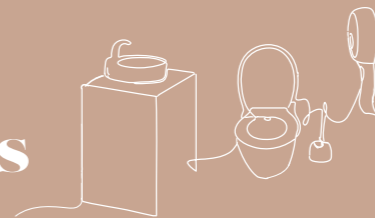
The adjoining dining area easily accommodates large gatherings, while the comfortable day lounge creates a relaxed space for family and friends to unwind. Bathed in natural light, this entire area seamlessly connects to the rear garden, making it perfect for indoor-outdoor entertaining.

The utility room is located just off the dining space and features its own entrance from the driveway and plenty of counter space, storage and room for white goods and appliances.





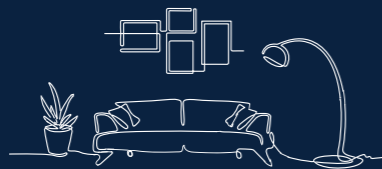
The Bathrooms



Alongside a WC on the ground floor and two en-suite bathrooms on the first floor, there are also two beautifully appointed family bathrooms – one on the first floor and one on the top floor.



The Lounges



To the rear of the property, two separate living rooms provide elegant yet cozy spaces for relaxation. Whether you prefer a formal sitting room for entertaining guests or a more casual lounge for family movie nights, these beautifully appointed rooms offer both comfort and versatility.





Total Area: 363.9 sq. metres (3917.4 sq. feet)



About Lune Valley Estates

Nestled in the heart of the breath-taking Lune Valley we are a professional independent agency specialising in luxury property. We understand the significance of moving home and that both selling your existing home and finding the next one is as much financial as it is emotional. We combine local expertise, a strong network of partners and a proactive approach to ensure you have the best possible experience and can begin the next chapter with excitement.



“Honesty, integrity, and client care are fundamental values stitched into the fabric that makes Lune Valley Estates and we make them a part of everything we do.”





Whernside

Kirkby Lonsdale

/// ///xxx.xxx.xxx



015242 56625 | team@lunevalleyestates.com | www.lunevalleyestates.com