

Farnsworth Court, West Parkside, London. £1,200 SE10 0QG.

360 VIDEO TOUR AVAILABLE SEE IT HERE NOW - Fantastic one bedroom apartment, enviably positioned within a sought after riverside development. The apartment briefly comprises spacious reception/dining room open plan to a newly fitted modern kitchen, double bedrooms and private balcony. The development is located a short walk from North Greenwich tube station (Jubilee Line), the Emirates Cable Cars and the O2 with the many attractions within, including bars and restaurants. It is also within walking distance to Sainsburys, Aldi, Asda and Ikea. The development is also home to an excellent primary school, nursery and Eco park. Further benefits include secure parking, 24 hour concierge, excellent transport links and located moments from the O2 Arena.

Viewing by appointment with 1st avenue.

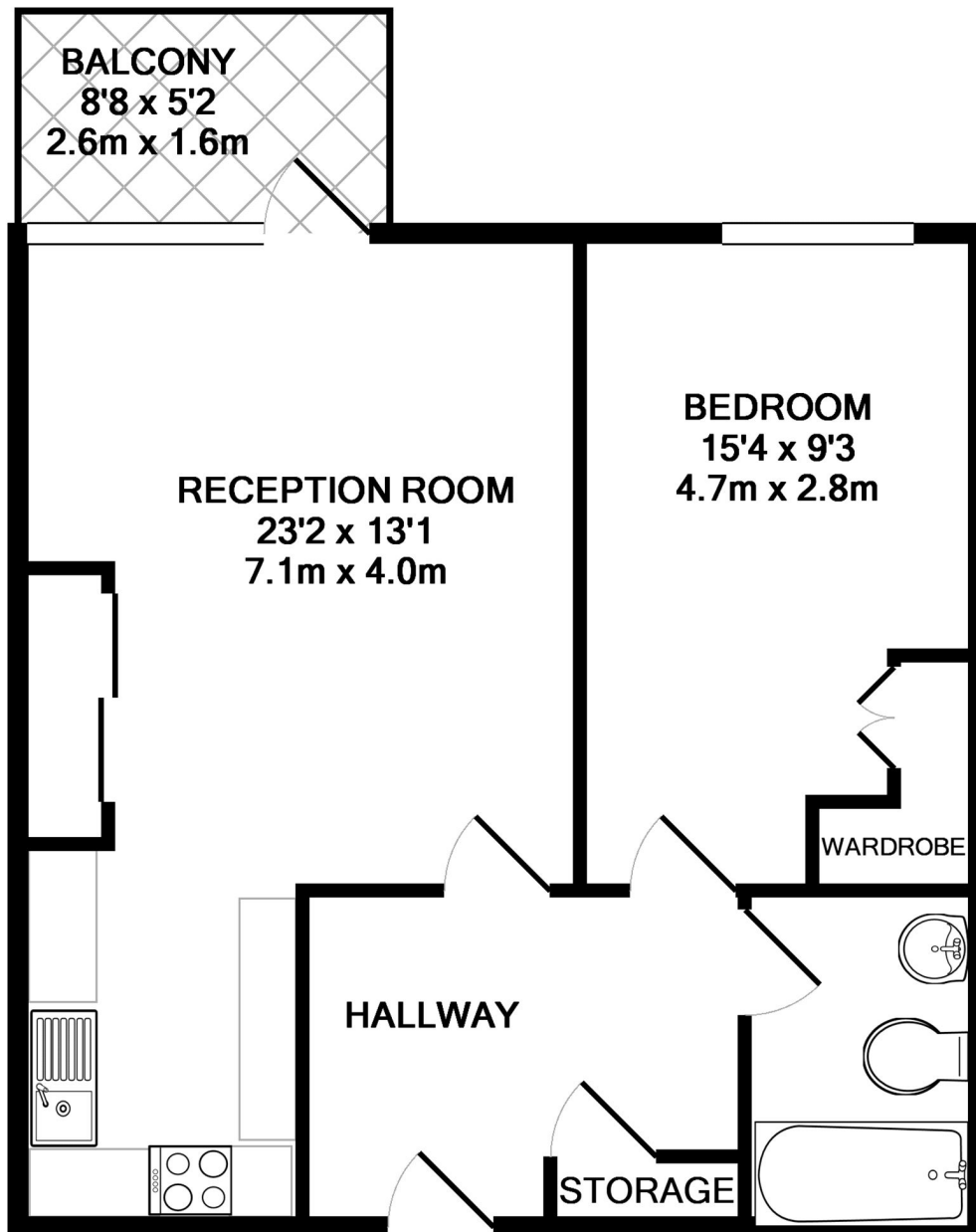
Call: 020 8293 8600

1st avenue, 128 Metcalfe Court, West Parkside, London SE10 0EL
email: info@1stavenue.co.uk

50 Farnsworth Court, West Parkside, London, . SE10 0QG.

£1,200

1stavenue
Real Estate Services



TOTAL APPROX. FLOOR AREA 518 SQ.FT. (48.1 SQ.M.)

Whilst every attempt has been made to ensure the accuracy of the floor plan contained here, measurements of doors, windows, rooms and any other items are approximate and no responsibility is taken for any error, omission, or mis-statement. This plan is for illustrative purposes only and should be used as such by any prospective purchaser. The services, systems and appliances shown have not been tested and no guarantee as to their operability or efficiency can be given

Made with Metropix ©2016

Viewing by appointment with 1st avenue.

Call: 020 8293 8600

1st avenue, 128 Metcalfe Court, West Parkside, London SE10 0EL
email: info@1stavenue.co.uk

1stavenue
Real Estate Services