



Woolgrove Road

Hitchin | Hertfordshire | SG4 0AT

www.stonegate-estates.co.uk



WOOLGROVE ROAD

Property Description

We are delighted to bring to the market this spacious two double bedroom Victorian terrace property.

Situated within an easy walk to the tarin station and offering no chain, this home is well proportioned with a open plan living room, a light and airy kitchen/breakfast room, an upstairs refitted bathroom suite and a good sized rear garden.

With some original features and offering the scope for improvement/extension (STPC), this period property has numerous benefits to suite the professional couple and give you the chance to make your mark on the property ladder.

Viewing comes strongly recommended and advised at your earliest convenience to avoid disappointment.

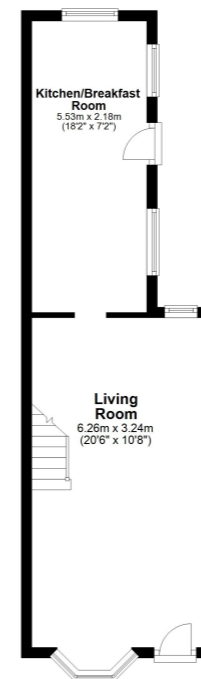
Hitchin town centre provides a broad range of shops and a regular traditional market, together with a good selection of restaurants, bars and pubs within its historic centre. The town also provides a swimming centre, theatres and a library, whilst the commuter is served by the mainline railway station (Kings Cross - 30 minutes) and direct links to the A1(M).

£395,000 Freehold

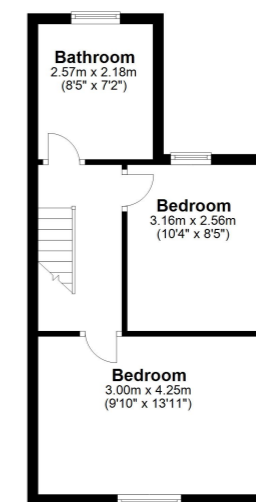




Ground Floor
Approx. 32.7 sq. metres (352.3 sq. feet)



First Floor
Approx. 32.5 sq. metres (349.4 sq. feet)



Total area: approx. 65.2 sq. metres (701.7 sq. feet)

All measurements shown are approximate and for guidance only. Garages and workshops are not included in any gross floor areas unless integral to the main building where they will be included.
Plan produced using PlanUp.



- Two Double Bedrooms
- Walking distance to Main Line Station
- Open Plan Living Room
- Kitchen/Breakfast Room
- Upstairs Bathroom
- No Chain
- Good location
- Large Garden

EPC Rating:

Stonegate Estate Agents

01462 438979

sales@stonegate-estates.co.uk | www.stonegate-estates.co.uk

