



Hollyford | Billericay | £425,000



Hollyford

Billericay | Essex | CM11 1EF

The Property Specialists of Billericay are delighted to offer for sale this beautifully presented three-bedroom family home situated on the popular North side of Billericay, close to both Buttsbury and Mayflower schools.

On entering the property, you are greeted by a light and bright entrance porch with ground floor cloakroom with glazed door leading through to the hallway. The hallway has laminated flooring with a large understairs storage cupboard and large cloakroom cupboard with stairs to first floor and access to the fantastic size lounge/diner and superb kitchen breakfast room.

The kitchen breakfast room has recently been fitted with a range of fitted units with complementary work tops and built in appliances including a double Neff oven, the flooring has modern marble effect large tiling and is a lovely room for entertaining. The lounge diner is a great size with views over to the garden area and double-glazed doors leading to the decked patio area.

On the first floor there are three good size bedrooms with a huge master bedroom, the family bathroom has the advantage of a three-piece suite, a bath with a shower overhead, and is fully tiled. The landing area has a storage airing cupboard and loft access to the large loft.

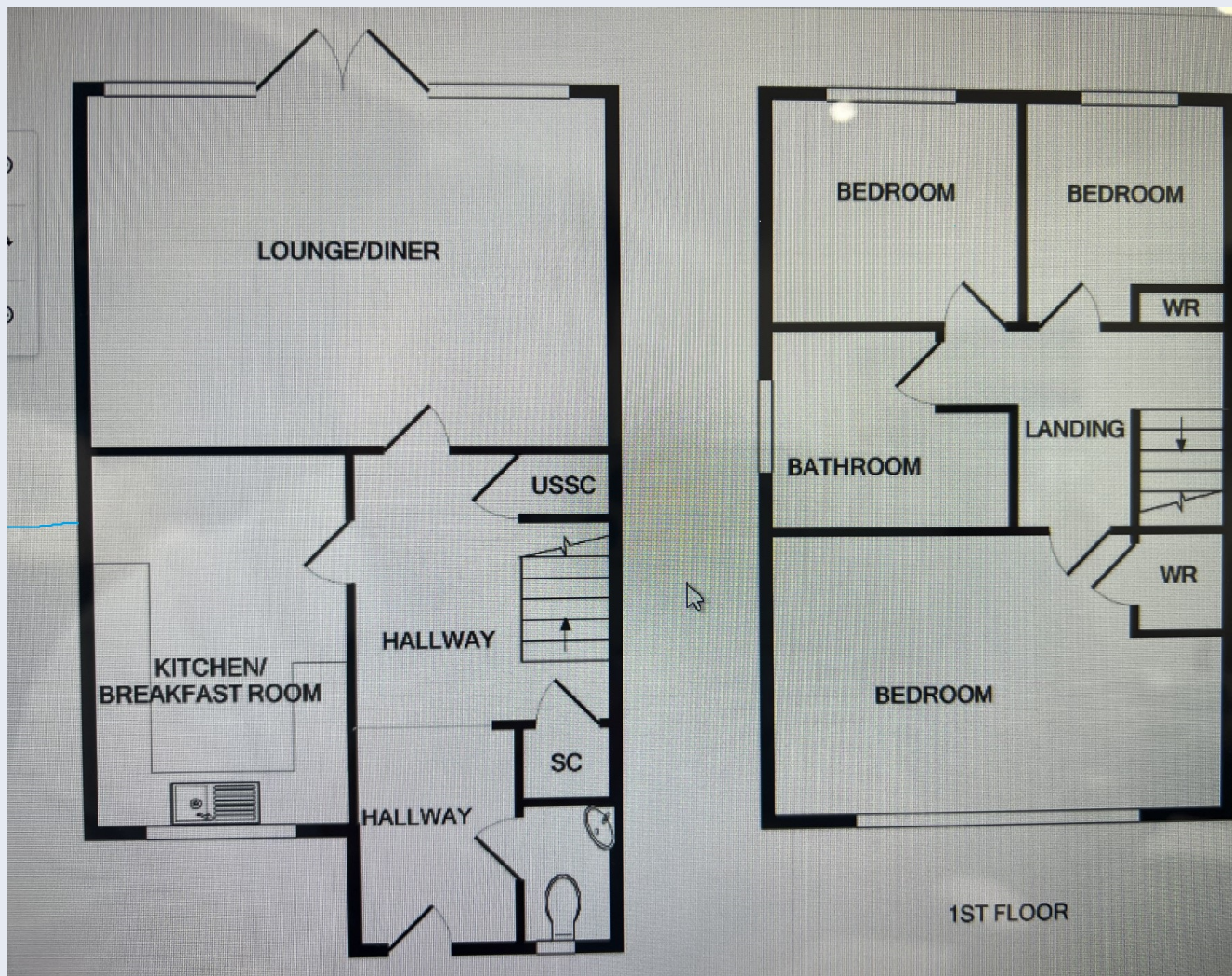
Outside the property you walk to the house within a mews of similar properties, this property has the advantage of a garage to the rear with direct access to the garden and there is also an additional parking area to the rear from the access road.





- Semi Detached Family Home
- Beautifully Presented Throughout
- Buttsbury / Mayflower Catchment Areas
- Ground Floor Cloakroom W/C
- Super Size Living Room
- Modern Fitted Kitchen Breakfast Room
- Three Fantastic Size Bedrooms
- Three Piece Modern Bathroom With Shower Over The Bath
- Decked Patio and Lawned Garden
- Garage Access To The Rear





Viewing strictly by appointment with The Property Specialists



Making Moving Home
Less Stressful

135 High Street, Billericay,
Essex, CM12 9AB
Tel: 01277 654446
sales@thepropertyspecialists.co.uk