



GREGORY BROWN
RESIDENTIAL SALES & LETTINGS

£295,000 Share of Freehold
FOR SALE



Hythe Court, Thorpe Road, Staines-upon-Thames, Surrey, TW18 3EB

SHARE OF FREEHOLD | WELL PRESENTED & SPACIOUS TWO BEDROOM, TWO BATHROOM APARTMENT SITUATED IN THIS SOUGHT AFTER MODERN PURPOSE BUILT DEVELOPMENT IDEALLY LOCATED FOR EASY ACCESS TO STAINES TOWN CENTRE & LOCAL MOTORWAY NETWORKS. The property benefits from a spacious lounge/diner, modern fitted kitchen, two well proportioned bedrooms (en-suite to bed 1), bonus office room, further modern white bathroom suite and allocated parking. Viewings Highly Recommended!

Gregory Brown

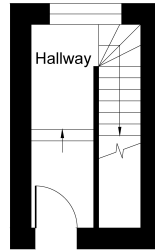
127a, High Street, Staines-upon-Thames, TW18 4PD

01784 451458

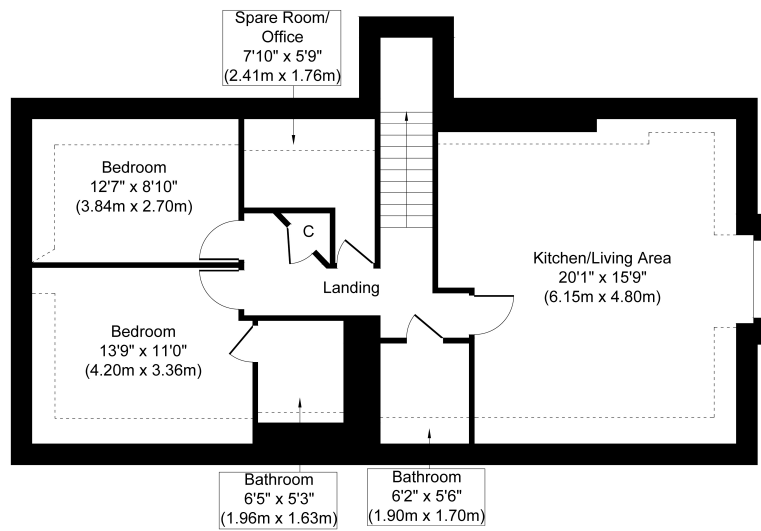
staines@gregory-brown.co.uk

ROOM DESCRIPTIONS

FLOORPLAN



Ground Floor
Approximate Floor Area
87 sq. ft
(8.11 sq. m)



First Floor
Approximate Floor Area
901 sq. ft
(83.71 sq. m)

Whilst every attempt has been made to ensure the accuracy of the floor plan contained here, measurements of doors, windows, rooms and any other items are approximate and no responsibility is taken for any error, omission, or mis-statement. The measurements should not be relied upon for valuation, transaction and/or funding purposes. This plan is for illustrative purposes only and should be used as such by any prospective purchaser or tenant. The services, systems and appliances shown have not been tested and no guarantee as to their operability or efficiency can be given.
Copyright V360 Ltd 2025 | www.houseviz.com