



- Four bedroom family home
- Sought after location
- Three reception rooms
- Hopkins Homes Build
- En suite to master
- Double garage
- Complete onward chain
- Beautifully presented throughout
- New to the market
- Gas central heating

## 9 St Francis Walk, Convent Lane, Braintree, Essex. CM7 9RL.

\*\* Guide Price £450,000 - £475,000 \*\*

Built to an excellent standard in 2011 by the highly reputable house builders Hopkins Homes, is this beautifully presented and deceptively spacious four-bedroom terraced house. Situated on the edge of the highly sought-after village of Bocking, the property boasts an array of spacious living accommodation arranged over three reception rooms, offering a versatile and beautifully maintained family home for a variety of prospective purchasers. The ground floor accommodation features an entrance hall that provides access to the first floor, a cloakroom, a spacious lounge with a feature fireplace, an atrium/conservatory, a fabulous kitchen/diner measuring in excess of 25', and a study.



# Property Details.

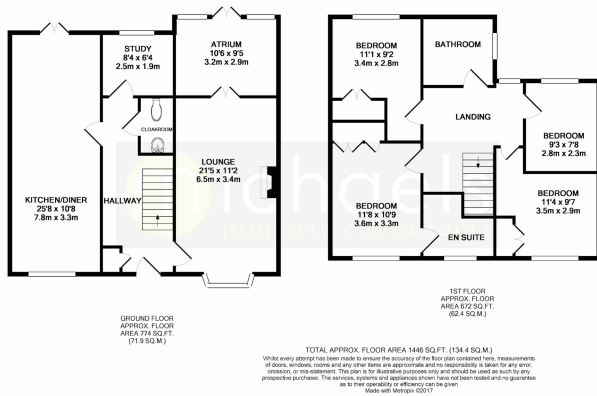


# Property Details.

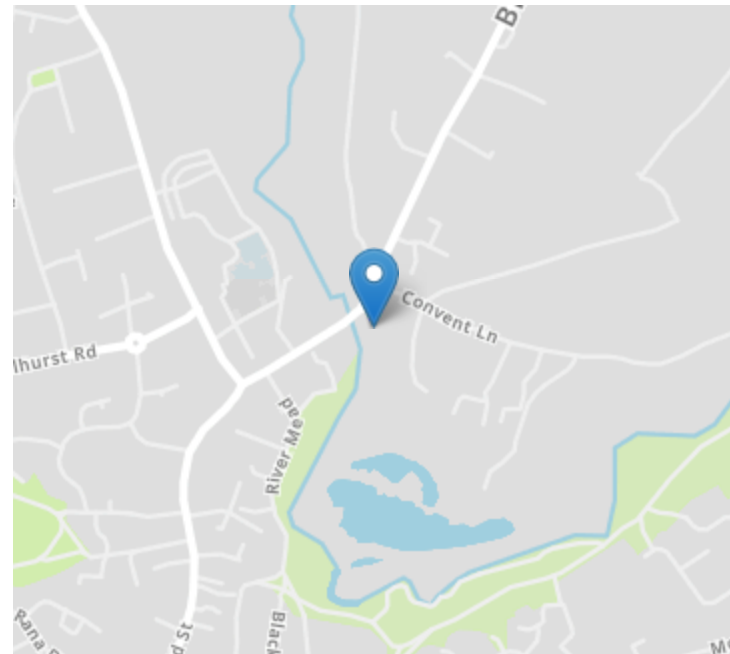


# Property Details.

## Floorplans



## Location



## Energy Ratings

We have not carried out a structural survey and the services, appliances and specific fittings have not been tested. All photographs, measurements, floor plans and distances referred to are given as a guide only and should not be relied upon for the purchase of carpets or any other fixtures or fittings. Gardens, roof terraces, balconies and communal gardens as well as tenure and lease details cannot have their accuracy guaranteed for intending purchasers. Lease details, service ground rent (where applicable) are given as a guide only and should be checked and confirmed by your solicitor prior to exchange of contracts.