



Biggleswade, Bedfordshire. SG18 8LA





3 Bedroom Semi-Detached Bungalow £350,000 Freehold

Rare to market! A chain free three bedroom chalet style bungalow with single garage, off road parking and within walking distance to local amenities.

Viewing highly recommended.

- Three bedroom chalet bungalow
- Single garage
- Large driveway
- No onward chain
- East facing rear garden
- Quiet cul-de-sac location
- Renovation potential
- Walking distance from local amenities
- EPC - E - Council tax - D



Ground floor:**Entrance Hall:**

Abt: 7' 10" x 4' 0" (2.39m x 1.22m) Part glazed wooden front door leading to entrance hall with double glazed window to front aspect. Built in storage cupboard. Radiator. Doors to kitchen and living room. Carpet flooring.

Kitchen:

Abt: 12' 1" x 7' 10" (3.68m x 2.39m) Built in matching wall and base units with two-seater breakfast bar. Tiled splashback areas. Space for free standing fridge/freezer and washing machine. Built in eye level microwave oven and grill. Stainless steel sink and drainer. Double glazed window to side aspect. Vinyl flooring. Radiator.

Living Room:

Abt: 15' 10" x 12' 01" (4.83m x 3.68m) Double glazed window to front aspect. Chimney breast with gas fire and back boiler. Decorative coving to ceiling. Door leading to dining area. Carpet flooring.

Dining Room:

Abt: 11' 0" x 8' 11" (3.35m x 2.72m) A bright space overlooking the garden with doors leading to conservatory and stairs rising to first floor. Decorative coving. Carpet flooring. Double glazed window to rear aspect. Radiator.

Conservatory:

Abt: 9' 6" x 8' 3" (2.90m x 2.51m) Located off of the Dining room to the side of the property. Vinyl flooring. Sliding doors onto garden.

Shower Room:

Abt: 7' 11" x 5' 11" (2.41m x 1.80m) Currently an easy access shower room with a low-level WC, wash hand basin and walk in shower. Floor to ceiling tiles. Obscured double glazed window to side aspect. Vinyl flooring.

Bedroom One:

Abt: 12' 6" x 8' 10" (3.81m x 2.69m) Located on the ground floor opposite the shower room, a large double bedroom with fitted wardrobes and storage cupboard. Double glazed window to side aspect. Carpet flooring. Decorative coving. Radiator.

First Floor**Bedroom Two:**

Abt: 12' 7" x 8' 8" (3.84m x 2.64m) Located on the first floor with full width storage cupboard, double glazed window to rear aspect and decorative coving. Carpet flooring. Radiator. Restricted head height.

Bedroom Three:

Abt: 14' 10" x 8' 8" (4.52m x 2.64m) Double glazed window to rear aspect. Large storage cupboard. Carpet flooring. Decorative coving. Radiator. Restricted head height.

Outside:**Garage:**

Abt: 18' 5" x 8' 6" (5.61m x 2.59m) Single garage with up and over door to front and single door to side. Electrics. Storage to rear accessed via single door.

Garden:

East facing garden mainly laid to lawn with small patioed area. To the front is a small front garden with shrub border. The driveway can comfortably accommodate three cars.

Location:

This lovely property is tucked away within a quiet cul-de-sac off of Dells Lane which runs from the South side of Biggleswade to the High Street.

Within walking distance, you will find some small independent takeaways and a convenience store. The A1 retail park is only a short drive away with large high street stores such as Next, Marks & Spencer, Boots and Homebase. There are also lots of countryside walks nearby including the 'Green Wheel' and longer walks providing access to the RSPB Nature Reserve in Sandy.

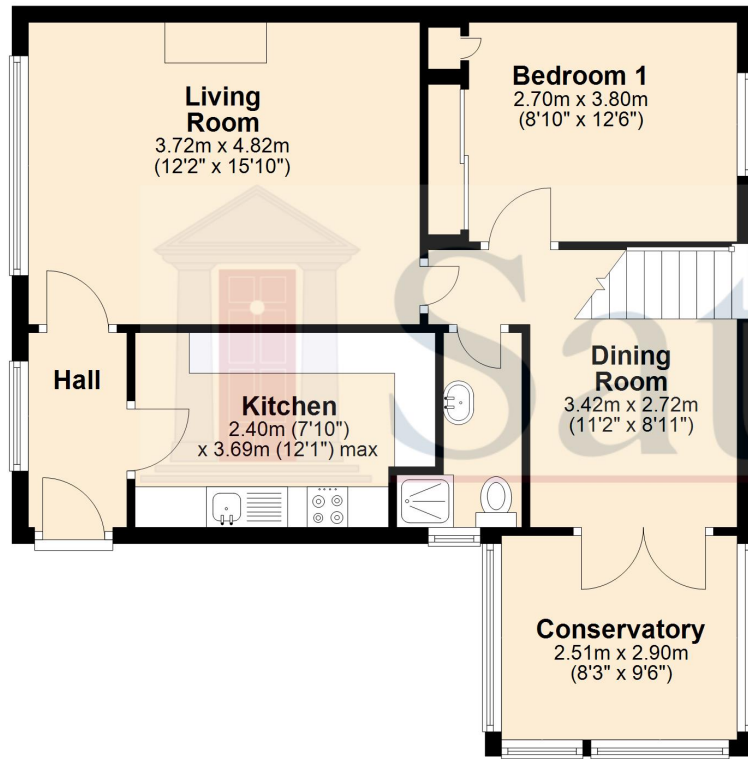
Located just under 1 mile away is Biggleswade town centre & mainline train station which offers direct links into London's Kings Cross St Pancras, with a journey time of approx. 30 minutes.



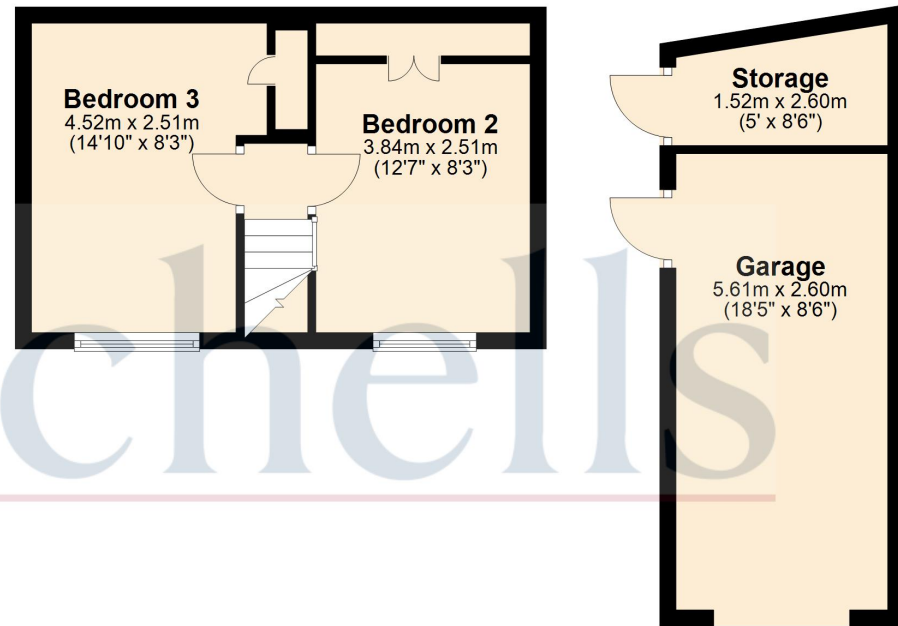
These particulars are a guide only and do not constitute an offer or a contract. The floor plan is for identification purposes only and not to scale. All measurements are approximate and should not be relied upon if ordering furniture, white goods and flooring etc. We have presented the property as we feel fairly describes it but before arranging a viewing or deciding to buy, should there be anything specific you would like to know about the property please enquire. Satchells have not tested any of the appliances or carried out any form of survey and advise you to carry out your own investigations on the state, condition, structure, services, title, tenure, and council tax band of the property. Some images may have been enhanced and the contents shown may not be included in the sale. Satchells routinely refer to 3rd party services for which we receive an income from their fee. If you would like us to refer you to one of these services please ask one of our staff who will pass your details on. We advise you check the availability of the property on the day of your viewing.



Ground Floor



First Floor



For illustrative purposes only - NOT TO SCALE - Measurements shown are approximate. The size and position of doors, windows, appliances and other features are approximate.
Plan produced using PlanUp.