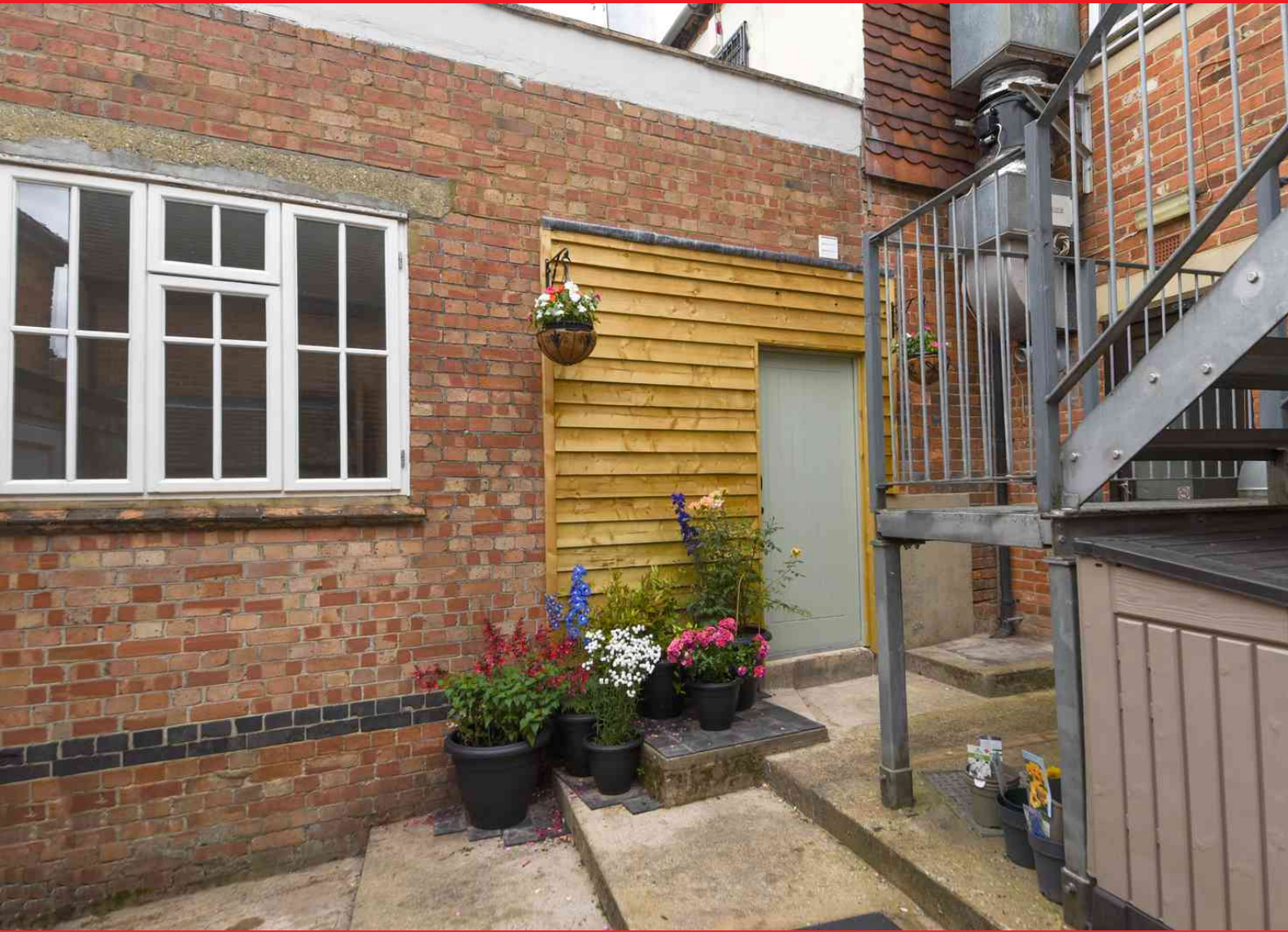
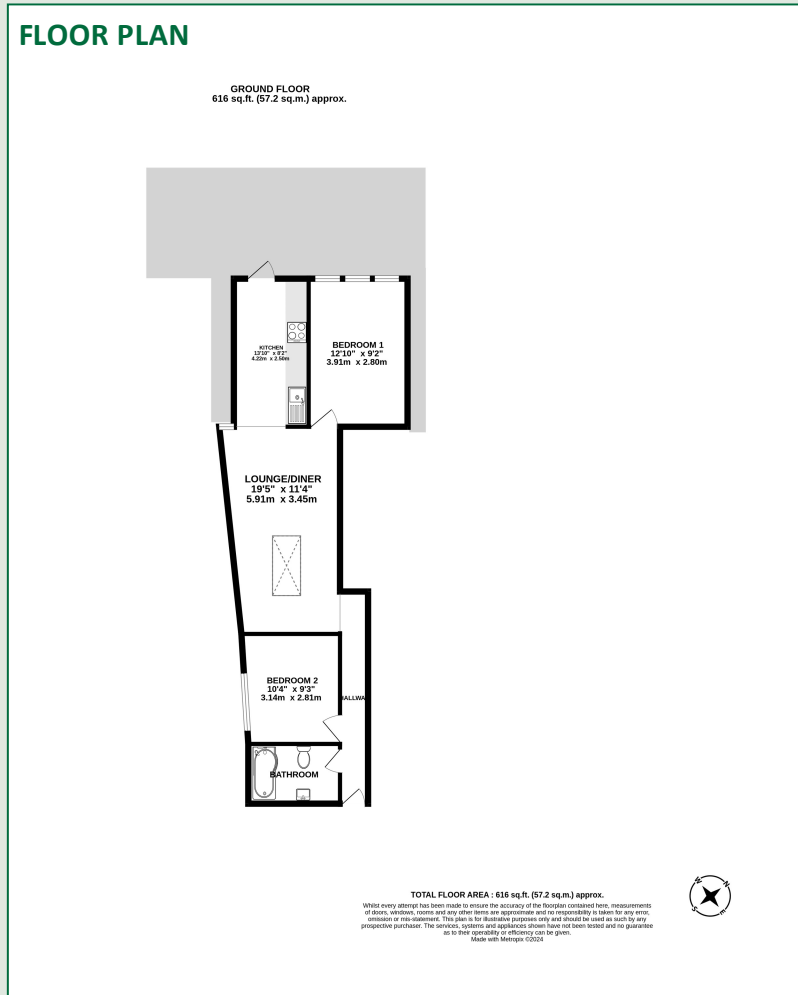


FOR SALE  
£215,000



## DESCRIPTION

**NO ONWARD CHAIN.** We are delighted to bring to the market this spacious two-bedroom property that has been completely renovated. The accommodation comprises an entrance hallway, an open-plan kitchen with integrated dishwasher, washing machine oven and hob. Lounge/ diner with sky light, two double bedrooms, and a bathroom with a P - shaped bath. There is also a private garden, and the property is situated a few moment's walk from Newbury town centre and the train station.



- No onward chain
- Newly refurbished
- Town centre location
- FREEHOLD
- Private garden
- Two double bedrooms
- Integrated appliances
- Cash back intensive in place!

## ENERGY EFFICIENCY RATING

Energy Efficiency Rating		Current	Potential
<i>Very energy efficient - lower running costs</i>			
(92+)	<b>A</b>		
(81-91)	<b>B</b>		
(69-80)	<b>C</b>		
(55-68)	<b>D</b>		<b>65</b>
(39-54)	<b>E</b>	<b>47</b>	
(21-38)	<b>F</b>		
(1-20)	<b>G</b>		
<i>Not energy efficient - higher running costs</i>			
<b>England, Scotland &amp; Wales</b>		EU Directive 2002/91/EC	

