

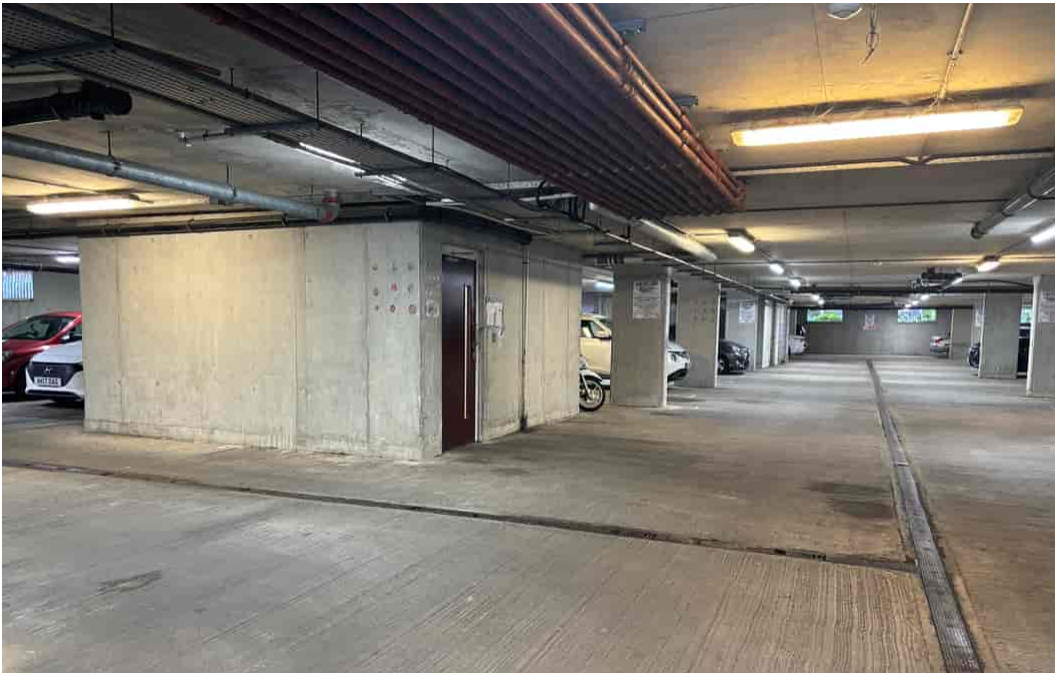


Jupiter Court, Cameron Crescent, Edgware. HA8 0FN

**£399,950
Leasehold**



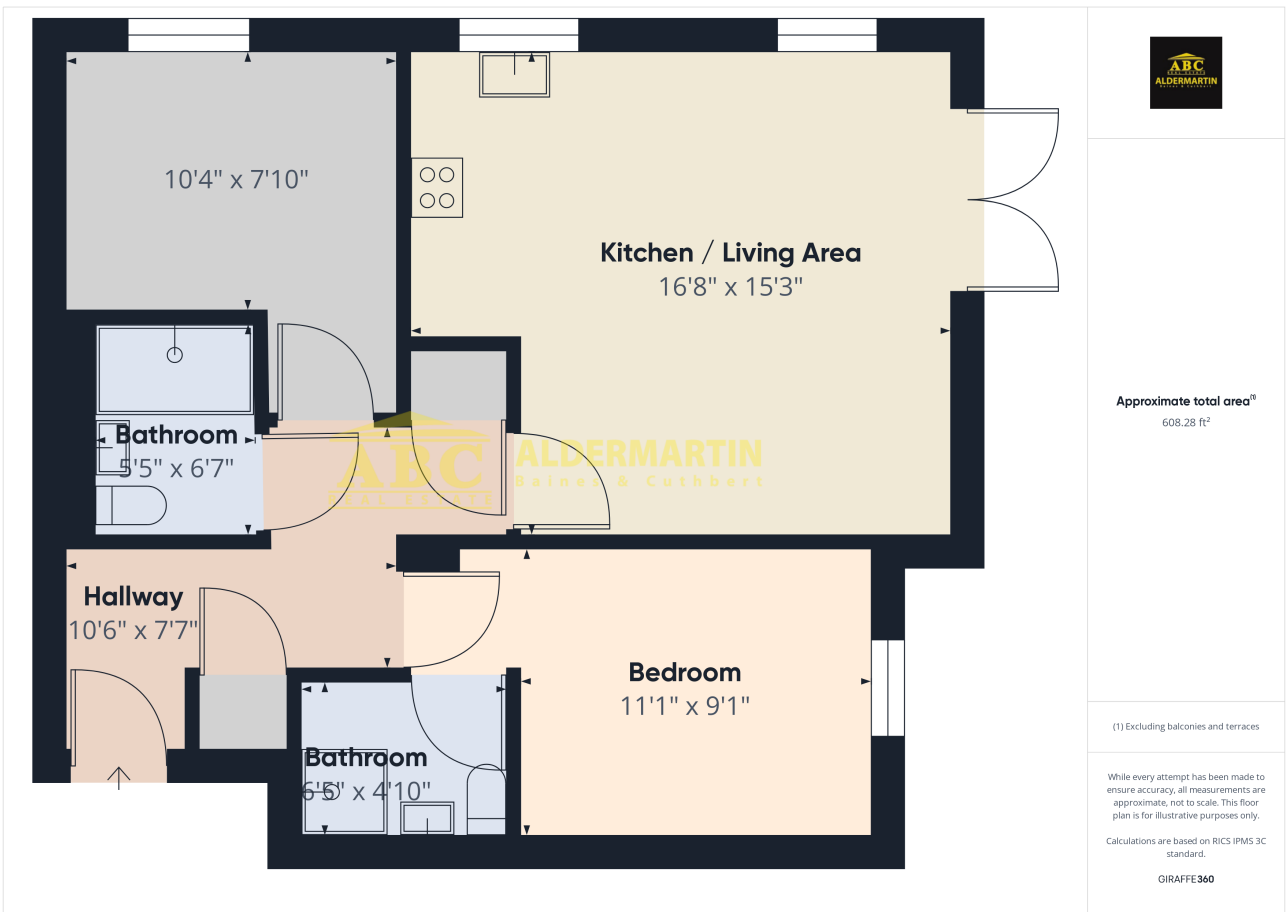




- COUNCIL TAX BAND D: EPC TBC
- BALCONY
- SPACIOUS TWO BEDROOM FLAT

- TWO DOUBLE BEDROOMS
- COMMUNAL GARDENS
- GROUND FLOOR

- BATHROOM + EN SUITE SHOWER ROOM
- CLOSE TO SHOPS AND TRANSPORT



This spacious two bedroom ground floor flat is in very good decorative condition, and is ideally located for local shops, restaurants, schools, transport links, and places of worship.

It comprises two double bedrooms, an en-suite shower room plus a family bathroom, a large reception room which is open to a fitted kitchen area, a balcony overlooking the communal gardens, (which also has a children's' play area) and plenty of storage.

There is a walkway at the rear of the gardens which is floodlit at night, and leads through to Watling Avenue, very close to Burnt Oak Northern Line tube station.

LEASE: 110 years.

SERVICE CHARGES: £2,500 including Ground Rent.



Edgware
02086 214 000
office@abcestates.co.uk

