



**Blenheim Road,**  
Bickley, Kent. BR1 2EX

Tenure: Freehold

5 Bedrooms | 2 Reception Rooms | 2 Bathrooms



A delightful Edwardian semi-detached house which has been enlarged to provide generous five bedroomed accommodation and is set in this sought after residential road within close proximity of Bickley Station. Offered in our opinion in excellent order throughout, this attractive home has many period features and benefits from four double bedrooms, separate living and dining rooms, utility room, two bathrooms, a ground floor cloak room and boasts a secluded southerly rear garden. We highly recommend your earliest possible viewing. EXCLUSIVE TO GEORGE PROCTOR & PARTNERS.

EPC Rating: D

Enquiries To:

T: 020 8467 2252

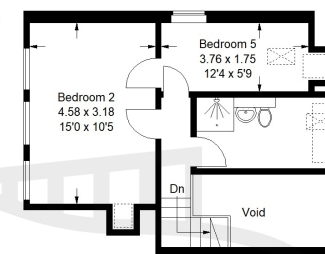
E: [beosales@georgeproctor.com](mailto:beosales@georgeproctor.com)



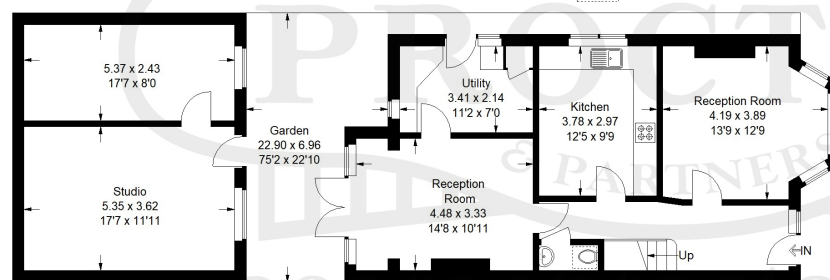
The Bickley Estate Office

Southborough Road, Bickley, Kent, BR1 2EB

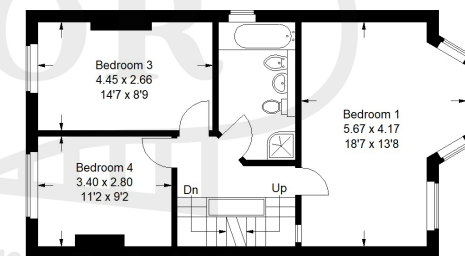
Approximate Gross Internal Area (Excluding Void) = 149.8 sq m / 1613 sq ft  
Limited Use Area = 1 sq m / 11 sq ft  
Outbuilding = 33.1 sq m / 357 sq ft  
Total = 183.9 sq m / 1981 sq ft



Second Floor



Ground Floor



First Floor

These particulars whilst believed to be accurate are made without responsibility on the part of the vendor or agents, their accuracy is not guaranteed nor do they form part of any contract and no warranty is given. Services or appliances have not been tested and no guarantee can be given as to their operation, buyers should seek professional advice where necessary. All measurements are approximate and may be rounded to the nearest three inches (10 cm). Floor plans, where shown, are indicative only. Any photographs included may be taken with the use of a wide angle lens. If there is a matter of particular interest please contact us for further information, especially before travelling any distance to view. Map reproduced by permission of Geographers A-Z Map Co Ltd. Licence No. A0514. This map is based upon Ordnance Survey maps with the permission of the controller of Her Majesty's Stationary Office.