



Icknield Way, £650,000 - FREEHOLD
Letchworth Garden City – SG6 4AR



Satchells





The Property

Modern and energy-efficient three bedroom detached family home in a prime Letchworth location. Ideally situated just a short stroll from Letchworth town center and the mainline station, this stylish and thoughtfully extended three-bedroom detached property combines comfort, convenience, and sustainability in equal measure.

Boasting a host of recent upgrades, including a new roof and guttering, external and cavity wall insulation, a whole-house ventilation system, and solar panels with a storage battery, this home is designed with energy efficiency and modern living in mind.

Inside, the property welcomes you with a bright entrance hall leading into a spacious dining room with charming bay window, seamlessly open plan to the contemporary integrated kitchen—perfect for everyday family life and entertaining. A separate utility room and cloakroom sit just off the kitchen, which also provides direct access to the rear garden. The living room is a relaxing retreat, offering lovely views of the garden and direct access to the raised decking area, ideal for outdoor dining or enjoying the sunshine.

Upstairs, there are two generous double bedrooms and a well-proportioned single room, all served by a large, modern family bathroom.

With its central location, sustainable features, and spacious layout, this property offers a rare opportunity to enjoy a modern lifestyle in one of Letchworth's most convenient and sought-after areas.



About Letchworth

Letchworth Garden City is a truly special place—steeped in history yet beautifully attuned to modern living. As the world's first Garden City, it was founded in the early 20th century as a visionary blend of town and country, and that legacy of thoughtful planning, green spaces, and community spirit continues to define Letchworth today.

Located in North Hertfordshire, just 30 minutes by train to London King's Cross, Letchworth offers the perfect balance of convenience and calm. Its tree-lined streets, extensive parks, and wide open green spaces make it a haven for outdoor enthusiasts and families alike, while its vibrant town centre boasts independent shops, cafés, restaurants, and cultural attractions, including the historic Broadway Cinema and the Garden City Heritage Museum.

Letchworth is also home to excellent schools, strong transport links via road and rail, and a thriving local community. Whether you're enjoying a weekend stroll through Norton Common, browsing a local farmers' market, or commuting with ease into the city, Letchworth provides a lifestyle that's both peaceful and connected.

With its unique charm, rich history, and forward-thinking approach to sustainability and quality of life, Letchworth Garden City remains one of Hertfordshire's most desirable places to live.







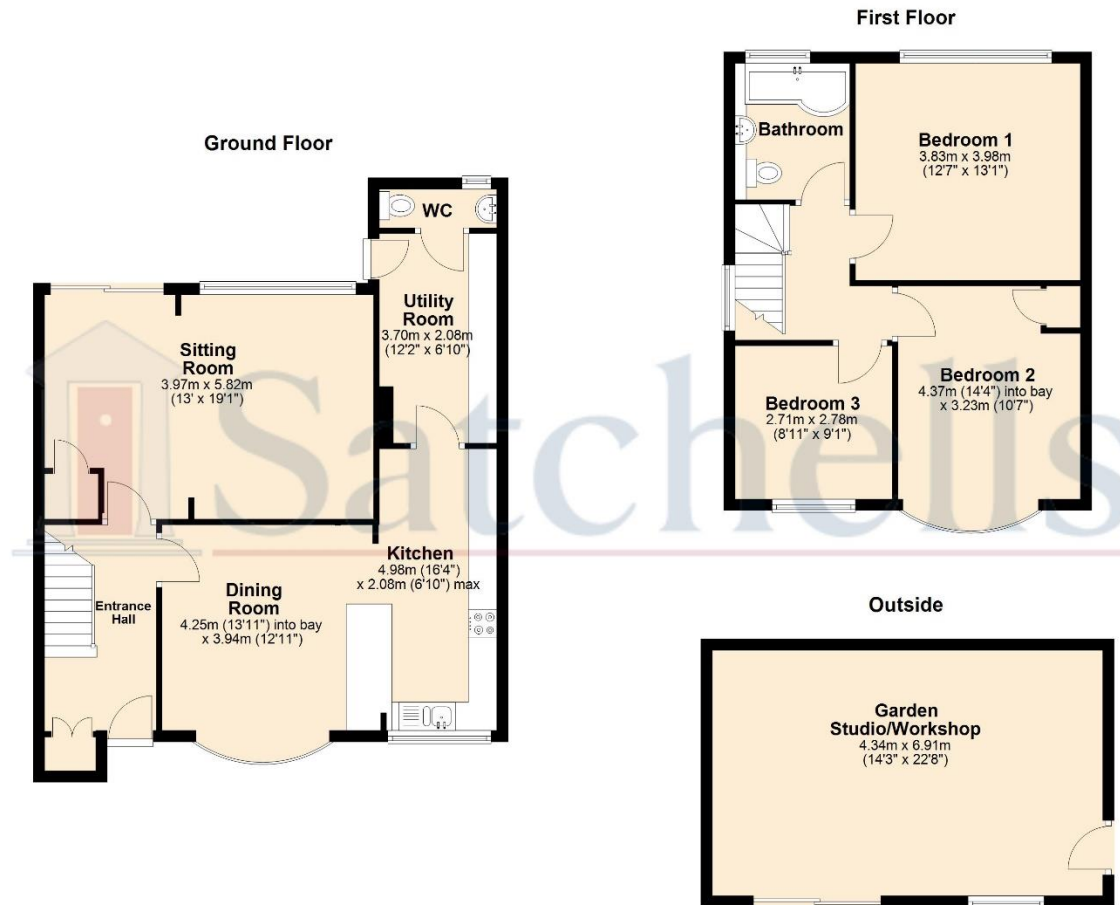
Step outside

The garden is a true highlight of the property—generously sized and enjoying a sunny, private position, ideal for relaxing or entertaining throughout the year. Immediately to the rear of the home, a raised decking area provides a perfect spot for al fresco dining, complete with a charming koi pond that adds a peaceful, tranquil touch to the space.

Steps lead down to a large lawn with pebbled borders, offering plenty of room for children to play or for gardening enthusiasts to enjoy. The garden is fully enclosed with stylish composite fencing, ensuring both privacy and low maintenance.

At the rear of the garden, you'll find a fantastic garden room—a versatile space that could be used as a home office, gym, or studio. This thoughtfully landscaped garden offers the perfect blend of form and function, making it a wonderful extension of the home.





For illustrative purposes only - NOT TO SCALE - Measurements shown are approximate. The size and position of doors, windows, appliances and other features are approximate.
Plan produced using PlanUp.



Satchells
Station Place, Letchworth Garden City, Hertfordshire, SG6 3AQ.
Tel: +44 (0)1462 480077
E mail: letchworth@satchells.co.uk www.satchells.com

