



5 Heigham Court, Stanford in the Vale
Oxfordshire, Offers in Excess of £500,000

Waymark

Heigham Court, Faringdon SN7 8FE

Oxfordshire

Freehold

Four Bedroom Detached Family Home | Master Bedroom Complete With En-Suite And Fitted Wardrobes | Three Reception Rooms | Off Street Parking & Garage | Quiet & Peaceful Cul-De-Sac Position | Sought After & Popular Village Location

Description

A fantastic opportunity to purchase this stunning four bedroom detached family home situated in a cul-de-sac in the ever popular village of Stanford in the Vale. The property offers flexible accommodation with integral garage and a conservatory, now boasting three reception rooms.

The accommodation comprises; Entrance hall, w/c, dual aspect sitting room with large bay window and gas fireplace, bright and airy kitchen, utility room with rear access to the garden, integral garage, dining room, conservatory offering flexible accommodation, family bathroom, and four bedrooms with the master bedroom complete with en-suite shower room and built in wardrobes.

Externally, the property is found at the end of a private and quiet cul-de-sac and offers a generous back garden laid primarily to lawn with a patio walkways and seating area, as well as side access leading round to the front. And to the front, the property boasts driveway parking for two cars and is ideal for an EV charging point.

The property is freehold and is connected to mains gas, electricity, water and drainage. This property must be viewed to be fully appreciated.

Location

Stanford in the Vale is a popular and thriving Downland village situated in the Vale of the White Horse. Situated midway between the market towns of Wantage (6 miles) and Faringdon (5 miles), easily accessible from the A417, the village has an array of amenities with a pub, church, Co-op convenience store, Post Office, Primary School, Pre-school and village hall. Both Wantage and Faringdon offer a comprehensive range of shopping, leisure and recreational facilities. There is a wide selection of both state and private schools within the locality including Radley College, Abingdon School, St Helen & St Katherine and St Hugh's together with well-regarded comprehensive schools at Wantage and Faringdon.

Viewing Information

By appointment only please.

Local Authority

Vale of White Horse District Council

Tax Band: E

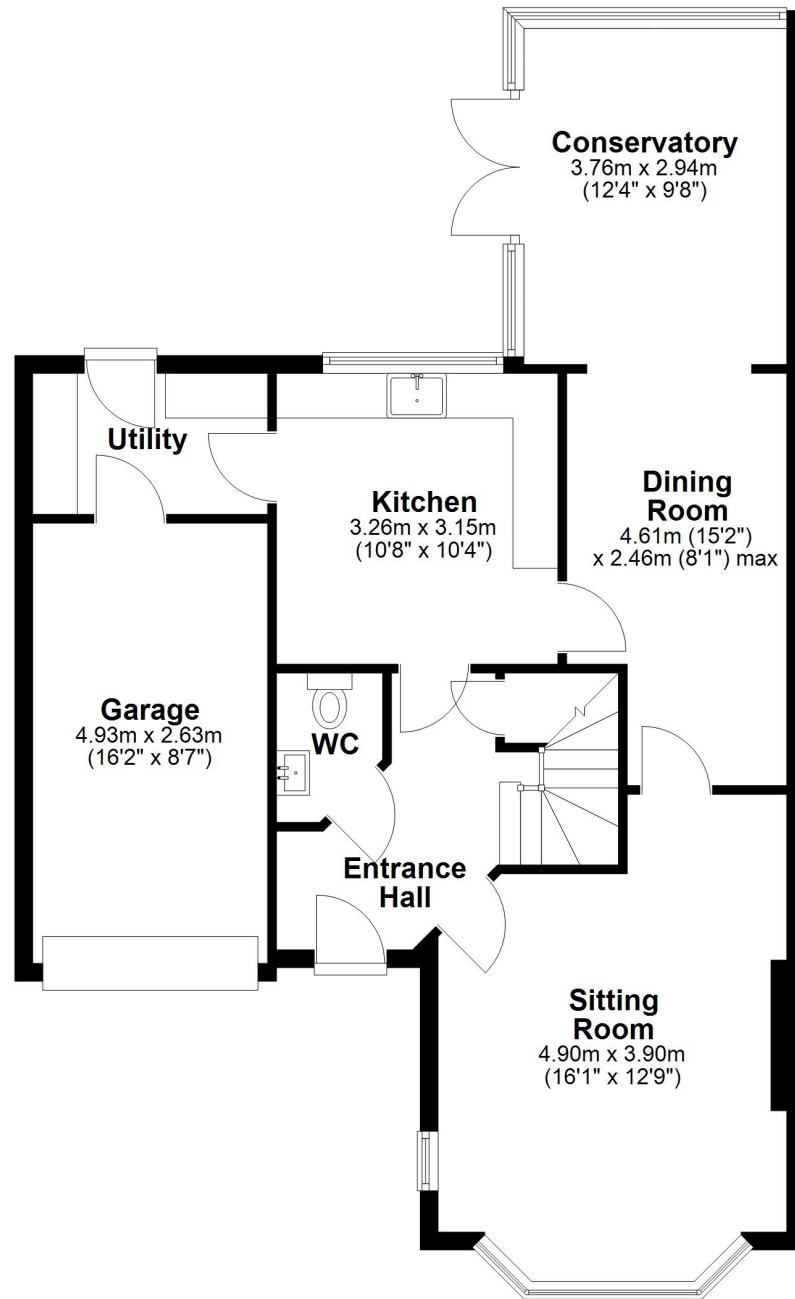


Waymark
Faringdon Office

T: 01367 820070
E: farindon@waymarkproperty.co.uk

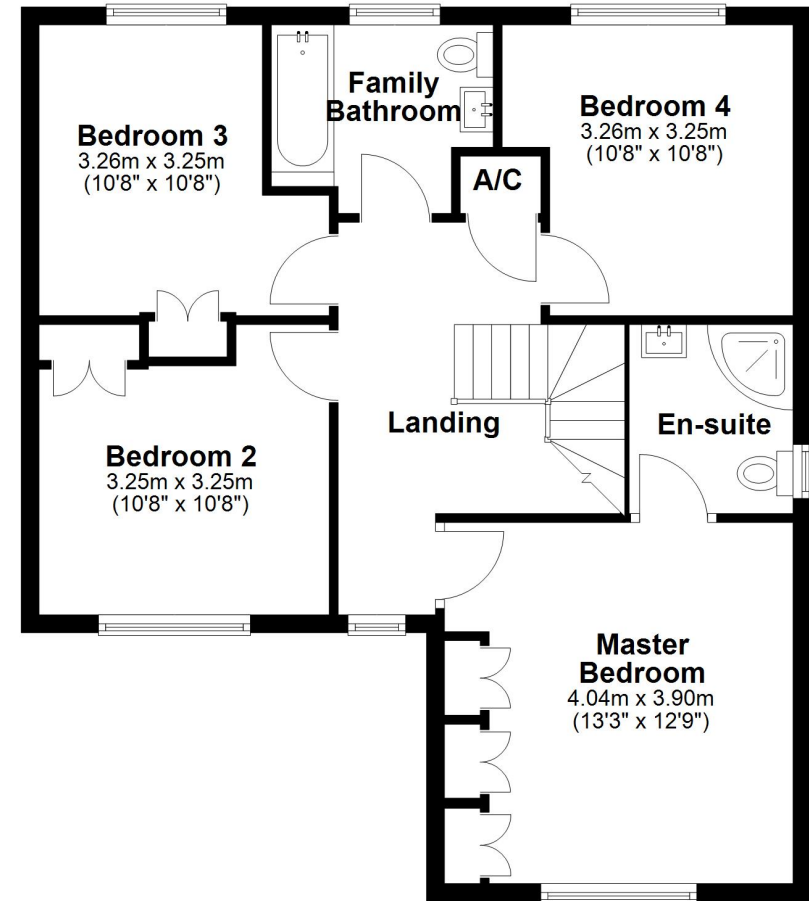
Ground Floor

Approx. 78.9 sq. metres (849.5 sq. feet)



First Floor

Approx. 67.4 sq. metres (725.5 sq. feet)



Total area: approx. 146.3 sq. metres (1575.0 sq. feet)

Important Notice: These Particulars have been prepared for prospective purchasers for guidance only. They do not form part of an offer or contract. Whilst some descriptions are obviously subjective and information is given in good faith, they should not be relied upon as statements or representative of fact.

