

# FOR SALE

---

Sutton Court Road,  
Turnham Green, W4

---

Semi-Detached House  
Turnham Green

---

£2,950,000 fh

---

5  2  2 

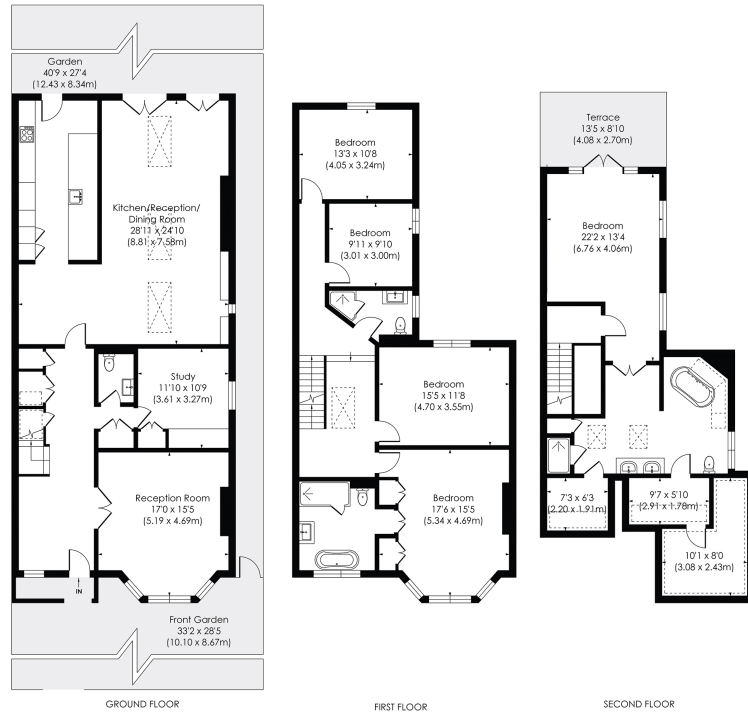


**horton  
andgarton**

SALES / LETTINGS / PROPERTY MANAGEMENT

hortonandgarton.co.uk | Sales 020 3989 6464 | Lettings 020 3989 5454  
161 Chiswick High Road, London, W4 2DT





Edwardian semi detached house | 3109 Sq' - 288.84 SqM | Five bedrooms - Three bathrooms | Superbly presented throughout | EPC rating C | Turnham Green



hortonandgarton.co.uk  
Sales 020 3989 6464  
Lettings 020 3989 5454

161 Chiswick High Road, London, W4 2DT



© Pixangle Property Marketing Ltd. info@pixangle.com Tel: 0208 870 2118

This floor plan has been prepared for the purpose of illustration only in accordance with the latest RICS code of measuring practice and is not to scale. All measurements and areas are approximate and whilst every effort has been made to ensure the accuracy of the plan contained here, no responsibility is taken for any error, omission or misstatement.