



Palmer Close, Redhill, RH1

HOUND & PORTER  
FIND A HOUSE. MAKE IT HOME



Palmer Close, Redhill, RH1



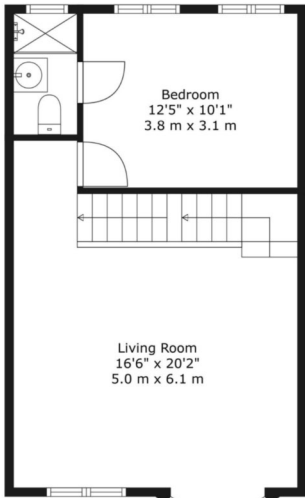
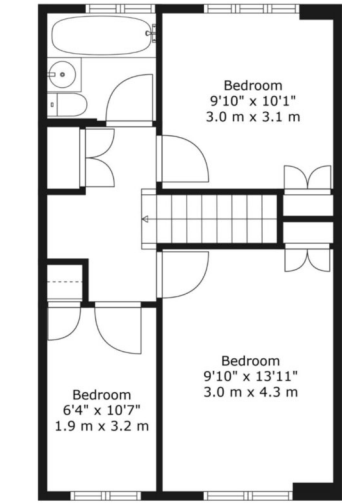
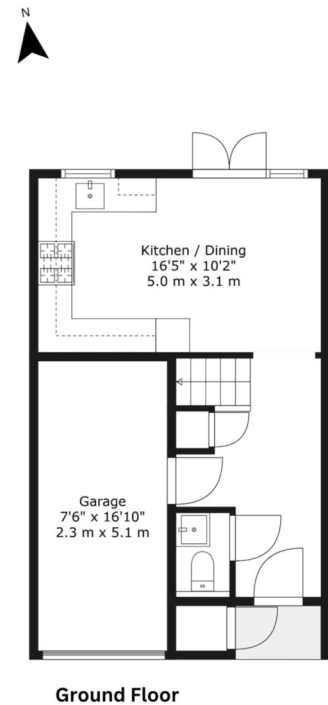
- Close to Redhill & Earlswood station
- Landscaped garden with beautiful green views
- 4 Bedroom Town House
- Intergal garage
- Quiet cul-de-sac location
- Private driveway
- Family bathroom plus bedroom with en-suit

Palmer Close, Redhill, RH1

Palmer Close, RH1

Approximate Gross Internal Area:  
**1193 sq ft / 111m2**  
(Excluding Garage and Bay Window)

For illustration purposes only

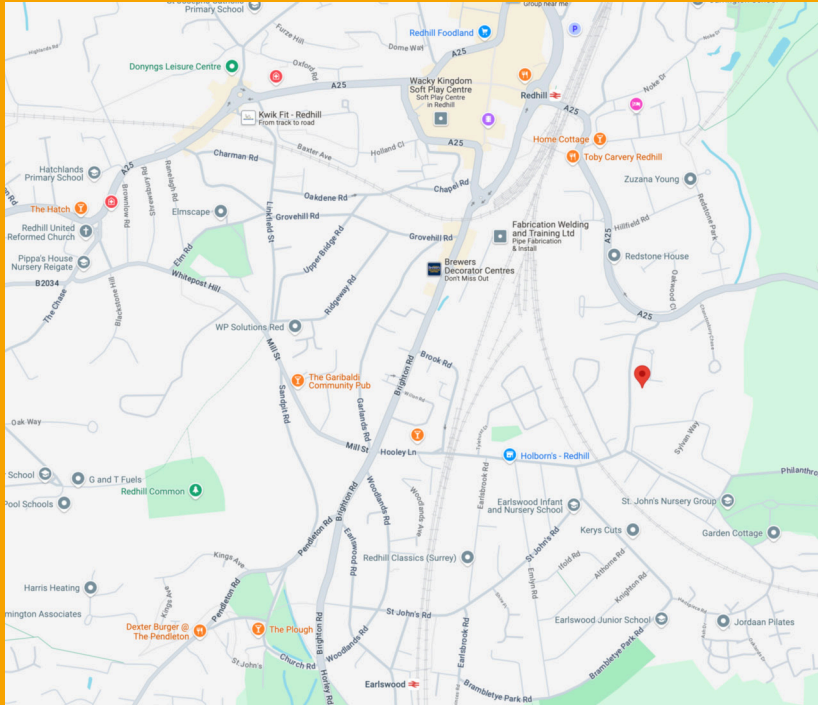


This four bedroom home is nestled away in a very popular cul de sac, just on the edge of Redhill town centre. Tucked away, but with all the benefits and convenience that Redhill has to offer, Palmer Close really is a fabulous spot! Arranged over three floors, this wonderful property offers very flexible accommodation. The kitchen / diner, with doors straight out on to a private landscaped level garden which offers lovely green views and is a wonderful space to put those culinary skills to the test! On the first floor is a beautifully light and bright generous size lounge, spanning the whole width of the house.

On the first floor is a beautifully light and bright generous size lounge, spanning the whole width of the house. Across the landing you will find a double bedroom with ensuite shower room. Head on up to the top floor where you will find 3 further bedrooms and family bathroom. Off road parking for 2-3 cars, and the integral garage, really do add to many reasons why you should come along and have a peek at this exceptional home!



## Palmer Close, Redhill, RH1



### LOCATION

This lovely property is located just outside Redhill, with its excellent train links to London and the South Coast. Local amenities include recently opened entertainment complex The Light, Donyngs Leisure Center, The Belfry Shopping Centre and the Harlequin Theatre. Memorial Park and Earlswood lakes are only a brisk walk away. A short drive brings you to the market town of Reigate brimming with boutique shops, cafes and restaurants, Priory Park offers lovely dog walks and a central children's play area is accompanied by a lovely little café.

### ADDITIONAL INFORMATION

Within easy reach of the, A25, M23, M25 and Gatwick Airport A bus service providing access to Redhill, Reigate and north of the M25 DISTANCE TO STATIONS FROM PROPERTY BY ROAD • 0.6 miles to Redhill Station • 0.8 miles to Earlswood Station. Council tax band: E, £2859.20 PA



### DID YOU LIKE WHAT YOU'VE JUST SEEN?

Get in touch. We are more than happy to arrange a viewing, assist you with the complicated paperwork and find you the best local businesses to help during and after your move. We look forward to hearing from you.

58 Castle Walk  
Reigate, Surrey  
RH2 9PX

01737 317880  
hello@houndandporter.co.uk