

PAUL ALEXANDER
MORTGAGE CONSULTANTS

For all insurance and mortgage needs,
please call Paul Alexander Mortgage Consultants
on 020 8997 3915

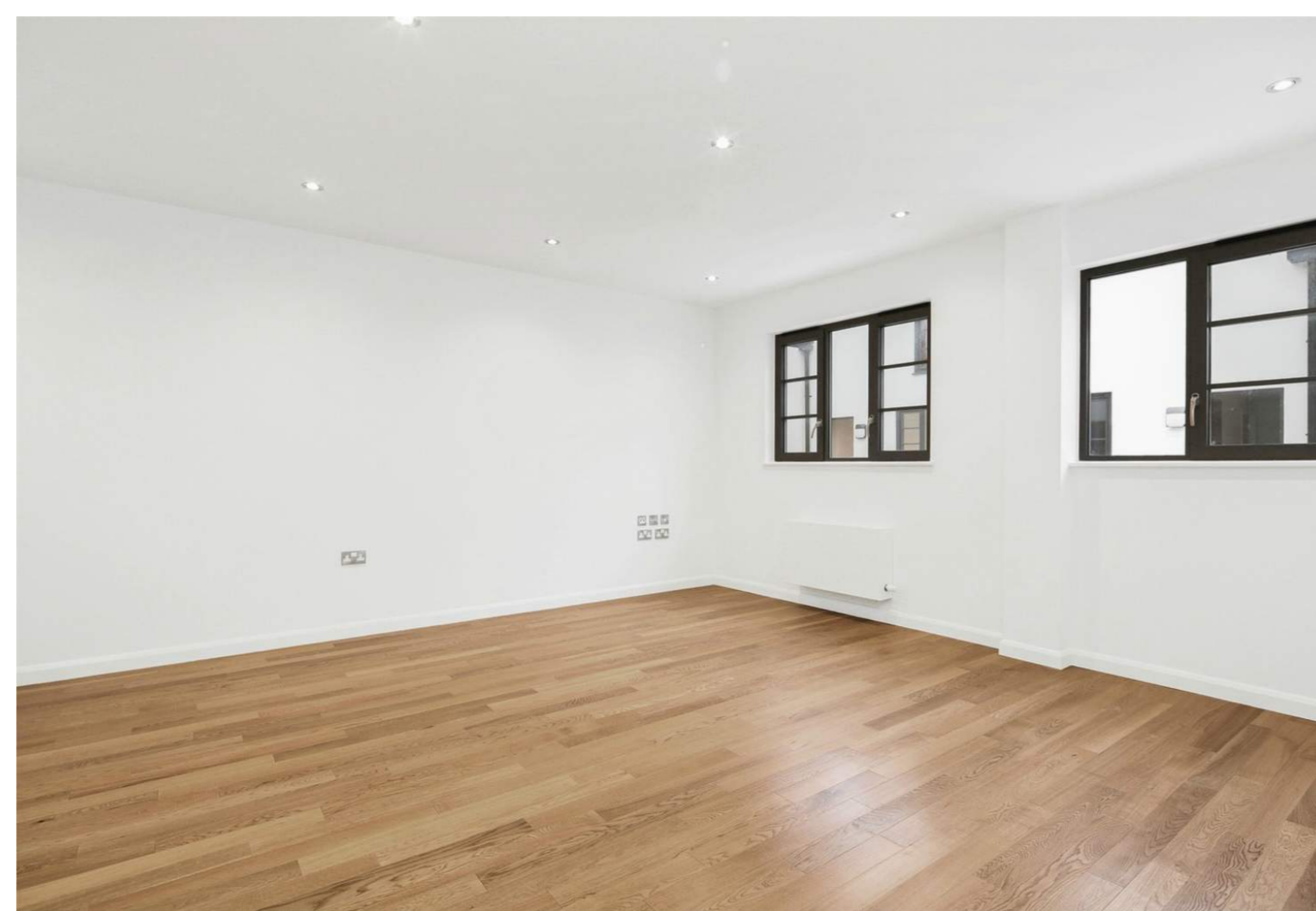
LONDON'S LOCAL AGENT
enquiries@orchardsoflondon.com
020 3962 6000 | orchardsoflondon.com
Westworld West Gate London W5 1DT

4 WARPLE WAY

£1,800 pcm

- Two bedroom apartment
- Ground floor
- Two bathrooms
- Spacious and bright living accommodation throughout
- Fully integrated modern kitchen
- Close to public transport
- Ample storage opportunities
- Wooden Flooring
- Furnished / Unfurnished

LONDON'S LOCAL AGENT
enquiries@orchardsoflondon.com
020 3962 6000 | orchardsoflondon.com
Westworld West Gate London W5 1DT

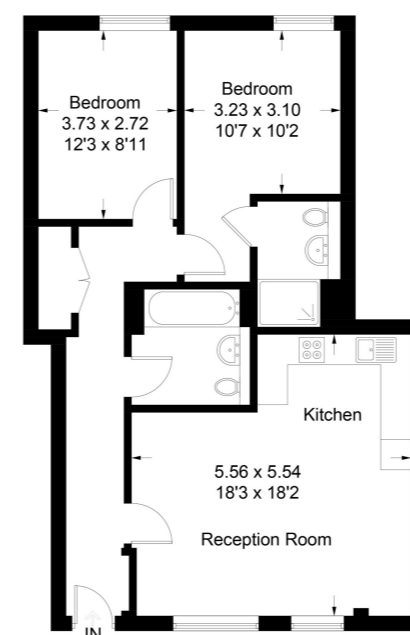


A fantastic opportunity to live in a spacious, newly renovated two bedroom apartment set in a dynamic residential development in the heart of Acton. This stunning property boasts a spacious and bright reception room that merges into the modern integrated kitchen area. Furthermore there is two vast double bedrooms with fitted wardrobes. The Tech West development features contemporary layouts with characterful features retained from the original warehouse conversion such as open plan design, exposed brickwork, steel columns and beams. The apartment is finished to the highest specification with a spacious kitchen, a bright and elegant bathroom and stylish, modern open plan living areas in which you can relax and entertain. Tech West House is conveniently located to take

advantage of the rest of London, with a myriad of transport options in walking distance of the development. Public transport is soon to become even better with Crossrail operating from Acton Main Line by 2018, with connections to the City in under 15 minutes.

Tech West Lofts, W3

Approximate Gross Internal Area = 74.7 sq m / 804 sq ft



Measured in accordance with RICS Code of Measuring Practice. To be used for identification and guidance purposes only. Whilst every care is taken in the preparation of this plan, please check all dimensions, shapes and compass bearings before making any decisions reliant upon them. www.london58.com © 2017 hello@london58.com