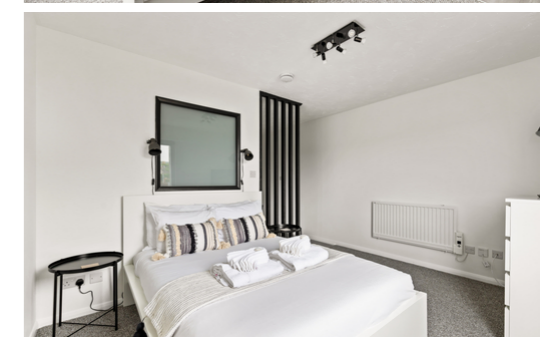


Eastcliffe Heights Flat 13 Radnor Bridge Road

Folkestone
CT20 1RS

£110,000 LEASEHOLD

DRAFT DETAILS....FOR SALE WITH BURNAP + ABEL.... Burnap and Abel are delighted to introduce this studio apartment located in Folkestone's East end. This property is in excellent condition and comprises of a large bedroom, kitchen/dining room and a separate shower room. Additional benefits include double glazing, electric heating and being sold Chain free. For your chance to view call Burnap and Abel now on 01303 258590.



Bedroom

12' 3" x 9' 5" (3.73m x 2.87m)

Kitchen/dining room

12' 2" x 9' 10" (3.71m x 3.00m)

Shower room

8' 9" x 5' 1" (2.67m x 1.55m)

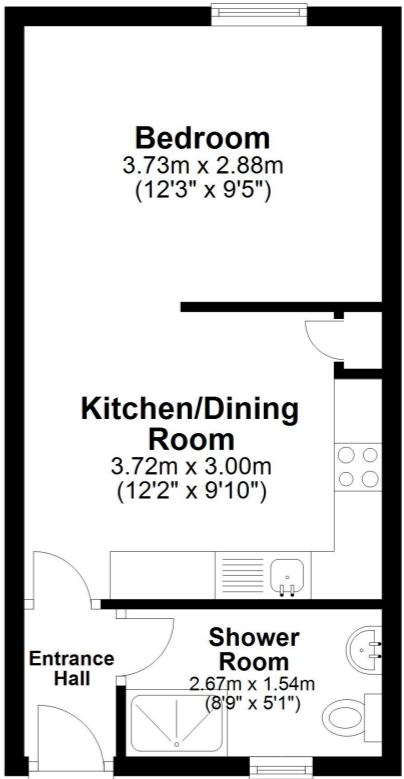
Lease Information:

125 Years from 1992

£100 PA Ground rent

£720 PA Maintenance

Second Floor
Approx. 28.4 sq. metres (305.6 sq. feet)



Total area: approx. 28.4 sq. metres (305.6 sq. feet)

Whilst every attempt has been made to ensure the accuracy of the floor plan contained here, measurements of doors, windows, rooms and any other items are approximate and no responsibility is taken for any error, omission or mis-statement. This plan is for illustrative purposes only and should be used as such by any prospective purchaser. Plan produced using PlanUp.

