



**Middle Street
Trimingham
Norwich
Norfolk
NR11 8EB**

Offers In Excess Of £275,000

bettermove

Middle Street Norwich

Bettermove are proud to present this 2 bedroom terraced house in Trimmingham available with no forward chain

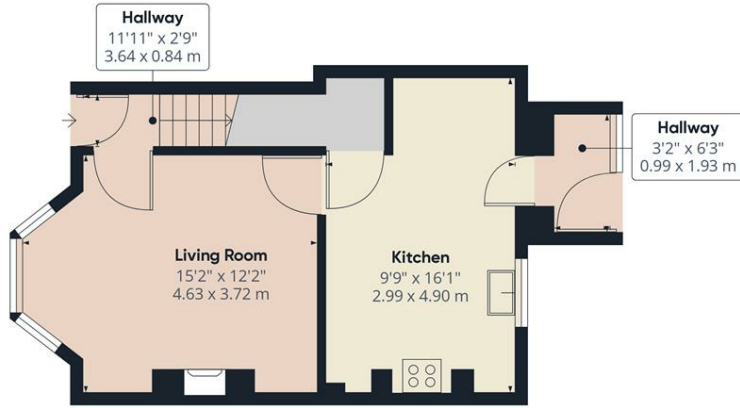
The property benefits from double glazing, gas central heating throughout and has off street parking available.

The interior of this beautifully presented property comprises a spacious living room and fitted kitchen on the ground floor. The first floor consists of 2 bedrooms and the family bathroom. The exterior boasts a private rear garden, perfect for enjoying the summer months.

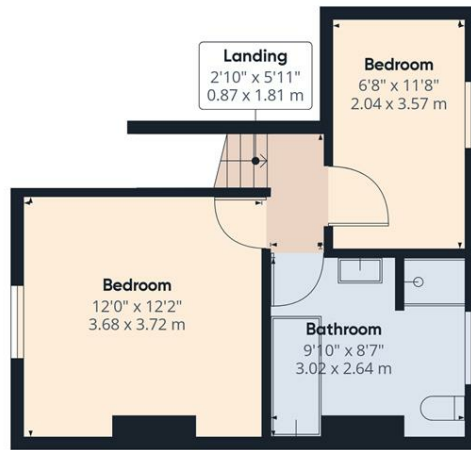
Located in the popular coastal village of Trimmingham, the property is close to a range of amenities, including shops, supermarkets, restaurants and pubs. Excellent transport connections can be found from the A140 and local bus routes.

This exciting opportunity should not be missed! All enquiries can be made through Bettermove on 0330 004 0050.





Ground Floor



Floor 1

Approximate total area⁽¹⁾
 705.19 ft²
 65.51 m²

(1) Excluding balconies and terraces

While every attempt has been made to ensure accuracy, all measurements are approximate, not to scale. This floor plan is for illustrative purposes only.

GIRAFFE360



20-22 Bridge End, Leeds, LS1 4DJ
t: 0330 004 0050 e: hello@bettermove.co.uk
www.bettermove.co.uk