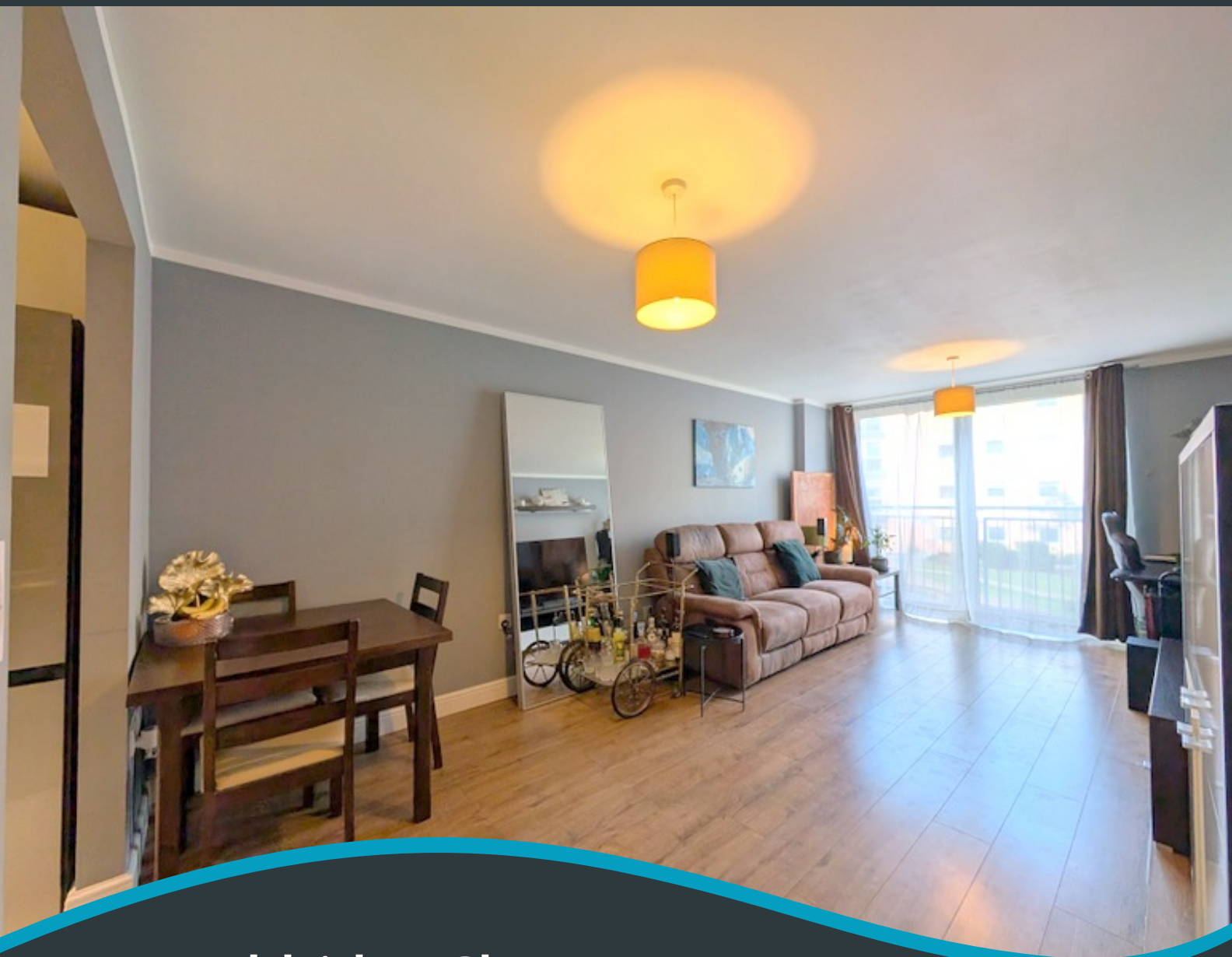


TO LET

£1,400 pcm



17 Wooldridge Close, Feltham, Greater London. TW14 8BF

- Entrance Hall
- Spacious Lounge/ Diner
- Stylish Kitchen
- Large Bedroom
- Modern Bathroom
- Ample Storage Space
- Underground Allocated Parking
- Lift Access
- Refurbished 2021
- Highly Recommended



PROPERTY DESCRIPTION

One of the most luxurious and well finished properties in Wooldridge Close. Conveniently located in a popular residential block, just across the way from Bedfont Lakes and easy access to Hatton Cross Underground Station and Heathrow Airport. Offered to the rental market with an allocated underground parking space, lift access. Available from the 1st April 2025 a 6/12 month renewable unfurnished basis.



ROOM DESCRIPTIONS

Entrance

Approached via a front aspect composite door, laminate flooring, two large built in storage cupboards and an airing cupboard housing the hot water tank. Modern composite doors to all rooms.

Lounge/ Diner

3.73m x 5.95m (12' 3" x 19' 6") Rear aspect double glazed tilt and turn doors with Juliette balcony, laminate flooring, wall mounted electric radiator, ample space for lounge and dining room furniture and entryway to;

Kitchen

2.55m x 1.67m (8' 4" x 5' 6") A modern range of eye and base level units with integrated drainage sink, oven, electric hob and extractor fan with space for fridge/ freezer, washing machine and dishwasher. Laminate flooring and tiled splash backs.

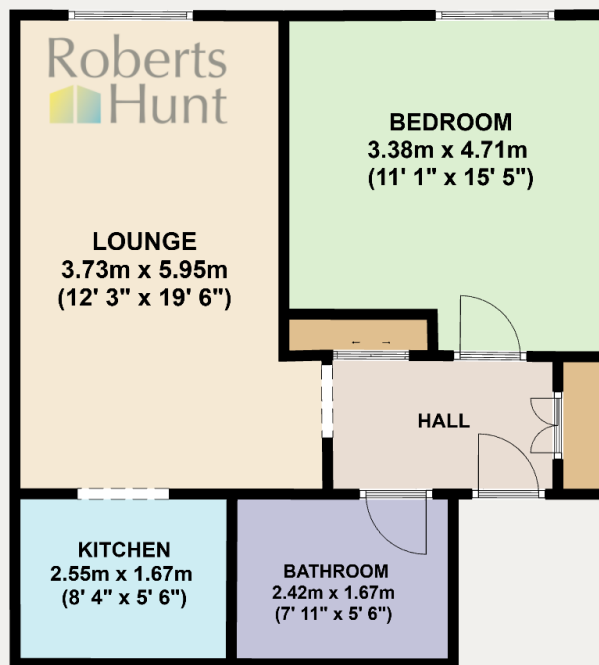
Bedroom

3.38m x 4.71m (11' 1" x 15' 5") Rear aspect double glazed tilt and turn window, laminate flooring and wall mounted electric radiator.

Bathroom

2.42m x 1.67m (7' 11" x 5' 6") Bath with shower attachment, low level WC and pedestal wash basin vanity, extractor fan and tiled flooring and walls.





Energy Efficiency Rating		
	Current	Potential
Very energy efficient - lower running costs		
(92+) A		
(81-91) B	85	86
(69-80) C		
(55-68) D		
(39-54) E		
(21-38) F		
(1-20) G		
Not energy efficient - higher running costs		
England, Scotland & Wales		
	EU Directive 2002/91/EC	