



**UNDER
OFFER**



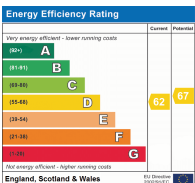
Brownlow Road, London NW10 9QN

*** 2 BED STUNNER ***

Mischa & Co are proud to present this bright 2 bedroom Edwardian maisonette, which comes in fantastic decorative order throughout. The property briefly comprises a well-proportioned open plan kitchen/diner, 2 decent-sized bedrooms, and a modern 3-piece bathroom. Local amenities, such as shops and transport links including Harlseden Station (Bakerloo & Overground), are within a short walking distance. Currently being sold on a chain-free basis.

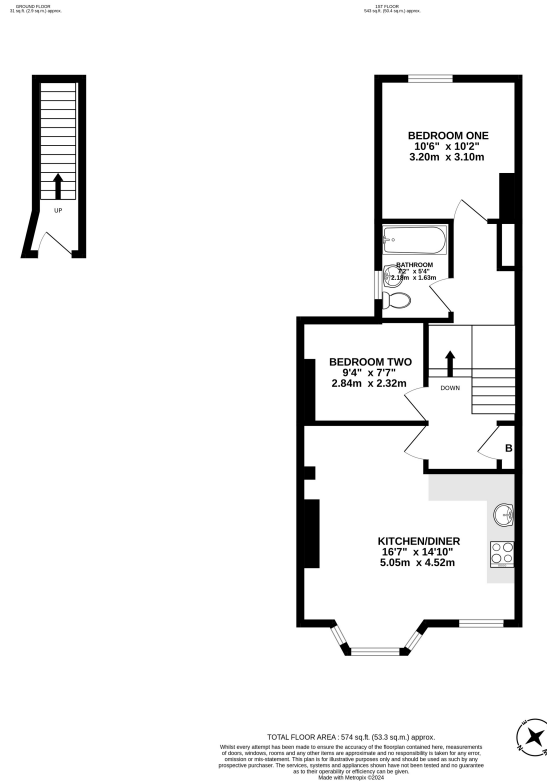
Council Tax Band B (Brent) and EPC rating D (62).

Lease Term 114 years remaining.



£325,000 Leasehold

Floorplan



NB: Please note that all fittings, kitchen appliances and heating systems have not been tested by Mishca & Co Sales & Lettings. Whilst we endeavour to make our sales details accurate and reliable. Room sizes should not be relied upon for carpets and furnishings. If there is any point, which is of particular important to you, please contact our office and we will be pleased to verify any information for you. Do so particularly if contemplating travelling some distance to view this property.

