



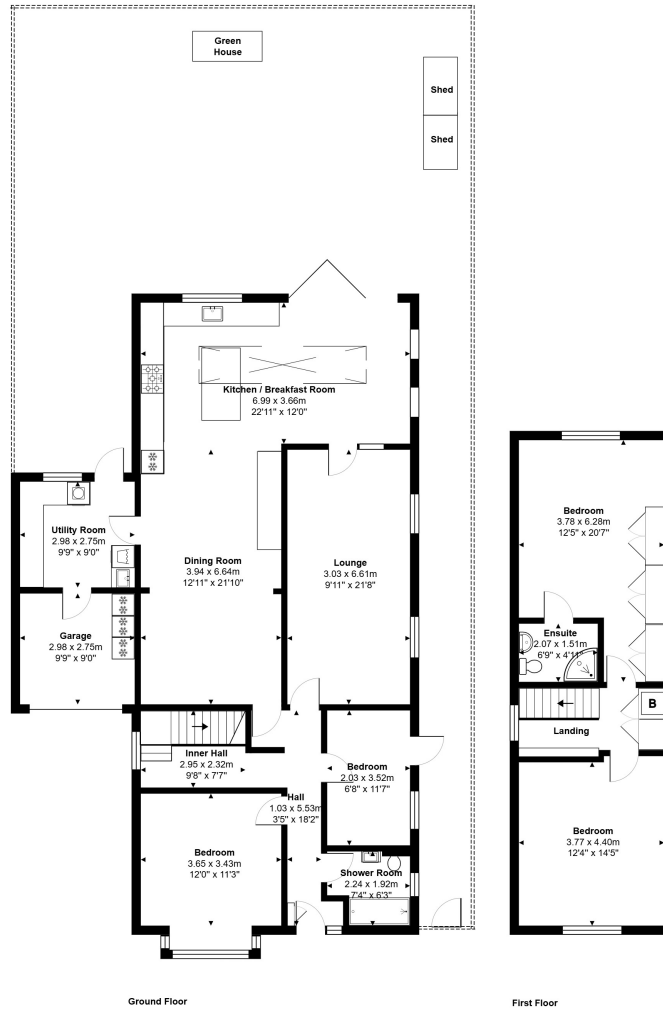
## **Staines Road, Staines-upon-Thames, Surrey, TW18 2SF**

HUGELY SPACIOUS FOUR BEDROOM DETACHED PROPERTY OFFERING FLEXIBLE ACCOMODATION THROUGHOUT, SITUATED ALONG THIS MUCH SOUGHT AFTER ROAD IDEALLY POSITIONED FOR EASY ACCESS TO STAINES TOWN CENTRE, MAINLINE TRAIN STATION, LOCAL SHOPS & SCHOOLS. The property benefits from a spacious kitchen/diner/family room, separate utility, lounge, downstairs W.C/shower room, four well-proportioned bedrooms (en-suite to Bed 1), large secluded rear garden, extensive off-street parking and garage storage. Viewings Highly Recommended!

## ROOM DESCRIPTIONS

---

# FLOORPLAN



Total Area: 180.2 m<sup>2</sup> ... 1939 ft<sup>2</sup>

All measurements are approximate and for display purposes only.

127a, High Street, Staines-upon-Thames, TW18 4PD

01784 451458

staines@gregory-brown.co.uk