



Asking Price £240,000 Leasehold



14 Byron Drive, Northumberland Heath
DA8 1YD



PROPERTY DESCRIPTION

OPEN HOUSE • Saturday 23 September • RE/MAX SELECT are delighted to offer for sale this spacious 2 bedroom flat, close to transportation links, and Northumberland Heath town centre shops and amenities.

This property comprises 2 DOUBLE bedrooms, fitted kitchen, living room, dining area, and bathroom. Further benefits include double glazing and allocated parking. Total Internal Area approx: 582.11 sq ft (54.08 sq m).





ROOM DESCRIPTIONS

First Floor

Hallway

Carpeted, dado rail; storage cupboard housing electric water heater.

Dining Area

Leading to Living room; carpeted, ceiling coving, dado rail, electric radiator, double glazed windows.

Living Room

Leading from Dining Area; carpeted, ceiling coving, dado rail.

Kitchen

Vinyl tiled flooring, double glazed windows; range of wood wall and base units with tiled splashback; composite sink and drainer unit with mixer tap; electric hob, electric oven, extractor fan; space and connections for fridge/freezer; space and plumbing for washing machine.

Bedroom

Carpeted, ceiling coving, electric radiator, double glazed windows.

Bedroom

Carpeted, ceiling coving, electric radiator, double glazed windows.

Bathroom

Vinyl flooring; bath with mixer tap and hand-held shower attachment; wash-hand basin, w/c, heated towel-rail, extractor fan.

Exterior

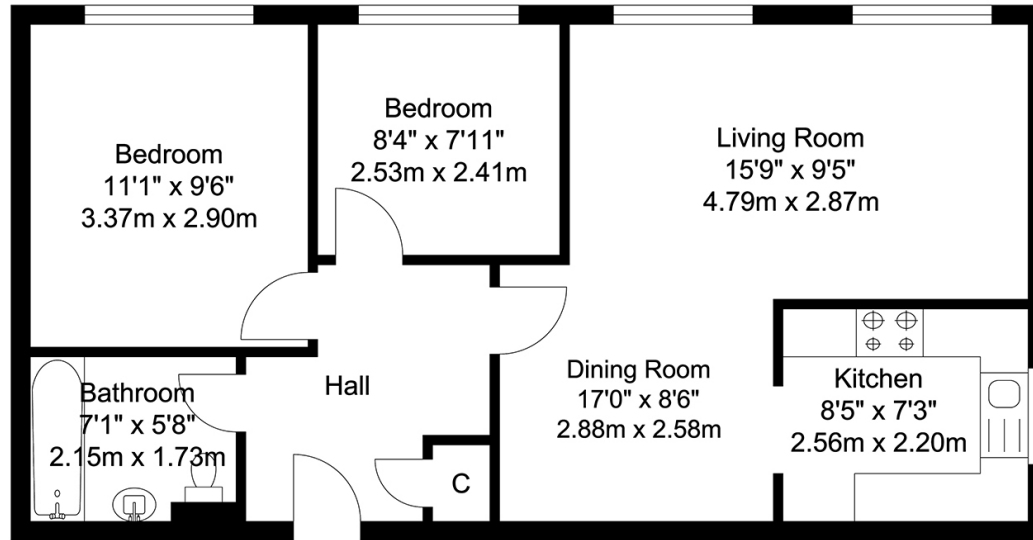
Allocated Parking

Off street parking for one car.

Information

- 0.5 miles (approx) to Barnehurst Station
- 1.0 mile (approx) to Erith Station (2 stops to Crossrail / Elizabeth Line)
- 1.1 miles (approx) to Bexleyheath Station
- Lease remaining: 98 Years
- Ground Rent: £1,728 per annum
- Council Tax: Band B

FLOORPLAN



TOTAL APPROX FLOOR AREA 582.11 SQ. FT / 54.08 SQ. M
For Identification Purposes Only.

