

Maple Grove, Roundswell, BARNSTAPLE

£795 pcm

John
Smale & Co.

Chartered Surveyors | Residential & Commercial Consultants



- Three Bed Detached House
- Utility Room
- Gas Central Heating and Double Glazed
- Enclosed Garden
- STRICTLY NO PETS

- Two Reception Rooms
- Ground Floor W.C
- Garage and Off Road Parking
- Available Mid July

5 Maple Grove, Roundswell, BARNSTAPLE, Devon, EX31 3QP

Three Bedroom Detached house on this popular estate with the benefit of off road parking, garage and garden. The property provides good quality accommodation with entrance hall and downstairs W.C. Lounge, dining room, modern fitted kitchen, utility room and integral garage. Upstairs are three bedrooms and a family bathroom. Good condition with gas central heating and fully double glazing throughout. To the rear of the property is a good sized enclosed garden with lawned area and patio. STRICTLY NO PETS.

Ground Floor

Entrance

Front door into Hallway.

Separate W.C

Lounge

3.56m x 4.05m (11' 8" x 13' 3")

Central gas fire place, wood laminate flooring.

Dining Room

3.04m x 2.69m (10' x 8' 10")

Patio doors to Garden.

Kitchen

2.86m x 2.97m (9' 5" x 9' 9")

Fully fitted Kitchen.

Under-Stair Storage Cupboard

Utility Room

2.38m x 1.92m (7' 10" x 6' 4")

Work top surface and intergraded sink.

Plumbing for washing machine, doorway to Garage and back door leading to Garden.

First Floor

Upstairs to Landing

Airing cupboard housing boiler.

Bedroom One

3.23m x 4.42m (10' 7" x 14' 6")

Bedroom Two

3.36m x 2.66m (11' x 8' 9")

Bedroom Three

2.59m x 2.34m (8' 6" x 7' 8")

Integral store cupboard.

Family Bathroom

1.67m x 2.17m (5' 6" x 7' 1")

Bath with shower over, W.C and sink.

Outside

Small garden to front with off road parking leading up to the Garage: 5.15m x 2.47m (16' 11" x 8' 1")

Enclosed rear garden with patio and lawned area.

Services

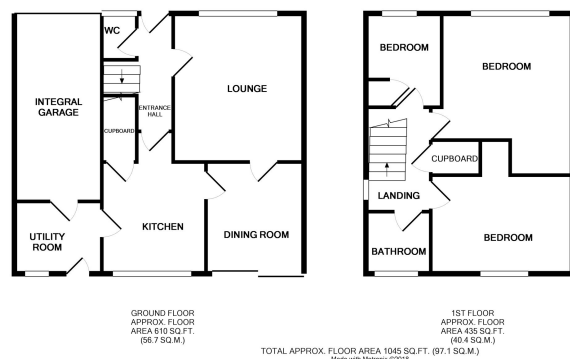
Mains Connected, Gas, Electric and Water.

Council Tax Band: C

EPC rating - D

Directions

Driving down from the Cedars roundabout, when you reach the first roundabout take the first left, then turn left again into Maple Grove and the property is shortly on the left.



At John Smale & Co we don't just sell houses! ...

Contact us now for information on all of our other services including Residential and Commercial Lettings, Property Management, Commercial Property Sales, Probate Valuations, Independent Financial Advice, Energy Performance Certificates, Auctions and New Homes.

These particulars have been prepared for guidance only. We have not carried out a detailed survey, not tested the services, appliances or specific fittings. Floor plans are not drawn to scale unless stated, measurements and distances are approximate only. Do not rely on them for carpets and furnishings. Photographs are not necessarily current and you should not assume that contents shown are included in the sale.

Email: lettings@johnsmale.com Website: www.johnsmale.com

5 Cross Street Barnstaple EX31 1BA

Offices also @ London (Mayfair Office)

Tel: 01271 329345