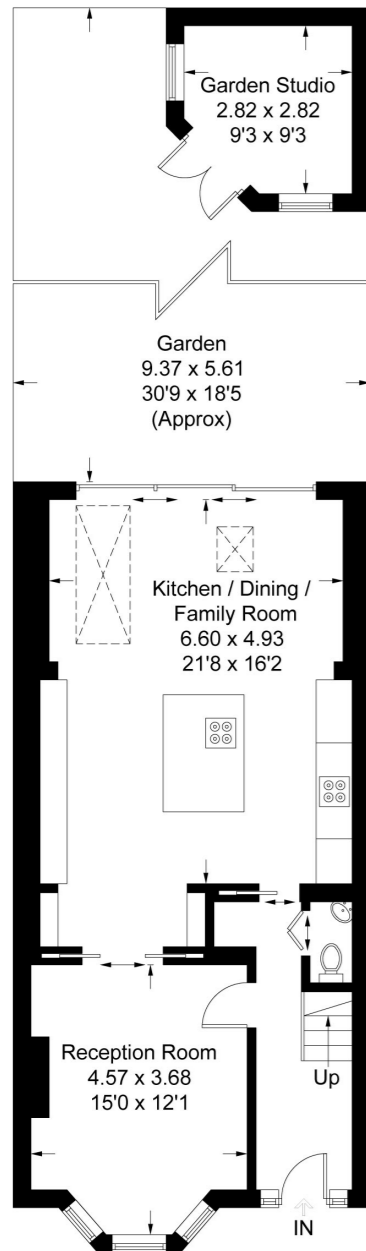
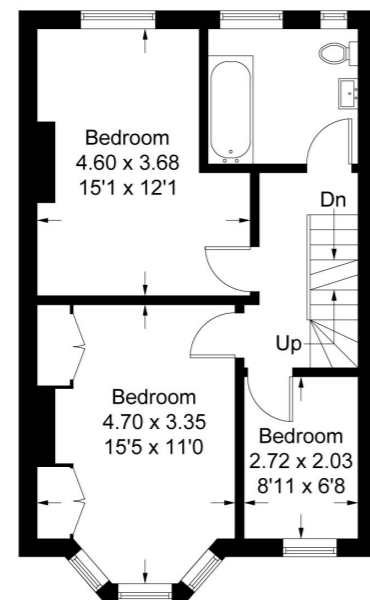


Kingsdown Avenue, W13

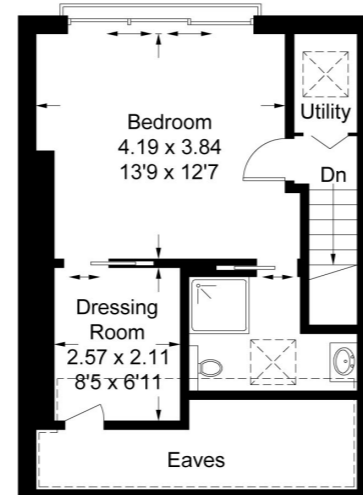
Approximate Gross Internal Area = 154.2 sq m / 1660 sq ft
(Including Eaves / Reduced Headroom)
Eaves / Reduced Headroom = 9.9 sq m / 107 sq ft
Garden Studio = 7.5 sq m / 81 sq ft
Total = 151.8 sq m / 1634 sq ft
(Excluding Eaves / Reduced Headroom)



Ground Floor



First Floor



Second Floor

= Reduced Headroom



4 BEDROOM HOUSE

Kingsdown Avenue, W13

£1,300,000

This flawless Edwardian four bedroom house is located in one of Northfields' most highly coveted roads.

The era of construction is reflected in a magnificent refurbishment which seamlessly mixes period detailing with contemporary style. The result is a fine family home with a fabulous open plan kitchen/ diner leading to the landscaped secluded garden all within moments of Walpole and Lammas parks, Northfields tube station and West Ealing Crossrail.

FEATURES

- Open Plan Ground Floor
- Landscaped South Facing Garden
- Two Luxury Bathrooms
- Close to West Ealing Crossrail
- Dressing Room
- Utility
- Fielding Primary Catchment

Measured in accordance with RICS Code of Measuring Practice. To be used for identification and guidance purposes only. Whilst every care is taken in the preparation of this plan, please check all dimensions, shapes and compass bearings before making any decisions reliant upon them. www.london58.com © 2020 hello@london58.com



4 BEDROOM HOUSE

Kingsdown Avenue, W13

With perfectly balanced open plan living, kitchen and dining space mixed with quieter rooms, including dressing room and utility this fine home is perfect for a growing family.

With Fielding Primary School close by and a high standard of fixtures and fittings throughout, this a turnkey solution for buyers wanting to move straight in.

