

FOR
SALE



Fernlea Cobhall Common, Allensmore, Herefordshire HR2 9BN

£415,000 - Freehold

22, Broad Street, Hereford, HR4 9AP 01432 355455 hereford@flintandcook.co.uk

PROPERTY SUMMARY

Peaceful rural location a superb semi-detached country house, 2/3 bedrooms, luxuriously finished throughout, beautiful landscaped gardens, bespoke garden/office studio. Must be viewed!

POINTS OF INTEREST

- *Peaceful rural location*
- *Luxuriously finished throughout*
- *2/3 Bedroom semi-detached house*
- *Oil central heating & double glazing*
- *Beautiful oriental themed landscaped gardens*
- *Bespoke detached garden office/studio*
- *Must be viewed!*



ROOM DESCRIPTIONS

Double-glazed side entrance door through to the

Reception Hall

Tiled floor, radiator, recessed spotlighting and door to the

Cloakroom/Utility

Tiled floor, floor-mounted oil central heating boiler, recessed spotlighting, retractable clothes line, low flush WC, wash hand-basin, contemporary storage cabinets, window and radiator.

From the Reception Hall, a feature glass door opens through to the

Superb Lounge

Stylishly decorated with tiled floor, 2 upright radiators, multi-fuel stove, recessed spotlighting, range of windows to the side and bespoke staircase to the first floor landing.

Luxury Kitchen/Dining/Family Room

Kitchen area - comprehensively fitted out with a contrasting range of modern and English oak units, 1½ bowl sink unit, ample granite worksurfaces, tiled splashbacks, tiled floor, window overlooking the garden, recessed spotlighting, recycling bins, range of Siemens built-in appliances including induction hob with extractor hood over, upright fridge/freezer, oven and dishwasher, ample wall and base cupboards, contemporary wine-rack. Dining/Family room with tiled floor, radiator, feature brick decorative wall, side window, feature arch window and double doors overlooking the rear garden, range of stylish display cabinets.

A bespoke staircase with glazed side panels leads to the

Impressive first floor landing/Bedroom 3

Currently used as a second lounge with a vaulted ceiling with exposed beams, windows to the side which was originally a separate bedroom and this could easily be divided again to provide a third bedroom with fitted carpet, 2 upright radiators, vaulted ceiling with exposed beams, useful store cupboards, 2 windows to the side.

Bedroom 1

Fitted carpet, radiator, access hatch to loft space, extensive range of fitted oak wardrobes and dressing table, windows to the side and rear enjoying a pleasant outlook.

Bedroom 2

Fitted carpet, fitted drawer unit, radiator, window enjoying an pleasant outlook.

Shower Room

Luxury suite comprising large walk-in shower with rainwater style showerhead over, low flush WC, antique-style wash hand-basin, feature flooring, radiator/towel rail, window to the side with fitted shutters.

Outside

Vehicular access along a lane to the side leads to the double-width brickpaved driveway providing off-road parking facilities with feature gates opening onto a further area, ideal for extra parking and this provides access to the bespoke DETACHED GARDEN OFFICE/STUDIO with power and light points, sink and hot/cold water supply, woodburning stove, windows, wi-fi connection, separate store room and WC to the rear and further store room to the side with range of cabinets. One of the main features of the property is the beautiful oriental themed landscaped garden which has meandering pathways leading down to the property with feature framework with decorative panels, several paved areas ideal for entertaining and all enclosed by fencing and hedging to maintain privacy and really must be seen to be fully appreciated. Extensive range of outside lighting and further bespoke stone-faced garden store with power and light points and log-store to the side.

Services

Mains water and electricity are connected. Private drainage. Telephone (subject to transfer regulations). Oil-fired central heating. Airband full-fibre broadband.

Outgoings

Council tax band C - payable 2023/24 £1927.33

Water rates are payable.

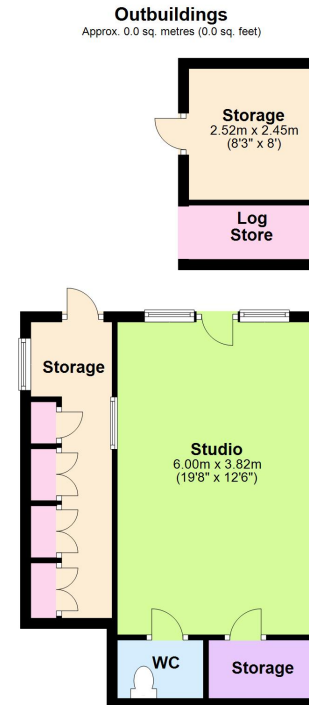
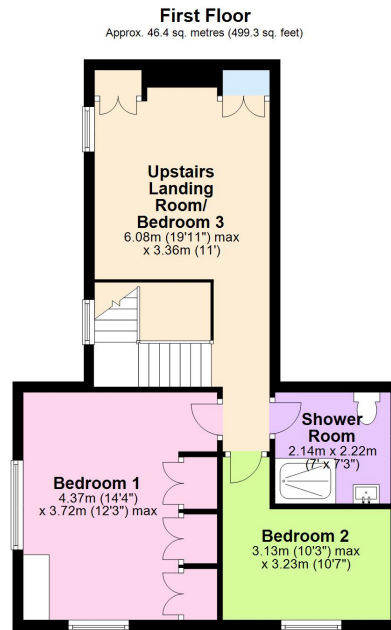
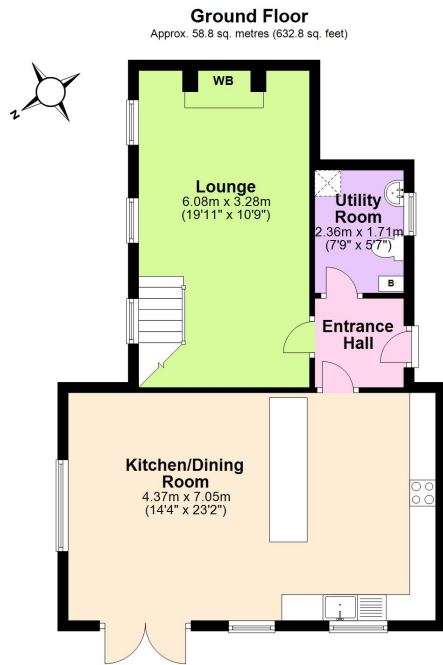
Private drainage.

Money laundering regulations

Prospective purchasers will be asked to produce identification, address verification and proof of funds at the time of making an offer.

What Three Words

///remaking.colleague.lease



Total area: approx. 105.2 sq. metres (1132.1 sq. feet)

These plans are for identification and reference only.
Plan produced using PlanUp.

Fernlea, Cobhallow Common, Hereford

These particulars are prepared for the guidance only of prospective purchasers. They are intended to give a fair and overall description of the property and do not constitute the whole or any part of an offer or contract. Any information contained herein (whether in text, plans or photographs) is given in good faith but should not be relied upon as being a statement or representation of fact. Any plans provided by the agents and/or with the sales particulars are intended for guidance purposes only; we cannot guarantee the accuracy and scale of any plans, and they do not form any part of the sales contract. Nothing in these particulars shall be deemed to be a statement that the property is in good condition or otherwise nor that any services or facilities are in good working order. Any movable contents, fixtures and fittings, (whether wired or not) referred to in these property particulars (including any shown in the photographs) are, unless the particulars say otherwise, excluded from the sale. In the event that the buyer proposes to purchase any movable contents or include them in any offer for the property, the buyer cannot in any respect imply any such inclusion from the property particulars. Any areas, measurements or distances referred to herein are approximate only and may be subject to amendment. It should not be assumed that the property has all necessary planning, building regulation or other consents and these matters must be verified by an intending purchaser. The information in these particulars is given without responsibility on the part of the agents or their clients and neither the agents nor their employees have any authority to make or give any representations or warranties whatever in relation to this property.

Flint & Cook Privacy Statement: We take your privacy very seriously. Your data will not be shared with any other parties without your express permission. Our Data protection Policy can be read in full on the Flint & Cook website, www.flintandcook.co.uk

Energy Efficiency Rating		
	Current	Potential
Very energy efficient - lower running costs		
(92+) A		
(81-91) B		79
(69-80) C		
(55-68) D		
(39-54) E	55	
(21-38) F		
(1-20) G		
Not energy efficient - higher running costs		
England, Scotland & Wales		