



# Harrison Close

Harrison Close | Hitchin | Hertfordshire | SG4 9SG

[www.stonegate-estates.co.uk](http://www.stonegate-estates.co.uk)





# HARRISON CLOSE

---

## Property Description

We are delighted to offer for sale this well placed and much sought after two bedroom second floor retirement apartment. The property offers good sized accommodation along with ample storage and a open plan kitchen/living room.

There is a communal lounge along with a lift to all floors, an inhouse hairdressers and a development manager onsite. A Careline system is placed throughout the apartment and building and the development is well placed for access to the town centre and the mainline train station.

Hitchin town centre provides a broad range of shops and a regular traditional market; together with a good selection of restaurants, bars and pubs within its historic centre. The town also provides a swimming centre, theatres and a library; whilst the commuter is served by the mainline railway station (Kings Cross – 30 minutes) and direct road links to the A1(M).

**£295,000 Leasehold**

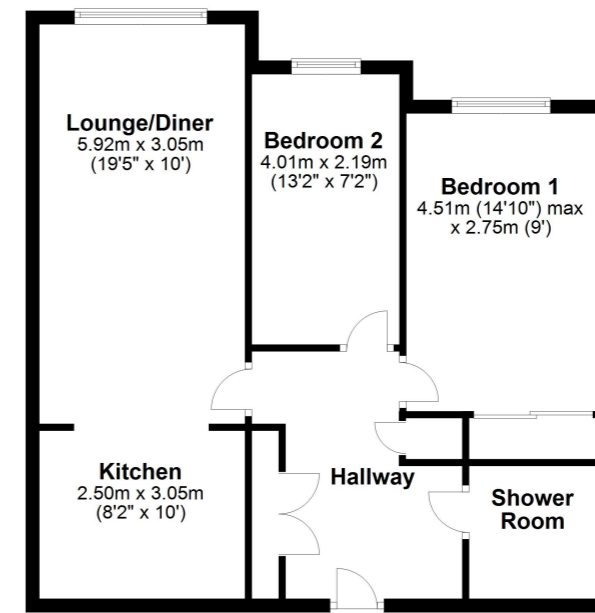






**Floor Plan**

Approx. 64.5 sq. metres (694.7 sq. feet)



Total area: approx. 64.5 sq. metres (694.7 sq. feet)

All measurements shown are approximate and for guidance only. Garages and workshops are not included in any gross floor areas unless integral to the main building where they will be included.  
Plan produced using PlanUp.





- Two Bedroom Retirement Apartment
- Town Centre Location
- Communal Gardens and Parking
- Lift to all Floors
- Development Manager on Site
- Residents Lounge
- Second Floor
- No Chain
- Lease 108 years

EPC Rating:

Stonegate Estate Agents

01462 438979

[sales@stonegate-estates.co.uk](mailto:sales@stonegate-estates.co.uk) | [www.stonegate-estates.co.uk](http://www.stonegate-estates.co.uk)

