



81 High Street, Arlesey, Bedfordshire, SG15 6SW

Guide Price £475,000

Rarely available period and character home, over 1420 sq ft, boasting a large living room with open fireplace, a fitted kitchen & dining space with some white goods, and a patio which opens to a sunny courtyard for Al Fresco dining. There is a 17ft second reception room, ideal for that home office, and a handy cloakroom.

On the first floor the amazing master bedroom has a vaulted ceiling, and three further double bedrooms, plus a modern bathroom suite.

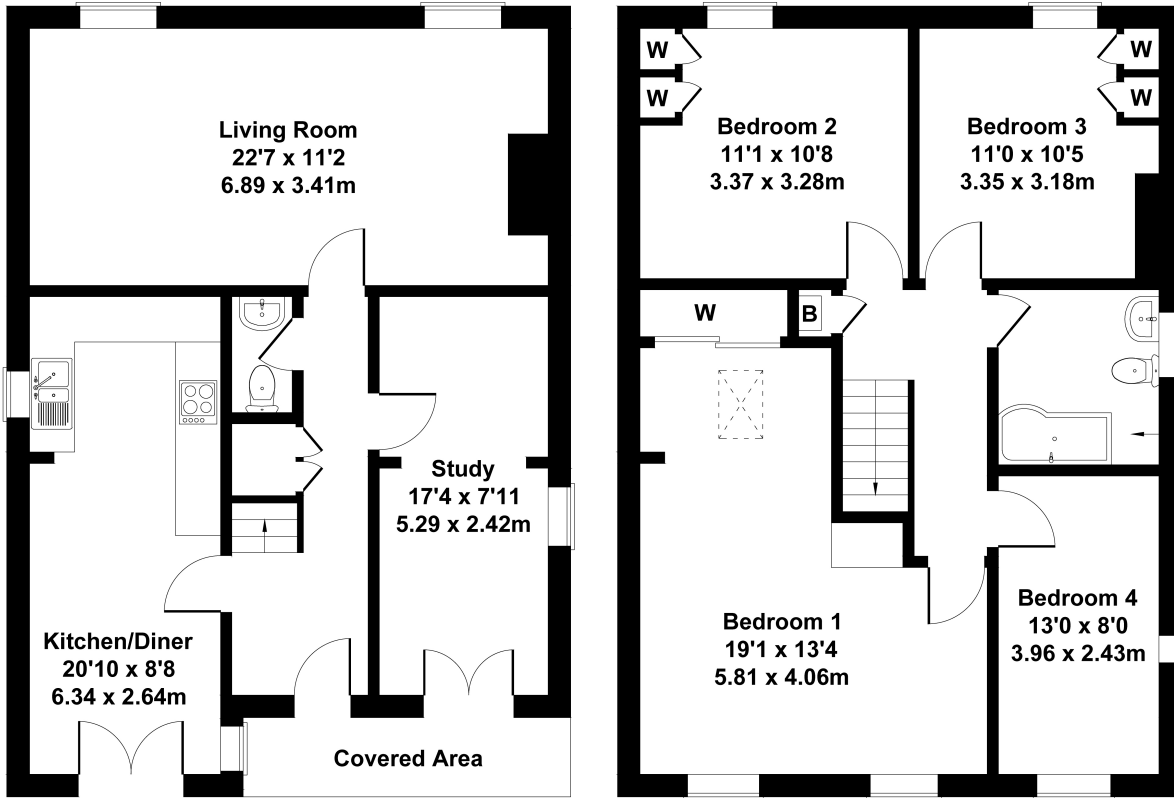
A noteworthy feature of this property is the sizable West facing garden, which also benefits



# 81 High Street, Arlesey, SG15 6SW

Approximate Gross Internal Area  
1421 sq ft - 132 sq m

Bathroom  
8'1 x 8'0  
2.46 x 2.43m



**GROUND FLOOR**

**FIRST FLOOR**

Not to Scale. Produced by The Plan Portal 2022  
For Illustrative Purposes Only.

- LINK DETACHED & EXTENDED CHARACTER HOME
- 4 DOUBLE BEDROOMS
- LARGE LOUNGE WITH FEATURE FIREPLACE
- KITCHEN & DINING SPACE
- WORKSHOP & OUTBUILDINGS
- HOME OFFICE/SECOND RECEPTION
- LARGE WEST FACINNG GARDEN
- CHAIN FREE - MUST BE SEEN
- OPEN DAY - SATURDAY 24TH JUNE - BY APPOINTMENT ONLY

