

# George Close

Somerton, TA11 6DW

COOPER  
AND  
TANNER



**£450,000 Freehold**

Well presented four-bedroom detached house situated in George Close, Keinton Mandeville with no onward chain

# George Close

## Somerton

TA11 6DW

 4  2  2 EPC C

## £450,000 Freehold

### DESCRIPTION

Welcome to this well presented four-bedroom detached house situated in George Close, Keinton Mandeville. Built around 2006, this modern residence offers a great interior layout for comfortable family living, all within a desirable location.

From the moment you step through the front door the entrance hall is decorated well with its modern flooring and neutral décor and this sets the stage for the rest of the home that flows seamlessly from room to room. The spacious living room is bathed in natural light from large windows, providing a bright and airy ambience. This room is ideal for both relaxation and entertaining guests. It features stylish light fixtures, and ample space for various furniture arrangements.

The heart of the home is undoubtedly the up to date kitchen and dining area. The kitchen boasts modern appliances and countertops with ample cabinetry. The open-plan layout extends into a generous dining area, perfect for family meals and guest entertaining.

Upstairs, you will find four well-appointed bedrooms, each offering generous proportions and stylish finishes. The master bedroom features its own en-suite bathroom and ample closet space via fitted wardrobes. The remaining three bedrooms are equally spacious and versatile, perfect for children, guests, or even a home office. The family bathroom is designed with fixtures and fittings including a bathtub, basin and toilet.

The property benefits from an expansive and well-maintained garden, offering a private and peaceful outdoor space. Whether you enjoy gardening, outdoor dining, or simply relaxing in the fresh air, this garden caters to all. Additionally, the property includes a detached garage and ample driveway parking, ensuring convenience and security for your vehicles.

The home is located in the highly desirable village of Keinton Mandeville and offers the best of both worlds – a peaceful residential setting with easy access to local amenities. Keinton Mandeville is renowned for its excellent schools, friendly community, and beautiful surroundings. Residents can enjoy a range of local shops, cafes, and recreational facilities, all within close proximity. The area is well-connected by road and public transport, providing easy access to nearby towns and cities for work or leisure.

This four-bedroom detached house on George Close houses spacious room sizes, well presented interior, and desirable location, it offers everything you need for a comfortable and stylish lifestyle. The property's parking and garage space add to its convenience, making it a perfect choice for families seeking a high-quality home in a prime location.

Don't miss the opportunity to make this stunning property your new home. Contact us today to arrange a viewing and experience the home for yourself.

**TENURE**  
Freehold

**COUNCIL TAX BAND**  
F





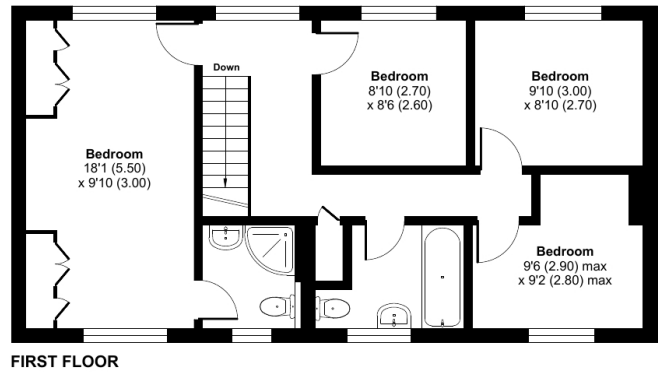
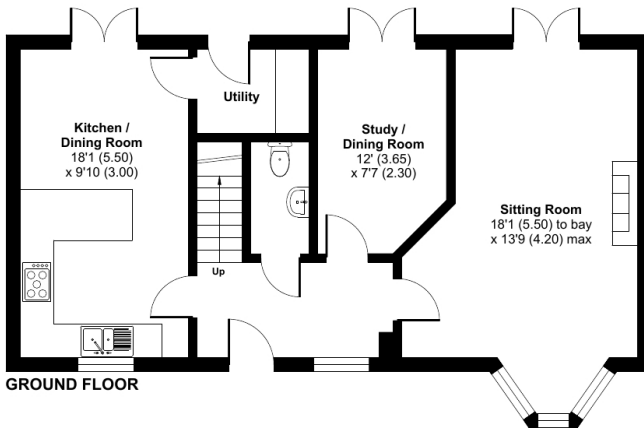
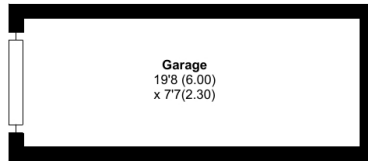
## George Close, Keinton Mandeville, Somerton, TA11

Approximate Area = 1316 sq ft / 122.2 sq m

Garage = 149 sq ft / 13.8 sq m

Total = 1465 sq ft / 136 sq m

For identification only - Not to scale



Floor plan produced in accordance with RICS Property Measurement Standards incorporating International Property Measurement Standards (IPMS2 Residential). © nitchecom 2024. Produced for Cooper and Tanner. REF: 1165759

CASTLE CARY OFFICE

Telephone 01963 350327

Fore Street, Castle Cary, Somerset BA7 7BG

[castlecary@cooperandtanner.co.uk](mailto:castlecary@cooperandtanner.co.uk)

COOPER  
AND  
TANNER

Important Notice: These particulars are set out as a general outline only for the guidance of intended purchasers and do not constitute, nor constitute part of, an offer or contract. All descriptions, dimensions, reference to condition and necessary permissions for use and occupation, warranties and other details are given without responsibility and any intending purchasers should not rely on the m as statements or representations of fact but must satisfy themselves by inspection or otherwise as to the correctness of each of them.

