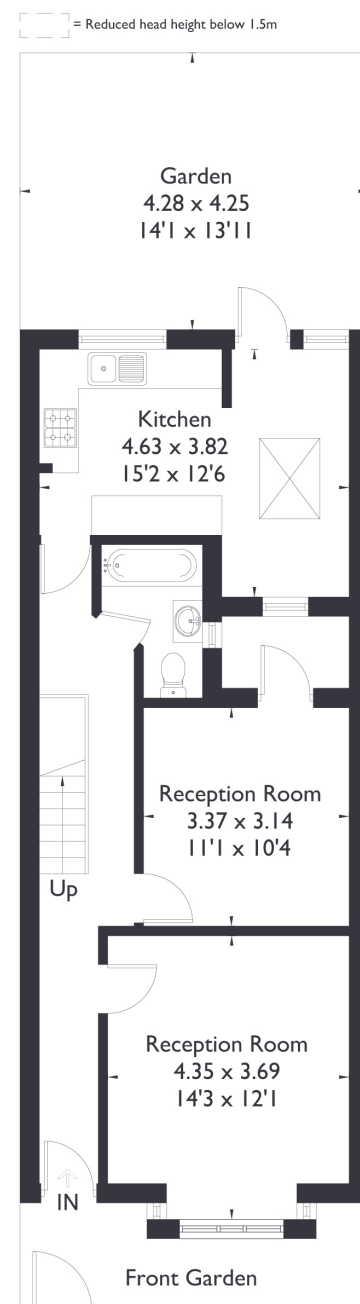
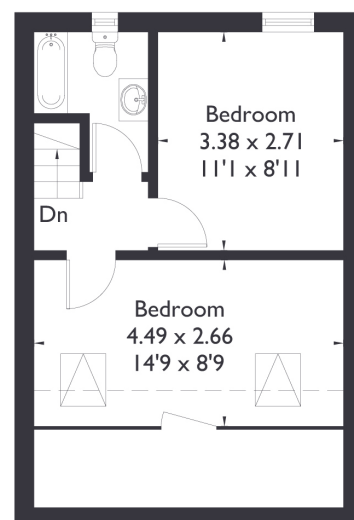


## Bedford Road, W13

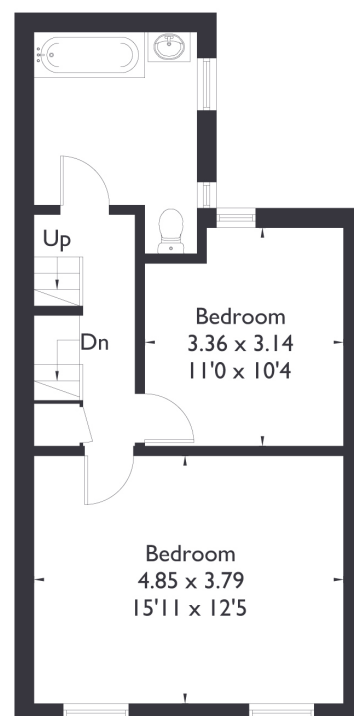
Approximate Floor Area = 135.2 sq m / 1455 sq ft(Including Loft)



Ground Floor



Second Floor



First Floor



### 4 BEDROOM HOUSE

## Bedford Road, W13

£808,250

Welcome to this four bedroom, three bathroom home in the heart of West Ealing. This property offers fantastic potential, featuring two inviting reception rooms and a spacious kitchen with a dedicated dining area.

The first floor boasts two generously sized double bedrooms and a well appointed family bathroom.

### FEATURES

- Four Bedrooms
- Three Bathrooms
- Separate Kitchen & Living Space
- St John's Primary School
- West Ealing Station (Elizabeth Line)
- West Ealing Amenities
- EPC Rating C





#### 4 BEDROOM HOUSE

## Bedford Road, W13

On the top floor, you'll find two additional bedrooms and a convenient shower room, providing ample space for family and guests.

Perfectly situated just a 5 minute walk from West Ealing Station, with access to the Elizabeth Line and a host of local amenities.

This home is also within the sought after catchment area for St. John's Primary School, making it an ideal choice for families.

EPC Rating C.

