

QUEENS COURT

£159,950

Key Features



An End of Terraced Bungalow.



Two Bedrooms.



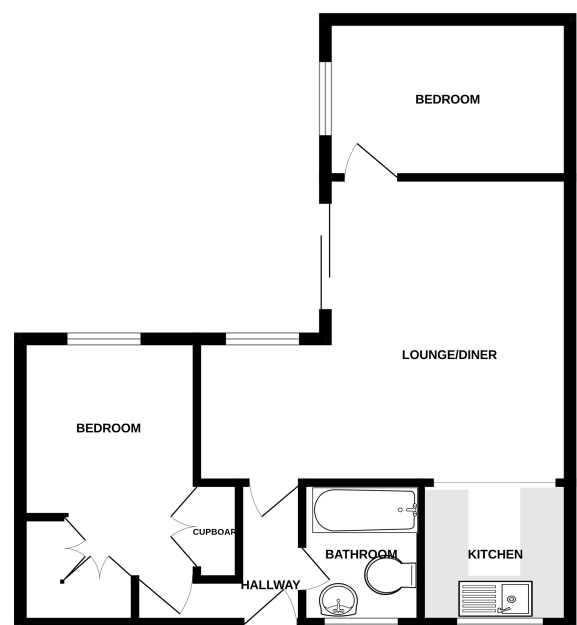
Private Enclosed Courtyard Garden.



No Onward Chain.



GROUND FLOOR
513 sq.ft. (47.7 sq.m.) approx.



TOTAL FLOOR AREA: 513 sq.ft. (47.7 sq.m.) approx.
Made with Metropix ©2023