



WALTON & HIPKISS

Established 1929

Premier Homes

**43 Oakfield Road
Kidderminster DY11 6PL**



43 Oakfield Road is approached via a block paved driveway, with flower boarder and fore garden, driveway has enough space to park two to three cars.

Porch:

Having a double glazed sliding door, ceiling light point, power points, obscure windows, tiled flooring, wooden front door leading into hallway.

Hallway:

Having ceiling light point, radiator, power points, doors leading to lounge, dining room and kitchen, door leading to under stairs storage.

Lounge: 15'08" (max) x 9'10" (max)

Having wooden door, ceiling light point, ample power points, fire and double glazed stained glass window.

Dining Room/ Second Reception Room: 10'08" (max) x 10'11 (max)

Having ceiling light point, power points and chimney breast.

Conservatory: 13'06" (max) x 11'05" (max)

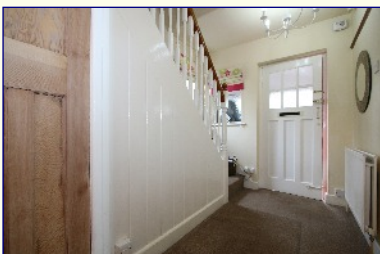
Having laminate flooring, double glazed UPVC double door leading to garden and double glazed UPVC windows.

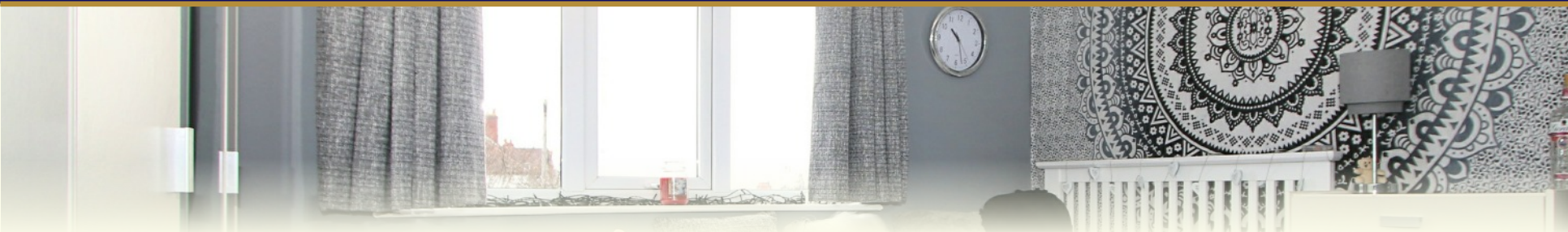
Kitchen: 14'05" (max) x 7'00" (max)

Having bi-folding door leading to kitchen, ceiling light points, power points, wall and base units, roll top work surface, four ring gas hob, double electric oven, two double glazed windows with dual aspect, stainless steel sink unit, tile effect laminate flooring and ceramic tile splash back.

W/C: 4'05" (max) x 2'06" (max)

Having ceiling light point, low level W/C, corner basin with tiled splash back surround.





Storage Cupboard/ Utility:

Having light, power point and washing plumbing point.

Under Stairs Storage:

Having ceiling light point and obscure glazed window.

Stairs/ Landing:

Having wooden balustrade with spindles, obscure window to side elevation, ceiling light point and power points.

Bathroom: 6'04" (max) x 7'09" (max)

Having wooden effect laminate flooring, ceramic tiling to walls as well as wooden cladding to one wall only, low level W/C, wash hand basin, panelled bath with shower over, obscure double glazed window to the rear elevation, airing cupboard housing boiler, loft hatch access, extractor fan, ceiling light points and double radiator to wall.

Master Bedroom: 10'07" (max) x 11'10" (max)

Having ceiling light point, power points, double glazed UPVC window to rear elevation and single radiator to wall.

Bedroom Two: 10'11 (max) x 11'01" (max)

Having ceiling light point, power points, double glazed UPVC window with stain glass to front elevation and radiator to wall.

Bedroom Three: 7'03" (max) x 7'00" (max)

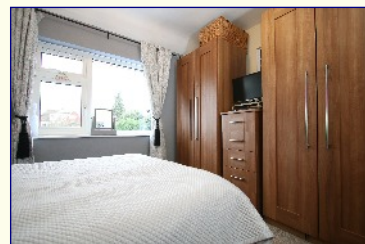
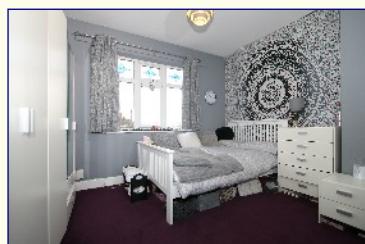
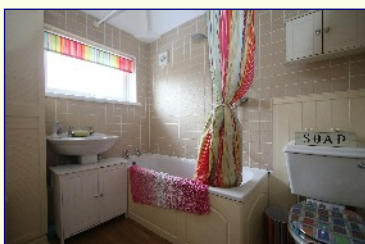
Having ceiling light point, power points, double glazed UPVC window to rear elevation and fitted wardrobe.

Garden:

Having a blocked paved patio area with raised grass area, gravel area to side, gated side access, light point and outside tap.

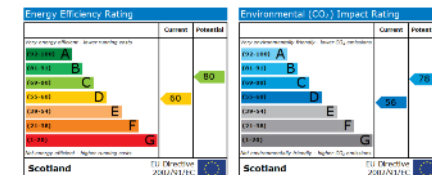
TENURE:

The property is Freehold.





IMPORTANT NOTICE: The floor plan is approximate & not drawn to scale, but is to be used for identification purposes only and does not form part of any contract of sale. All fixtures and fittings, unless specifically mentioned in these sale particulars, are strictly excluded from the sale of this property. These particulars are not to form part of a sale contract and may be subject to errors and/ or omissions therefore prospective purchasers must satisfy themselves by inspection or otherwise as to their correctness. The Agents have not formally verified the property's structural integrity, ownership, tenure, acreage, planning/ building regulations' status, or the availability/ operation of services and/ or appliances. Therefore prospective purchasers are advised to seek validation of all such matters prior to expressing any formal intent to purchase. The property is sold subject to any right of way, public footpaths, easements, wayleaves, covenants, any other issues or planning/ building regulations' matters, which may affect the legal title. Consequently, prospective purchasers are advised to seek validation of all above matters, prior to expressing any formal intent to purchase. The photographs displayed on these particulars and in our offices have been taken with a digital camera. On some photographs a wide-angle lens is used to enable us to show as much detail as possible.



This EPC is available to download from the online details, related to this property at www.waltonandhipkiss.co.uk

HAGLEY **STOURBRIDGE** **KIDDERMINSTER**
01562 886666 01384 392371 01562 519777

Please phone the appropriate telephone number nearest your area, we look forward to your call.

- SALES
- LETTINGS
- COMMERCIAL
- LAND
- NEW HOMES
- SURVEYS

