



37 Owlswood, Sandy, Bedfordshire, SG19 2SL

£375,000

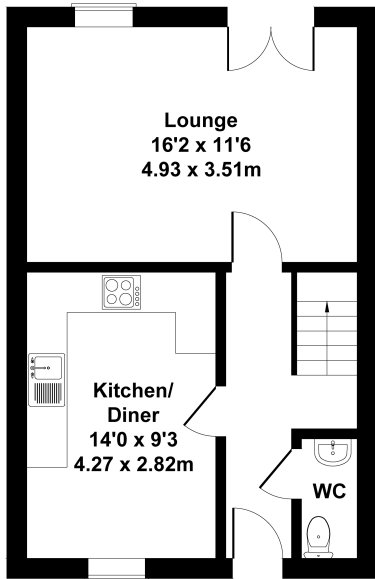
We are delighted to offer for sale this well presented and versatile four bedroom end of terrace town house in a sought after location. The property boasts an impressive master bedroom with en-suite occupying the entire second floor. Accommodation consists of a kitchen/breakfast room with integral appliances, good size lounge with french doors to garden and downstairs cloakroom. There are three further bedrooms and a bathroom on the first floor. Outside is a low maintenance, private rear garden, garage and off road parking.



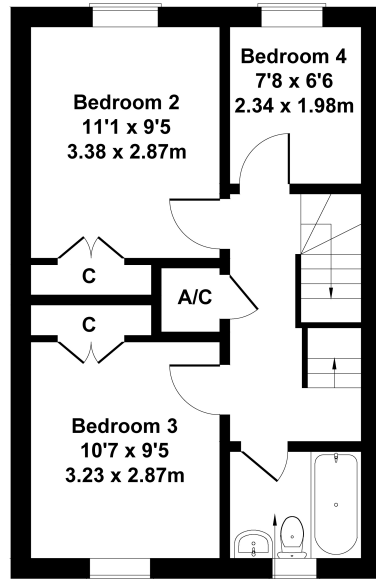
37 Owlswood

Approximate Gross Internal Area
1173 sq ft - 109 sq m

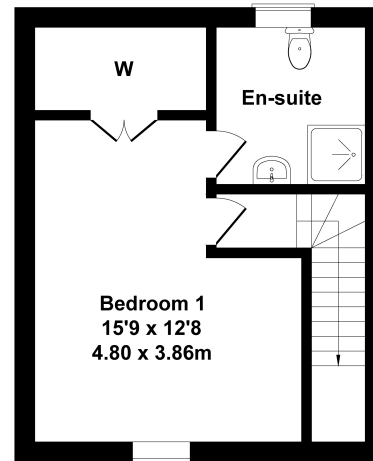
- WELL PRESENTED TOWNHOUSE
- FOUR GOOD SIZE BEDROOMS
- LOUNGE WITH FRENCH DOORS TO GARDEN
- KITCHEN/BREAKFAST ROOM
- MASTER BEDROOM & EN-SUITE
- LOW MAINTENANCE REAR GARDEN
- GARAGE
- OFF ROAD PARKING
- SOUGHT AFTER LOCATION
- QUIET CUL DE SAC



GROUND FLOOR



FIRST FLOOR



SECOND FLOOR

Not to Scale. Produced by The Plan Portal 2022
For Illustrative Purposes Only.

