

FOR SALE

St Albans Avenue,
Chiswick, W4

Terraced House
Chiswick

£1,600,000 fh

4  2  2 



**horton
and garton**

SALES / LETTINGS / PROPERTY MANAGEMENT

hortonandgarton.co.uk | Sales 020 3989 6464 | Lettings 020 3989 5454
161 Chiswick High Road, London, W4 2DT



FOR SALE

St Albans Avenue,
Chiswick, W4

Terraced House
Chiswick

£1,600,000 fh

4  2  2 



**horton
andgarton**

SALES / LETTINGS / PROPERTY MANAGEMENT

hortonandgarton.co.uk | Sales 020 3989 6464 | Lettings 020 3989 5454
161 Chiswick High Road, London, W4 2DT



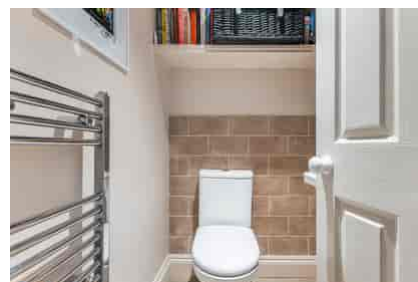
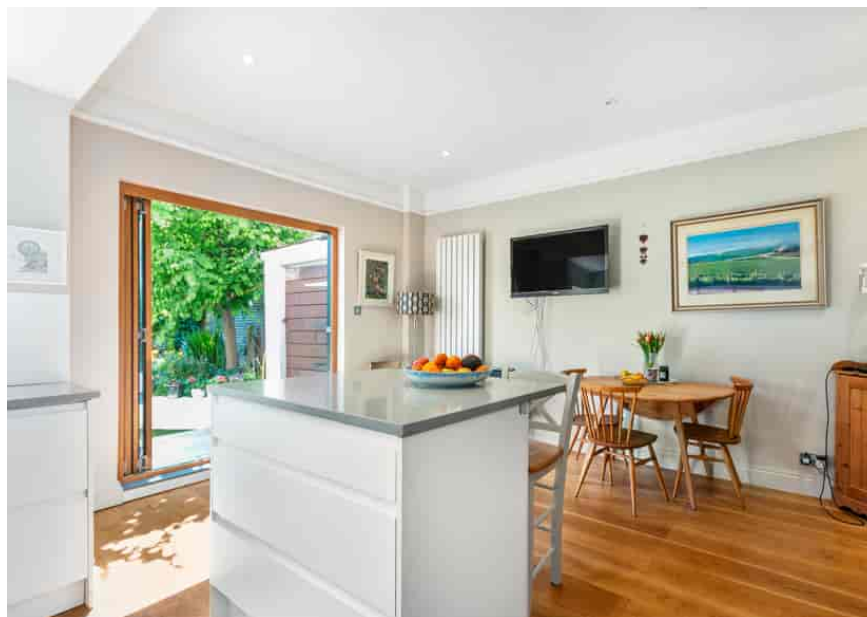
FOR SALE

St Albans Avenue,
Chiswick, W4

Terraced House
Chiswick

£1,600,000 fh

4  2  2 

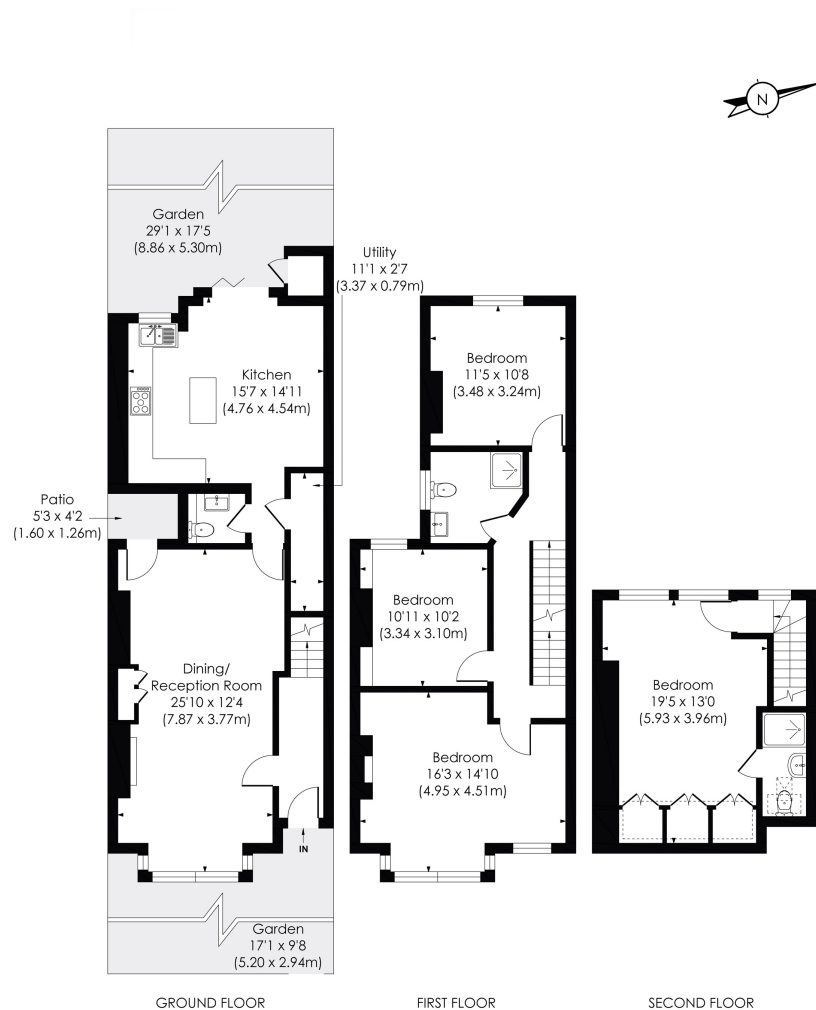


**horton
andgarton**

SALES / LETTINGS / PROPERTY MANAGEMENT

hortonandgarton.co.uk | Sales 020 3989 6464 | Lettings 020 3989 5454
161 Chiswick High Road, London, W4 2DT





ST ALBANS AVENUE, W4

Approx. Gross Internal Floor Area
1544 Sq'/143.35 SqM (Including RHH)

**horton
andgarton**

© Pixangle Property Marketing Ltd. info@pixangle.com Tel: 0208 870 2118

This floor plan has been prepared for the purpose of illustration only in accordance with the latest RICS code of measuring practice and is not to scale. All measurements and areas are approximate and whilst every effort has been made to ensure the accuracy of the plan contained here, no responsibility is taken for any error, omission or misstatement.



Mid terrace family house | Four bedrooms - Two
 bathrooms | 1554 Sq' – 143.55 SqM | 29' garden | EPC
 rating TBC | Bedford Park borders



hortonandgarton.co.uk

Sales 020 3989 6464

Lettings 020 3989 5454

161 Chiswick High Road, London, W4 2DT