



Jeddou Road, London, W12 9EQ

Cow & Co
LONDON



GUIDE PRICE OF £600,000-700,000. Beautifully presented, this stunning two bedroom ground floor apartment offers contemporary living space with a sunny south facing private garden along with excellent fixtures and fittings.

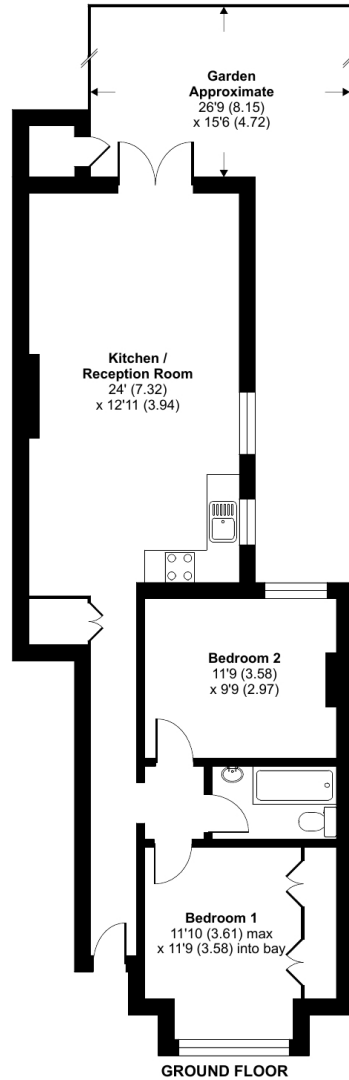


- Beautiful two double bedroom apartment
- Walking distance to Askew Village
- Fantastic private south-facing garden
- Generous rooms with good ceiling height
- Large sash windows and lots of natural light
- Close to local transport links
- Wendell Park area

Jeddo Road , London, W12

Approximate Area = 719 sq ft / 66.7 sq m

For identification only - Not to scale



Floor plan produced in accordance with RICS Property Measurement Standards incorporating International Property Measurement Standards (IPMS2 Residential). © nchecon 2022. Produced for Cow & Co Properties Ltd. REF: 915390

Tel: 0208 065 0010
Email: thehub@cowandco-london.com
Web: cowandco-london.com

Agents note: All measurements are approximate and whilst every attempt has been made to ensure accuracy they are for general guidance only and must not be relied on. The fixture and fittings referred to have not been tested and therefore no guarantee can be given that they are in working order. Internal photographs are reproduced for general information and it must not be inferred that any item shown is included with the property.

Cow & Co
LONDON