



**17 Perch Mews, Biddenham, Bedford,
MK40 4UT**

**Shared Ownership £192,500
Leasehold**

- Shared Ownership
- Three Bedrooms
- Downstairs Cloackroom
- Private Driveway
- Modern Condition Throughout
- South West Facing Garden
- Full Market Value - £350,000
- Semi-Detached Home
- Close To Local Amenities





Elevation estate agents are delighted to offer for sale this spacious three bedroom shared ownership property. In brief the living accommodation downstairs comprises of, a welcoming entrance hall, kitchen to the front which the current owner has included a eye level oven. Walking into your large lounge/diner which offers plenty of natural light with your rear door leading to your private garden. Downstairs is finished off with under stairs storage and a spacious downstairs cloakroom.

Heading upstairs, you have your master bedroom which is a fantastic size and runs the width of the property, bedroom two is also a generous size double bedroom with bedroom three being a large single bedroom with ample space for bedroom furniture. Completing the upstairs you have a modern three piece family bathroom with shower over bath and a large storage cupboard located of your spacious landing.

Full Market Value: £350,000

55% Share: £192,500

Rent on Remaining 45% share: £367.99 PCM Approx.

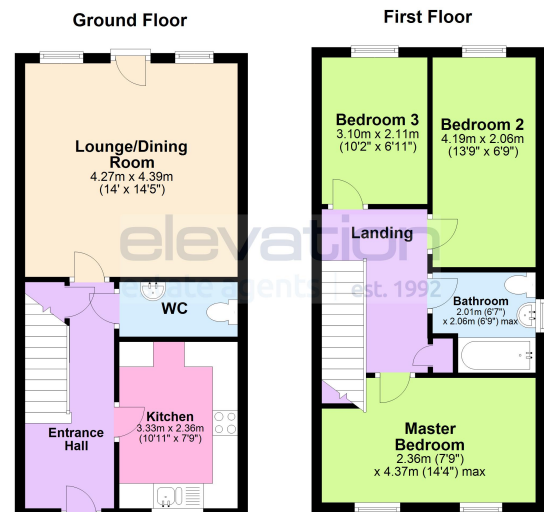
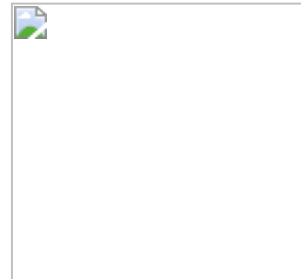
Service Charge: TBC

Outside you have a private driveway which can comfortably fit two cars on as well as your private south west facing garden. The current owner has also extended the patio area giving you plenty of space to entertain family & friends.

Please Call Elevation Estate Agents to book your viewing today!

Disclaimer

Whilst we have endeavoured to prepare our sales particulars accurately none of the services, appliances or equipment have been tested. A buyer should satisfy themselves on such matters prior to purchase. Any measurements or distances mentioned in these particulars are for guide reference only. If such particulars are fundamental to a purchase, buyers should rely on their own enquiries. All enquiries should be directed to Elevation Estate Agents in the first instance.



This floor plan along with the dimensions are for guidance only and should not be used for carpet sizes, appliances or items of furniture.
Plan produced using PlanUp.