



Coach House Mews, North Bridge Street, Shefford SG17 5DH





2 Bedroom Maisonette

Guide Price £240,000 Leasehold

Fabulous two-bedroom first floor Masionette in the heart of Shefford within walking distance to local amenities. Perfect first time buy or a great investment opportunity.

- Two Bedroom Masionette
- Allocated parking
- Close to Shefford town centre
- Open plan lounge/dining area
- Perfect first time buy
- Low maintenance
- Nice walks close by
- Good investment for BTL buyers
- Viewing recommended
- EPC rating C. Council tax band B

First Floor

Kitchen:

Abt. 11' 4" x 5' 9" (3.45m x 1.75m) Lino flooring with fitted worktop, integrated oven and hob with extractor fan. Stainless steel sink and plumbing for washing machine.

Lounge/Diner:

Abt. 14' 4" x 11' 4" (4.37m x 3.45m) Dual aspect, laid to carpet with large radiator under windows. Roller blinds fitted.

Principal Bedroom:

Abt. 14' 7" x 8' 2" (4.45m x 2.49m) Carpeted throughout, dual aspect with fitted roller blinds. Space for multiple free-standing units.

Bedroom Two:

Abt. 11' 4" x 6' 5" (3.45m x 1.96m) Carpeted, radiator, roller blind fitted. Two fitted cupboard storage units(one houses the boiler currently)

Family Bathroom:

Fitted bathtub with splashback tiled feature wall and mounted shower, low level flush WC. Wash hand basin.

Outside

Front Garden:

Paved communal driveway with one allocated space.

Agents Note:

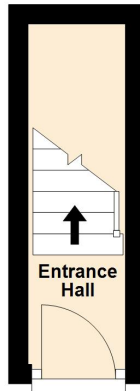
Draft particulars yet to be approved by vendor and may be subject to change.



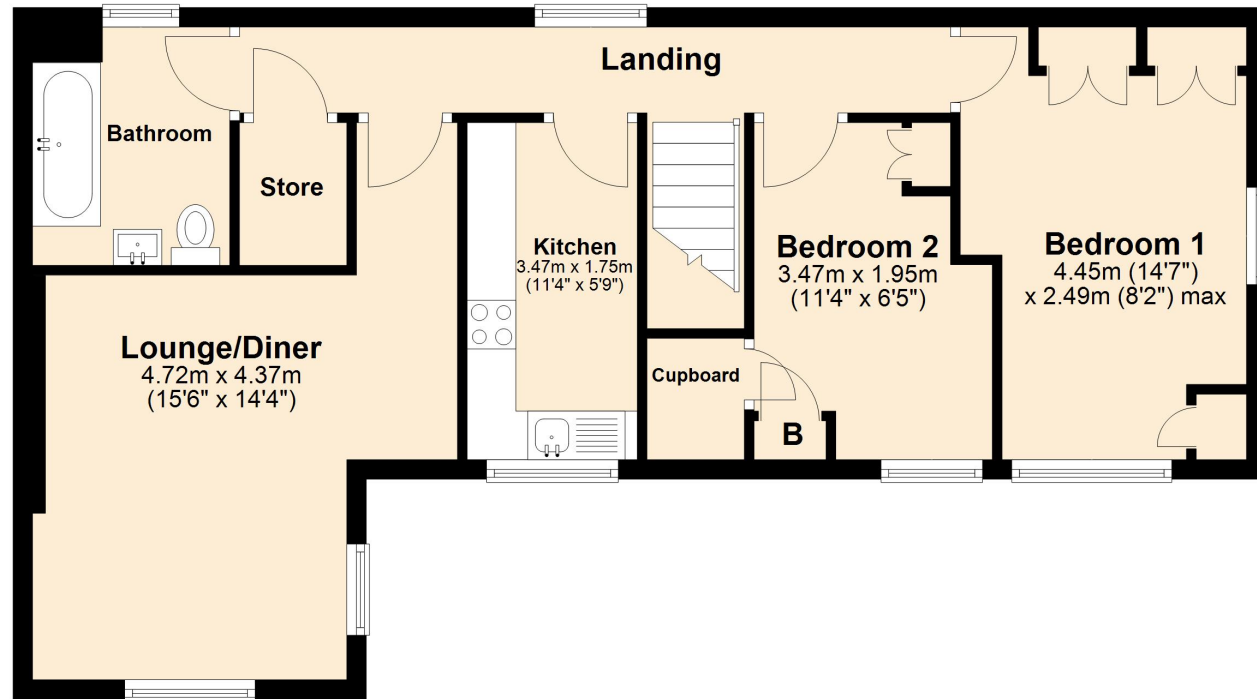
These particulars are a guide only and do not constitute an offer or a contract. The floor plan is for identification purposes only and not to scale. All measurements are approximate and should not be relied upon if ordering furniture, white goods and flooring etc. We have presented the property as we feel fairly describes it but before arranging a viewing or deciding to buy, should there be anything specific you would like to know about the property please enquire. Satchells have not tested any of the appliances or carried out any form of survey and advise you to carry out your own investigations on the state, condition, structure, services, title, tenure, and council tax band of the property. Some images may have been enhanced and the contents shown may not be included in the sale. Satchells routinely refer to 3rd party services for which we receive an income from their fee. If you would like us to refer you to one of these services please ask one of our staff who will pass your details on. We advise you check the availability of the property on the day of your viewing.



Ground Floor



First Floor



For illustration purposes only - NOT TO SCALE - Measurements shown are approximate. The size and position of doors, windows, appliances and other features are approximate.
Plan produced using PlanUp.