



34 Stuart Road

Highcliffe, BH23 5JS



SPENCERS





*Situated on the highly sought-after Stuart Road, this impressive and beautifully presented residence offers a rare fusion of period charm and striking contemporary design. Perfectly positioned just moments from Highcliffe's award-winning beaches and vibrant village centre, the property provides generous and versatile family accommodation. This is further enhanced by a self-contained two-bedroom annexe - ideal for multi-generational living.*

## The Property

The property is entered via a charming reception hallway featuring attractive floorboards that continue throughout the ground floor, creating a warm and cohesive feel. The hallway provides access to all principal accommodation, including understairs storage and a separate cloakroom.

To the rear of the property is an exceptionally well-proportioned living/dining room, offering ample space for both relaxation and entertaining. This superb room is enhanced by wall-to-wall sliding doors that open directly onto the south-facing patio, flooding the space with natural light. A striking focal point is provided by a designer Italian-style wood burner, complete with a glass display and vibrant high-gloss enamel finish.

Adjacent is an open-plan kitchen/breakfast room, fitted with a comprehensive range of floor and drawer units, complemented by stylish wooden work surfaces. There is space for a Rangemaster-style cooker with extractor above, along with a feature tiled splashback.

Leading from the kitchen is a separate utility room, offering additional storage, housing the Megaflow water cylinder, and providing space and plumbing for further white goods.

**OIEO £1,250,000**



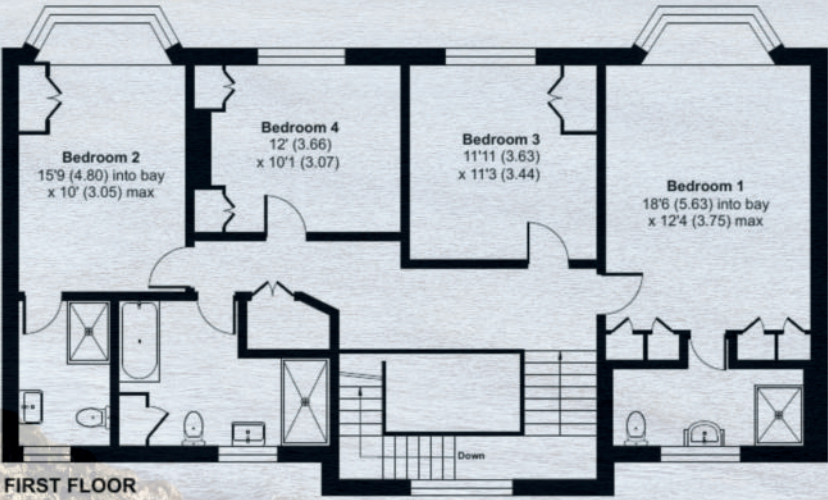
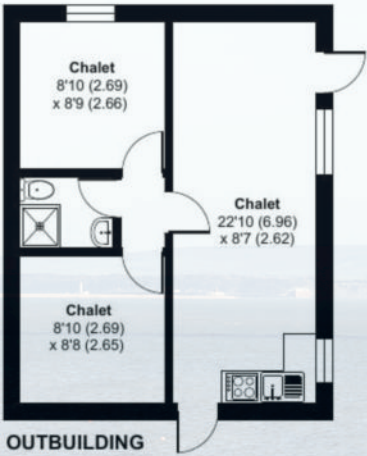
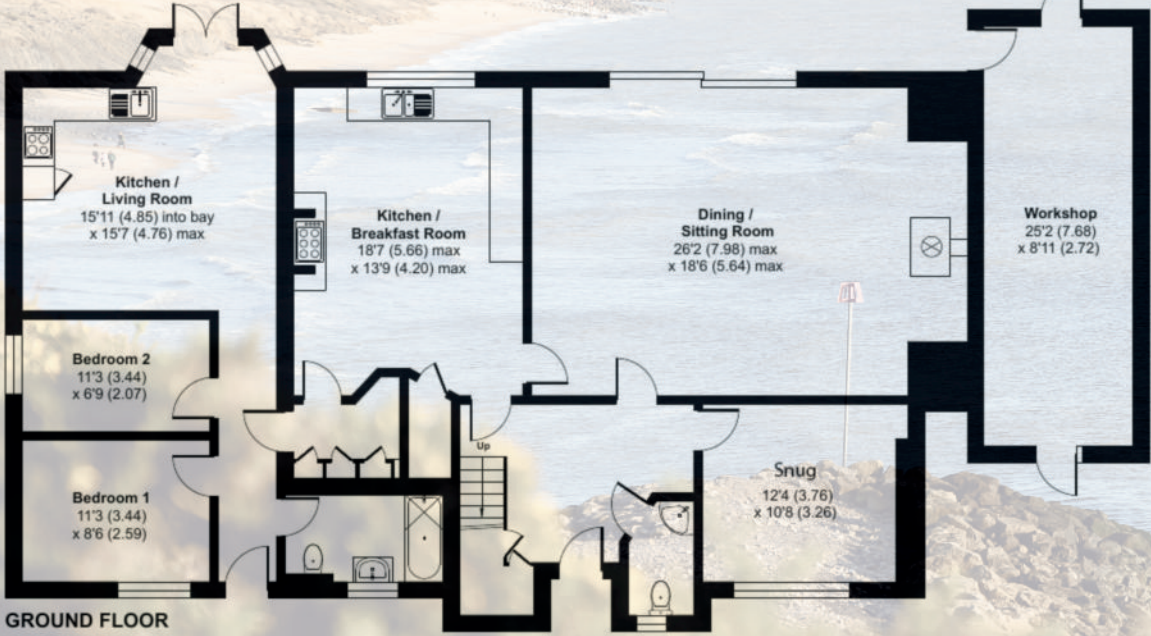
Approximate Area = 2260 sq ft / 209.9 sq m

Annexe = 524 sq ft / 48.6 sq m

Outbuildings = 632 sq ft / 58.7 sq m

Total = 3416 sq ft / 317.2 sq m

For identification only - Not to scale





*Set within private, south-facing gardens, the home also benefits from a versatile garden chalet and a sweeping carriage-style “in and out” driveway, providing extensive off-road parking.*

---

### The Property Continued...

Additional ground floor accommodation includes a well-proportioned snug, enjoying an outlook over the front driveway - ideal as a secondary reception room or home office.

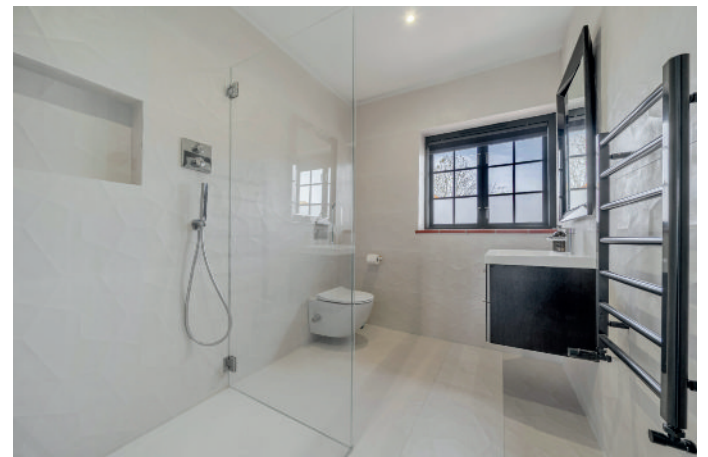
From the hallway, an attractive turned staircase rises to a spacious galleried landing, featuring classic panelled balustrades and Crittall-style leaded windows, which bathe the space in natural light.

The first floor offers four generous double bedrooms, all providing ample space for furniture and storage. Two of the bedrooms benefit from en-suite shower rooms, while the remaining rooms are served by a contemporary family bathroom, featuring a sleek tiled bath with a frameless glass screen and rainfall shower, complemented by a floating dark wood vanity unit and ceramic basin. All bathrooms benefit from rainfall showers plus handheld shower attachments.

A true highlight of the home is the light-filled principal suite, boasting a charming bay window with views over the garden. This elegant space is enhanced by heritage-inspired décor, picture rails, and ample room for a bespoke dressing area, along with built-in storage. The high-specification en-suite features a large walk-in rainfall shower, basin and wc.









## The Annexe

The self-contained annexe has been thoughtfully designed and modernised, offering excellent potential for additional income or independent living. It can be accessed either via the main house (through the utility room) or its own private front entrance.

The accommodation comprises two double bedrooms, a family bathroom, and an open-plan kitchen/dining/living area with French doors opening onto the rear patio.





## Grounds & Gardens

Externally, the property is approached via a sweeping gravel carriage driveway, providing extensive off-road parking and set behind a traditional brick wall with mature hedging. There is also access to a garage store.

The property sits within beautifully maintained, private south-facing gardens, featuring a large level lawn and a Mediterranean-inspired terrace with mature palm planting. Designed for outdoor entertaining, the grounds include a sheltered flagstone patio and a dedicated hot tub area, all enjoying a secluded and sun-drenched aspect.

## Additional Information

Tenure: Freehold

Council Tax Band: F

Energy Performance Rating: C Current: 74 Potential: 77

All mains services connected

Heating: Gas central heating

Flood Risk: Very low

Broadband: FTTP - Fibre to the property directly

Ultrafast broadband with speeds of up to 1000 Mbps is available at the property ((Ofcom).

Mobile Signal/Coverage: No known issues, please check with your provider for further clarity.





## The Local Area

Highcliffe on Sea (or simply Highcliffe) sits on a high bluff above a beautiful stretch of sand and shingle beach. This small leafy coastal town, straddling the Dorset/Hampshire border, is best known for Highcliffe Castle, an ornate early Victorian mansion, once home to Mr Selfridge and now an events venue. Its grounds enjoy outstanding views across Christchurch Bay towards the Isle of Wight while footpaths head off to a wooded nature reserve or zig-zag down to the beach.

Highcliffe is ideal for those searching for a relaxed yet smart seaside lifestyle. A high street of useful independent shops includes a bakery, family butcher and gourmet grocery. Highcliffe also nurtures a foodie reputation with an annual food festival and tasty selection of cafes, gastropubs and restaurants.

Leisure facilities include Highcliffe Castle Golf Club while the New Forest lies just to the north.

As Highcliffe developed post-war property is mostly mid-century character houses, coastal chalets and high-specification new builds. For families, schools are rated 'good' while local independents, including Durlston Court and Ballard, are judged 'excellent'. Mainline railway stations are found nearby at Hinton Admiral and New Milton with services to London Waterloo in two hours.

## Important Information

Spencers Property would like to point out that all measurements set out in these particulars are approximate and are for guidance only. We have not tested any apparatus, equipment, systems or services etc and cannot confirm that they are in full efficient working order or fit for purpose. No assumption should be made as to compliance with planning consents or current usage. Nothing in these particulars is intended to indicate that any carpets or curtains, furnishings or fittings, electrical goods (whether wired or not), gas fires or light fittings, or any other fixtures not expressly included form any part of the property being offered for sale. Whilst we endeavour to make our sales particulars accurate and reliable, if there is any point which is of particular importance to you, please contact us and we will be happy to confirm the position to you.



For more information or to arrange a viewing please contact us:

A: 368-370 Lymington Road, Highcliffe, BH23 5EZ

T: 01425 205 000 E: [highcliffe@spencersproperty.co.uk](mailto:highcliffe@spencersproperty.co.uk)

[www.spencersproperty.co.uk](http://www.spencersproperty.co.uk)