



32, Riverbank, Laleham Road, Staines-upon-Thames, Surrey. TW18 2QE.
2 Bedroom Apartment - £320,000 Leasehold

32, Riverbank, Laleham Road, Staines-upon-Thames, Surrey. TW18 2QE.

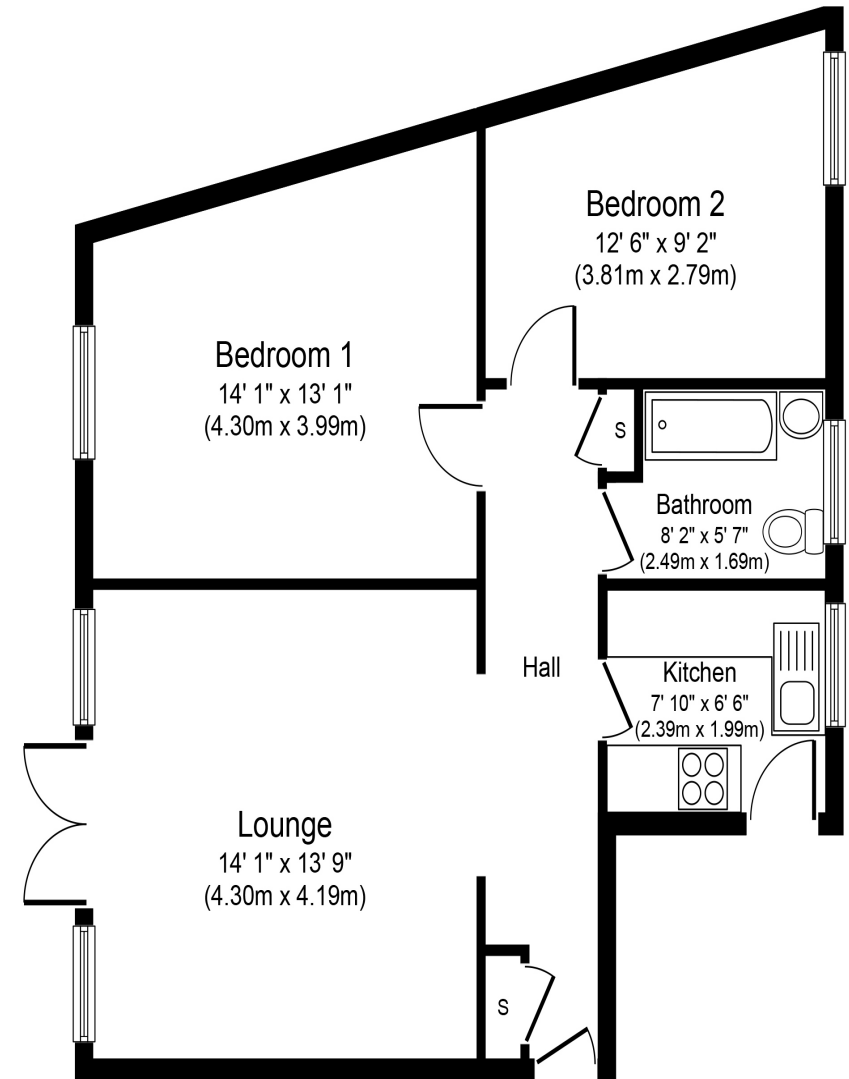
01784 451458

2 Bedroom Apartment - £320,000 Leasehold

VERY WELL PRESENTED & SPACIOUS TWO BEDROOM APARTMENT SITUATED IN THIS MUCH SOUGHT AFTER RIVERSIDE MANSION BLOCK IDEALLY LOCATED FOR TOWN CENTRE, MAINLINE TRAIN STATION & RIVER THAMES. The property benefits from a spacious lounge/diner with French doors to patio enjoying views over the well-kept communal grounds, separate fitted kitchen, two double bedrooms, modern white bathroom suite and a long lease. Viewings Highly Recommended!

Key Features

- STUNNING CONDITION
- RIVERSIDE DEVELOPMENT
- LUXURY KITCHEN & BATHROOM
- PRIVATE PATIO AREA
- EXTENSIVE WELL-KEPT COMMUNAL GARDENS
- LONG LEASE
- TWO DOUBLE BEDROOMS



Ground Floor
Approximate Floor Area
649 sq. ft.
(60.3 sq. m.)



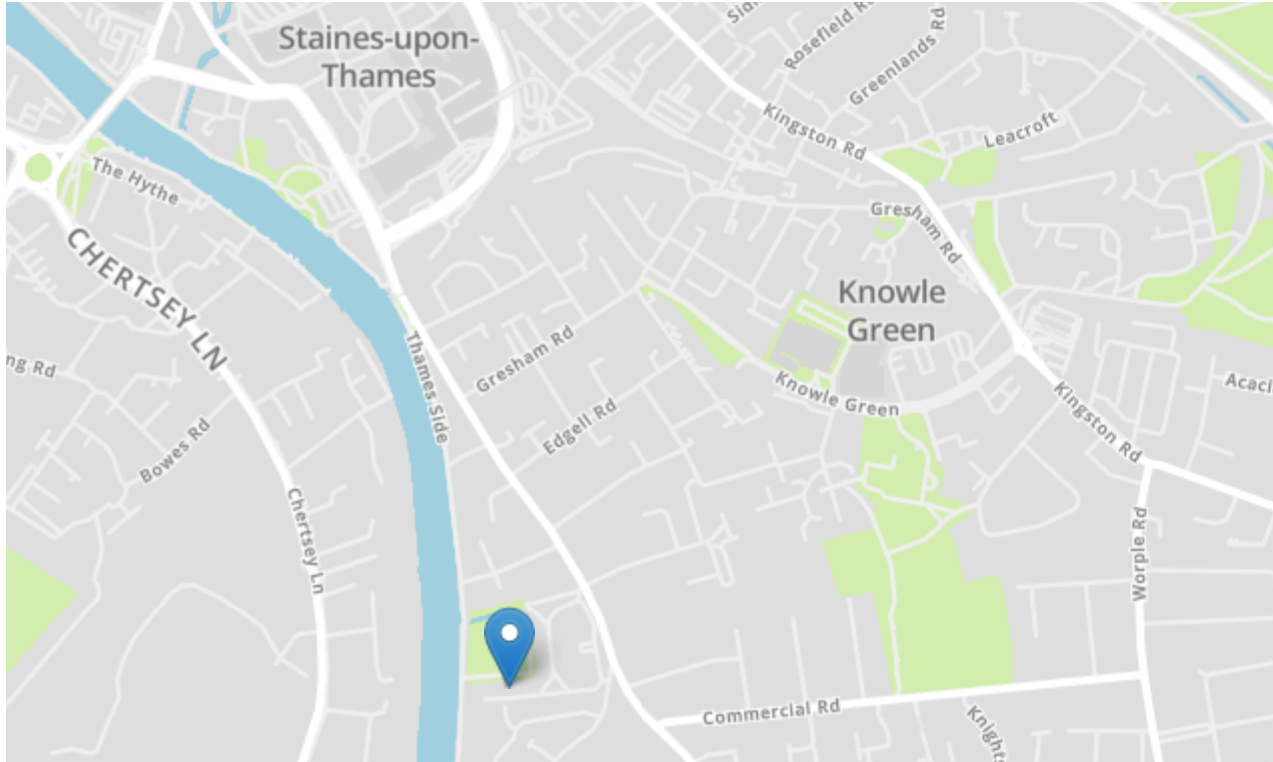
GREGORY BROWN
RESIDENTIAL SALES & LETTINGS





32, Riverbank, Laleham Road, Staines-upon-Thames, Surrey. TW18 2QE.

gregory-brown.co.uk



Tenure	Leasehold
Lease Term	139 Years Remaining
Ground Rent	£10 PA
Service Charge	To Be Confirmed
Local Authority	
Council Tax	

We have prepared these property particulars as a general guide to a broad description of the property. They are not intended to constitute part of an offer or contract. We have not carried out a structural survey and the services, appliances and specific fittings have not been tested. All photographs, measurements, floorplans and distances referred to are given as a guide only and should not be relied upon for the purchase of carpets or any other fixtures or fittings. Lease details, service charges and ground rents (where applicable) and council tax are given as a guide only and should be checked and confirmed by your solicitor prior to exchange of contracts. The copyright of all details, photographs and floorplans remain exclusive to Gregory Brown.

