

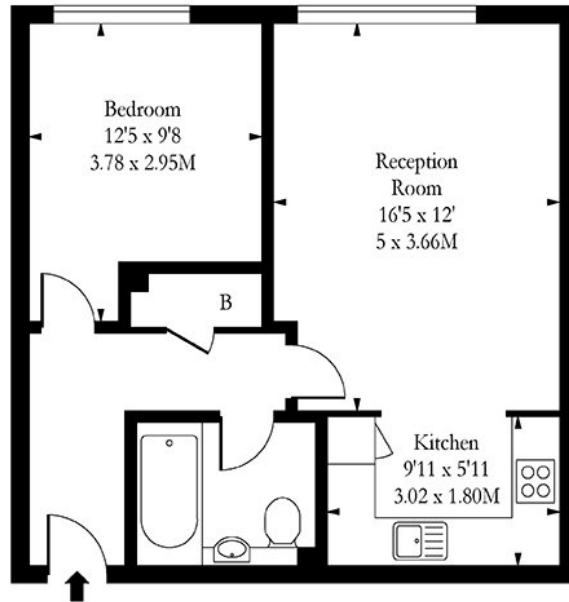
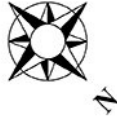


Warneford Court, Mannock Close, London, NW9

£1,625 pcm

- One Bedroom Apartment
- Bright & Airy Throughout
- Off-Street Parking
- Furnished
- Modern Development
- Large Communal Roof Terrace
- Concierge In Building
- Available 28th November 2023

Mannock Close, London, NW9



Sixth Floor

Approx Gross Internal Area 506 Sq Ft - 47.01 Sq M

Measured in accordance with RICS guidelines. Every attempt is made to ensure accuracy
However all measurements are approximate.
The floor plan is illustrative purposes only and is not to scale

www.tomekphotography.co.uk

