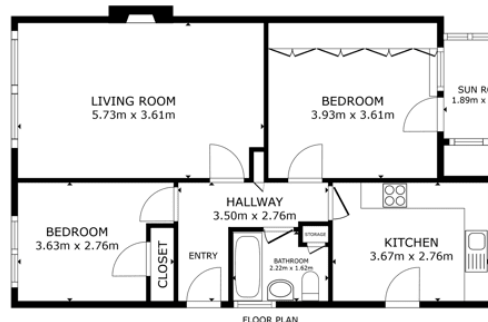


**2 Bedroom(s), Detached Bungalow, Freehold**

**Lindrick Close, Bessacarr, Doncaster.**



- 3D Virtual Tour Available
- Rear Enclosed Garden and a Front Garden
- Kitchen
- Two Bedroom Detached Bungalow In A Sought After Location
- Family Bathroom

- No Chain
- Garage and Spacious Driveway
- Lounge Diner
- Sun Room
- Local Amenities and Transport Links

**£215,000**  
**For Sale**

*Book your viewing today* Tel: 01302 247754

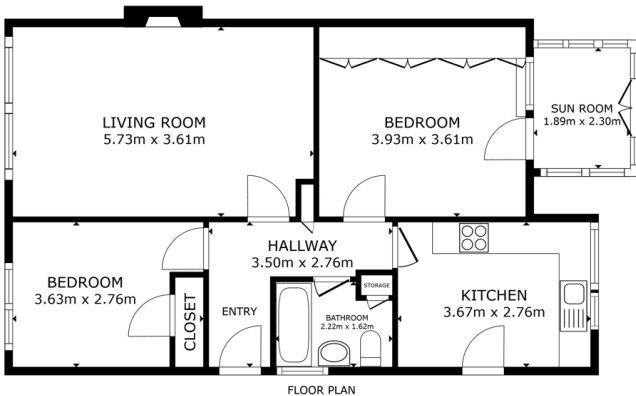


## Owner's View

Situated on the peaceful and sought-after Lindrick Close in Bessacarr, this well-presented 2-bedroom detached bungalow offers comfortable single-storey living with a fantastic layout and generous outdoor space. The property features a welcoming lounge diner, a well-equipped kitchen, and a bright sun room that overlooks the rear garden — perfect for relaxing or entertaining guests. Two bedrooms offer comfortable accommodation, ideal for a couple, small family, or those looking to downsize. Externally, the bungalow boasts a private driveway and a detached garage, providing ample off-street parking and storage. The front garden adds curb appeal, while the enclosed rear garden offers a secure and tranquil outdoor space. Located in a highly regarded residential area, with excellent local amenities, transport links, and green spaces nearby, this property is a must-see for anyone seeking a peaceful yet convenient lifestyle.

## Internals

### Floor Plan



GROSS INTERNAL AREA  
FLOOR PLAN 71.2 sqm  
TOTAL: 71.2 sqm  
SIZES AND DIMENSIONS ARE APPROXIMATE, ACTUAL MAY VARY.

Matterport



### Lounge Diner



### Sun Room



### Kitchen





## Master Bedroom



## Bedroom



## Family Bathroom



## Externals

### Front Garden



### Rear Garden



## Property Information

Council Tax Band - C

Utilities - Mains Gas, Mains Electricity, Mains Water

Water Meter - Yes

Tenure - Freehold

Solar Panels - No



Space Heating System - Gas Boiler with radiators

Approximate Heating System Installation Date -

Water Heating System - Gas boiler (Combi)

Approximate Water Heating Installation Date -

Boiler Location -

Approximate Electrical System Installation Date -

Permanent Loft Ladder - No

Loft Insulation - Yes

Loft Boarded out – No

Whilst every effort is made to ensure that the information contained in these particulars is reliable, they do not constitute or form part of an offer or any contract. The Property Hive accept no liability for the accuracy of the contents, and therefore they should be independently verified by prospective buyers or tenants before agreeing an offer. All measurements provided are approximate and should be verified before exchange of contracts. No appliances, fixtures or fittings have been tested and should be checked by the buyer before exchange of contracts to ensure they are in good working order.



## Energy Performance Certificate

